

3006100056

**HP-15TF**

Hornspeaker 15W



IP66



IP67

## Description

- ✓ Horn Loudspeaker for open deck and machinery spaces.
- ✓ Excellent for P.A. / Intercom
- ✓ With transformer for 100V amplifier line
- ✓ 2x M20 cable gland and fuse

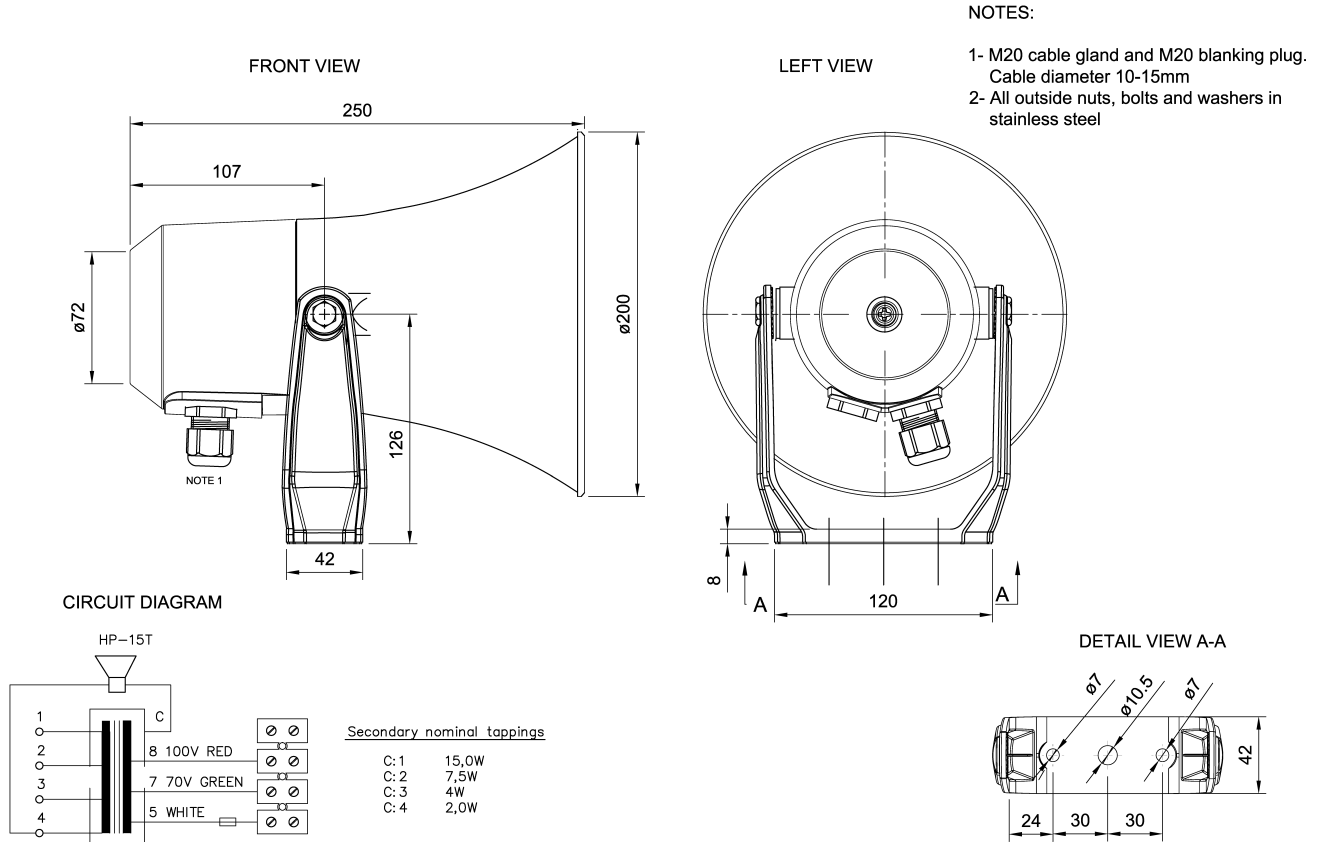
To install the loudspeaker:

- ✓ Fasten loudspeaker to wall/ceiling with two screws through foot bracket.
- ✓ Remove lid by 1 screw, lead cable trough cable gland, select required tapping and connect to terminal

- ✔ To change the position of the loudspeaker please adjust the bracket (by loosening / tightening the screws) as required.

For optimum performance, always use the correct voltage / power and operate within the frequency limits as stated. Do not open loudspeaker when energized.

## Technical Dimensions



# Specifications

## GENERAL

Material / Colour	ASA / RAL 7035
Dimensions	Ø 200 x 250D
Mounting	Bracket
Termination	Inside screw connections
Weight	1,7 kg
Max. / min. amb. temp	90°C / -50°C
Rated / Max power	15W / 20W
SPL 1W / 1 m	108 dB
SPL rated power	118 dB
Effective freq. range	330-8000 Hz
Dispersion (-6dB) 1kHz / 4kHz	130° / 35°
Directivity factor, Q	8,3
Ingress protection	IP66/67
Environmental Condition	Exposed