

2990000041

## PROMAX-120-24

Power supply 100-240VAC/24VDC 5A



---

---

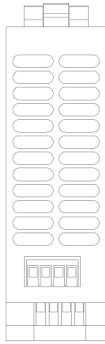
## Description

Switch-mode AC to DC power supply for 5A @ 24Vdc equipment.

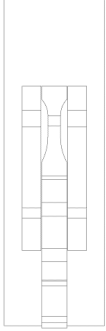
- ✓ 22.5 to 29.5 V DC (adjustable via potentiometer at front)
- ✓ Overload protected
- ✓ Short-circuit protected
- ✓ DIN mounting
- ✓ DNV-GL approved

## Technical Dimensions

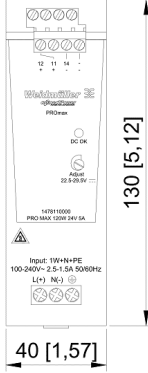
TOP VIEW



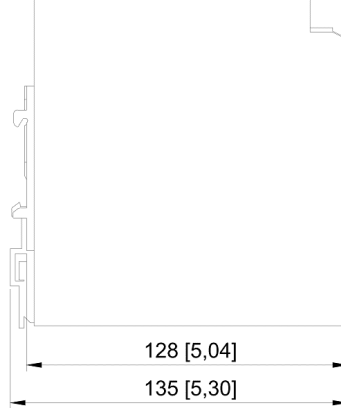
REAR VIEW



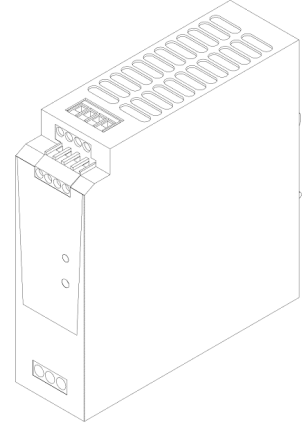
FRONT VIEW



SIDE VIEW



ISO VIEW



# Specifications

## GENERAL

Dimensions	40 x 130 x 125 mm / 1.575 x 5.118 x 4.921 inches
Net weight	859 g
IP grade	IP20
Connection type	Screw terminals
Operating temperature	-25 °C...70 °C
Environmental Condition	Protected

## INPUT

Rated input voltage	100..240 V AC
Frequency range	45...65 Hz
Current consumption	1A @ 230 VAC / 2,5A @ 115 VAC
Inrush current	max. 15 A
Input fuse (internal)	Yes
Recommended external fuse	Minimum 6A C-type

## OUTPUT

Output power	120 W
Output voltage	22.5...29.5 V (adjustable via potentiometer)
Output current (nominal @ 24V)	5 A @ 60 °C
Protection against inverse voltage	Yes

## PRODUCT VARIANTS

---

2990000042      Power supply 100-  
240VAC/24VDC 7,5A  
DNV-GL

---

2990000043      Power supply 100-  
240VAC/24VDC 10A  
DNV-GL

---

2990000044      Power supply 100-  
240VAC/24VDC 20A  
DNV-GL

---

2990000046      Power supply 100-  
240VAC/48VDC 5A  
DNV-GL

---