



2810050030

BC-13-240

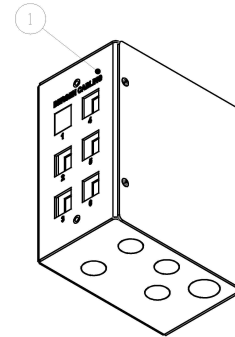
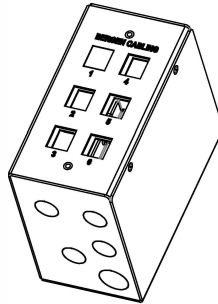
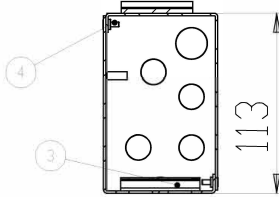
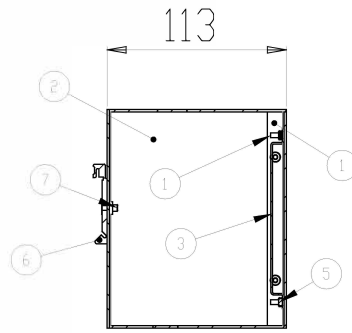
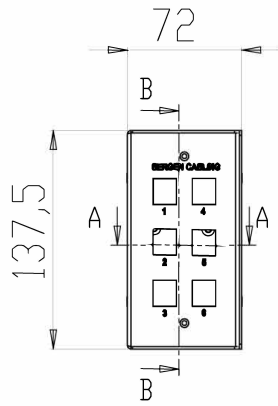
Bergen Cabling Patch Panel 6 port DIN-Rail mount - Empty

Description

Compact Modular DIN-Rail patch panel in Stainless 316 steel . Can be filled with 6 LC duplex adaptors for a 12 fiber solution, or a mix of copper and fiber.

Technical Dimensions

This drawing is the property of Stansfabrikken Produktions AS. It is intended for internal use only. It is not to be reproduced, stored in a retrieval system, or transmitted in any form or by any means, electronic, mechanical, photocopying, recording, or by any information storage and retrieval system, without the prior written permission of Stansfabrikken Produktions AS.



ITEM NO.	PART NUMBER	DESCRIPTION	QTY.
1	assy sff51627		1
2	assy sff51628		1
3	sff51629	PATCH PANEL MOUNTING PLATE	1
4	200668	SCREW M3X10 DIN965 A2 TORX	4
5	002-04-0019	NUT M3 DIN934 A2	2
6	001-16-0006	VT124 / DIN RAIL HOLDER	1
7	002-01-0231	SCREW M4X10 DIN7991 A2 TORX	2
8	connector	-	1

SUPPLIER	Material	Sheet thickness	Weight
Project	Tolerance		Units
	NS-ISO 2768-1,M		mm, g
Department	Designer	Designer	Scale
J/P/P			A3
Page	Description	Document status	Format
	PATCH PANEL	RELEASED	
		Drawing no	
		SFF51630	
		Revno	Date
		1	2019-08-26
		Sheet/Sheets	
		1/1	

File: \\pabrik\CUSTOMERS\SRP\100k\project\00k\panel\41153638

DK-system SolidWorks 2007

Specifications

Operating temperature: 0°C - 70°C
Storage/transport temperature: -40°C - 80°C
Relative humidity (non-condensing): 10% - 95%

MECHANICAL CONSTRUCTION

Dimensions (HxDxW)	138 x 113 x 74 mm
Mounting Options	Rear DIN-Rail
Weight	0.8 kg
Protection class	IP20

Accessories



BC-11-006

BC-11-006 Connector RJ45
Cat6A STP v2



BC-12-284

Adapter Keystone LC Duplex

BC-12-289

Adapter Keystone blanking plug



BC-14-201

Bergen Cabling - Keystone
Termination Tool for BC-11-004
and BC-11-006