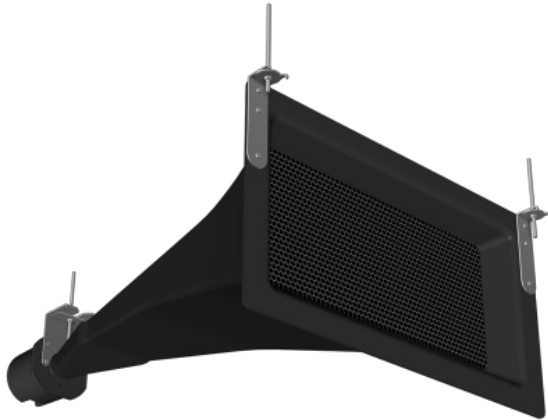


2131000700

TT-1020

Tunnel Horn Loudspeaker



- ✓ Tunnel horn loudspeaker ideal for road and long projection applications
- ✓ Intelligibility at very high output levels
- ✓ Consistent controlled directivity and low distortion
- ✓ High efficiency and high power capacity
- ✓ Highly resistant to harsh environments

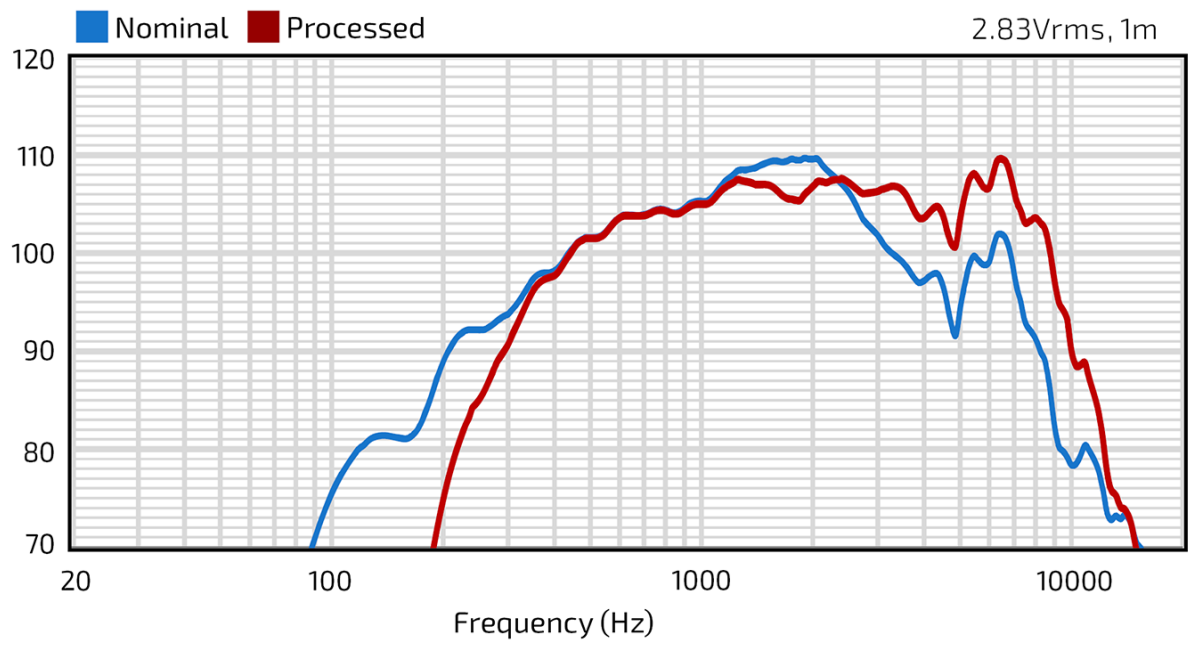
Description

The TT-1020 tunnel horn loudspeaker is designed to provide consistent intelligible emergency notification for enclosed linear spaces and other long projection applications. Precise pattern control and very narrow coverage angles deliver outstanding performance in highly reverberant environments such as road tunnels.

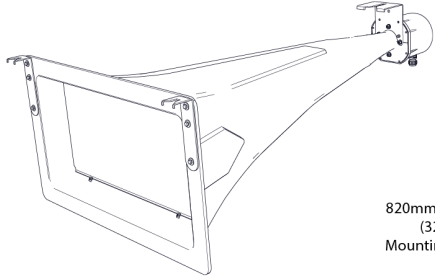
To meet the performance goals for long projection emergency notification, the system utilizes a single high power purpose-built MF transducer, ensuring accurate signal reproduction and very low distortion. Our proprietary 2" (51 mm) exit compression driver delivers high intelligibility at elevated sound pressure levels necessary to overcome the high ambient noise and reflected acoustic conditions. This makes the TT-1020 tunnel horn loudspeaker ideal for road or rolling stock tunnels and similar acoustically challenging environments. The large-format waveguide ensures precision directivity control throughout the entire voice band.

Both the driver's inert materials composition and horn's fiberglass construction make the entire device resistant to potentially caustic tunnel-type environments. All external hardware and mounting brackets are 316 stainless steel.

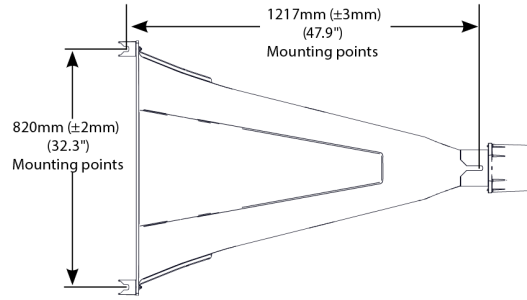
FREQUENCY RESPONSE (dB)



Technical Dimensions



Isometric



Top

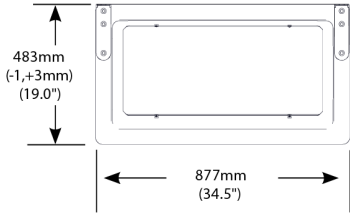
H x W x D
 483 x 877 x 1362 mm
 (19.0" x 34.5" x 53.6")

Unit Weight
 53 lbs (24 kg) loudspeaker and mounting brackets

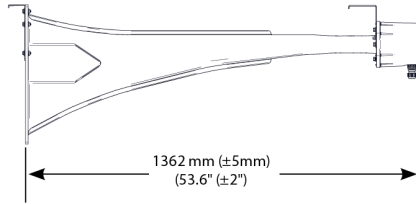
Shipping Weight
 158 lbs (71.7 kg) Shipped in pairs

Enclosure / Finish
 Loudspeaker: Hand-laminated multilayer fiberglass with black gelcoat on exterior surfaces

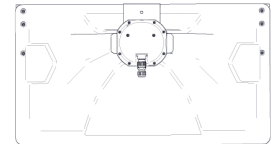
Grille
 Powder-coated perforated 316 stainless steel backed with hydrophobic (treated) acoustic fabric



Front



Sides



Rear

Note: Tunnel horn is shown with the mounting brackets.
 Overall horn width and height may vary slightly due to fiberglass application thickness.

