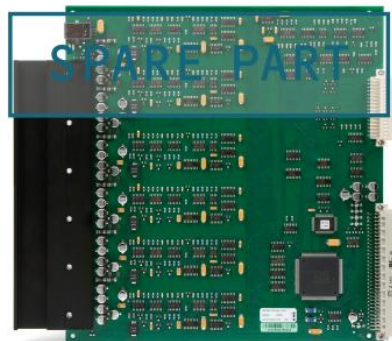


1009101010

ASLT

Subscriber Line Board



- ✓ Can be used with InterGuard, TouchLine and Pamex stations
- ✓ Each board provides 6 subscriber connections
- ✓ 6 remote control outputs (software configurable activation)
- ✓ 1 voice-switched conversation per board
- ✓ When using handset or full duplex conference unit at both ends, the system is non-blocking within each module.
- ✓ All subscriber connections suitable for display stations
- ✓ Line monitoring
- ✓ Software-controlled output volume control
- ✓ Hot plug-in/plug-out
- ✓ Red/green/amber LED indicates system status

Description

This board contains circuitry for 6 subscriber connections and one measurement channel for voice switching control. It plugs into any position 1 - 23.

The board provides 6 remote control outputs that are software-controlled. The line monitoring reports errors on all subscriber lines.

The board can be plugged in/out while the exchange is running. A hot plug-in cable is needed for this purpose. The cable is included in the cable set for the exchange.

A four-wire interface provides compatibility with existing standard station range from Vingtor-Stentofon with the exception of TouchLine display stations produced earlier than March 1995. These stations are no longer compatible due to reduction on the display signal output from the exchange.

TouchLine display stations produced after March 1995 are labeled version 1.1 and are fully compatible with the AlphaCom exchange.

All signals for external equipment is run to a connection board mounted on the connection field of the exchange.

See also: [additional documentation on wiki.zenitel.com](https://wiki.zenitel.com)

Specifications

GENERAL

Order Number	1009101010
Operation Voltage	5, 15, 24, 32 V DC
Dimensions (W x H x D)	10 mm x 230 mm x 263 mm, 0.39" x 8.97" x 10.26" , Double Extended Europe Format
S/N ratio (conversation)	60 dB
Minimum impedance loudspeaker	20 ohm
Input impedance (c-d)	600 ohm
Frequency range: , Conversation , Program distr.	200 - 10,000 Hz, 200 - 15,000 Hz
Crosstalk at 1 kHz	< -80 dB
Capacity for each ASLT board	6 subscribers
Duplex-controlled conversations	1 voice-switched conversation per board
Remote control outputs	5V 2.2 Kohm
Cable type	2-pair twisted cable per station
Max. cable length to station	2 km (0.6mm2 - 22 AWG), 1.4 km (0.5 mm2 - 24 AWG)
Distortion	< 2%
Output power	3-4 W at 20 ohm, 0.6 W at 20 ohm, 1 W at 63 ohm
Indicator	LED (red/green/amber)

ORDER NUMBER	DESCRIPTION	SHIP WEIGHT
1009101010	Subscriber Line Board ASLT	0.5 kg/ .1 lb
Supplementary equipment:		
1009930200	Subscriber Connection Board, Krone terminals (for mounting on distribution field)	0.075 kg/0.2 lb.
1009501011	1.5 m Subscriber Connection Cable with Filter Board (flat cable)	0.2 kg / 0.4 lb.
1009501021	5 m Subscriber Connection Cable with Filter Board (round cable)	0.65 kg / 1.4 lb.
1009501023	10 m Subscriber Connection Cable with Filter Board (round cable)	1.2 kg / 2.6 lb.
100991020	Distribution Field for Subscriber Connection Boards ASLT	