

4000200300

P-6211

Industrial Telephone



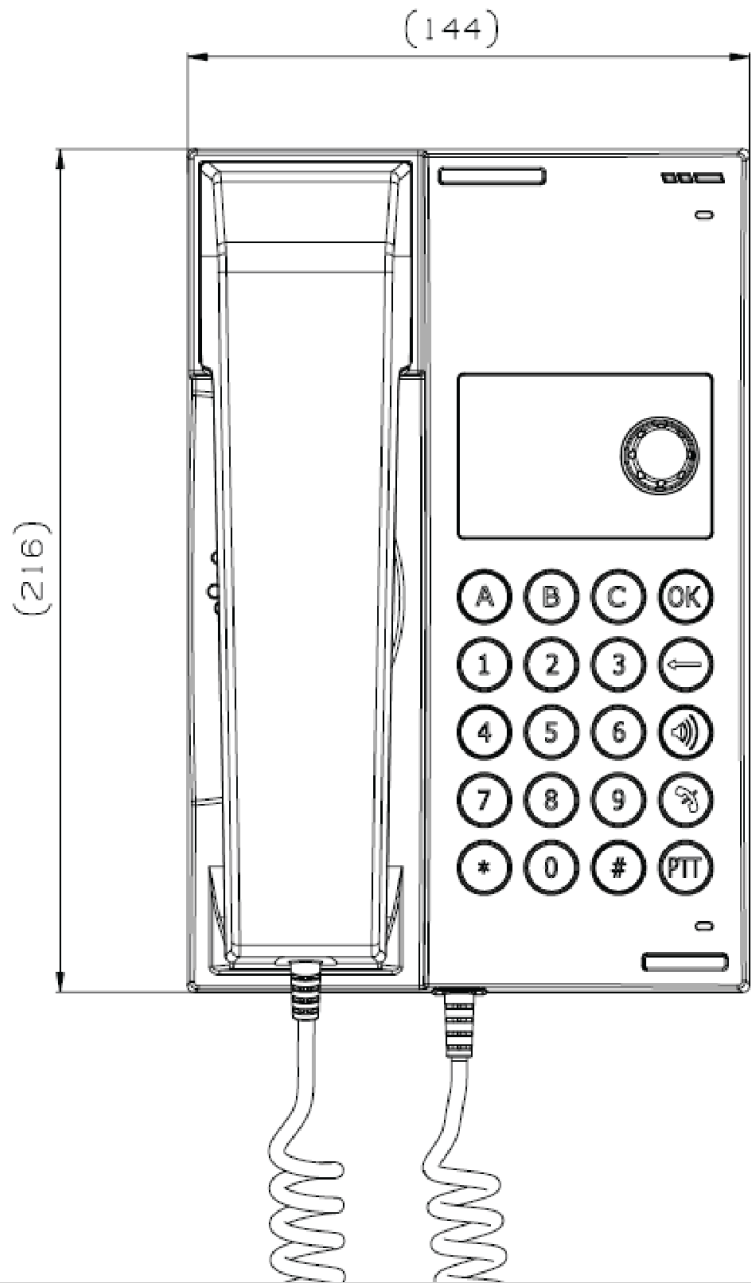
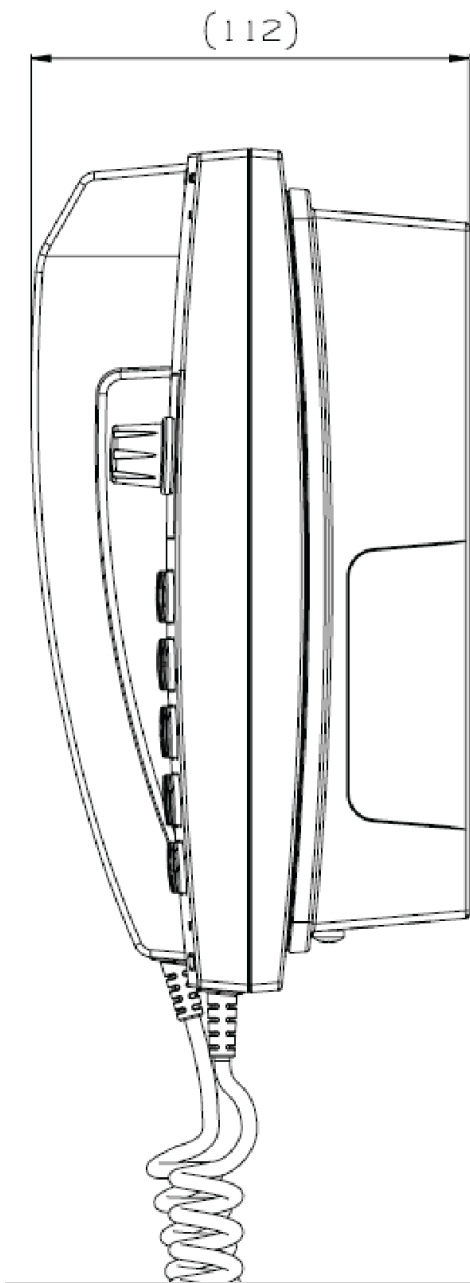
Description

- ✓ Integrated loudspeaker/microphone
- ✓ Handset, 2 meter sturdy curled cord
- ✓ Hands-free, duplex communication
- ✓ 2" Graphic backlit display:
 - ⊙ Menus and navigation wheel/key
 - ⊙ Contact list
 - ⊙ Caller ID
- ✓ Dimmable backlight (keypad)
- ✓ Privacy switch (Do not disturb) with priority override
- ✓ Manual PTT (push-to-talk) key

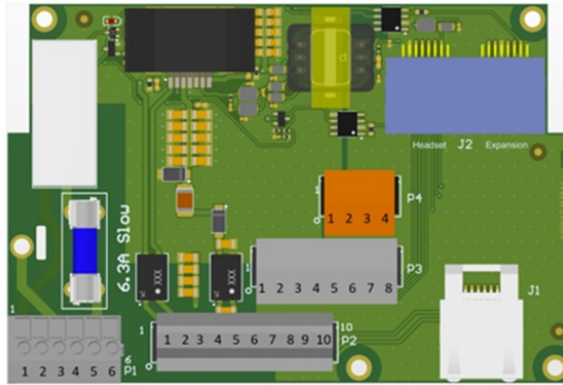
- ✓ 3 pcs programmable direct access keys (A-B-C)
- ✓ Volume adjustment with override
- ✓ Speakerphone SPL level >85dB(A) (integrated loudspeaker)
- ✓ Bulkhead mounted
- ✓ MMI according to IEC 62288 Ed 2.0
- ✓ Status/health indicator
- ✓ Multiple ring melodies
- ✓ Integrated call relay for external signal device
- ✓ Output to external loudspeaker, 8 W; SPL level > 110dB (loudspeaker dependent)
- ✓ Headset connection
- ✓ Complies with IEC 60945 Standard for Marine Equipment
- ✓ DNV/ABS/RMRS/CCS type approval and compatible with NORSOK

The P-6211 is equipped with an amplifier for additional external loudspeaker and relay for external call signal devices (beacon, siren, etc.). The unit is bulkhead mounted.

Technical Dimensions



Terminal board:



P1.1 – External signal device Relay NO
 P1.2/3 – PE (Protective Earth)
 P1.4/6 – Common VIA point
 P1.5 – External signal device Relay Com

P3.1 – Headset Earphone L Ref
 P3.2 – Headset Earphone L
 P3.3 – Headset mic. +
 P3.4 – Headset mic. -
 P3.5 – Headset Earphone R
 P3.6 – Headset Earphone R Ref
 P3.7 – Headset PTT
 P3.8 – Headset PTT Ref

P2.1 – External Loudspeaker +
 P2.2 – Screen
 P2.3 – External Loudspeaker –
 P2.4/5 – +24V DC Power supply (amplifier/relay)
 P2.6/7 – 0V DC Power supply (amplifier/relay)
 P2.8/9 – UpN Line
 P2.10 – Screen

P4.1 – Expansion CAN Hi
 P4.2 – Expansion 3.3V
 P4.3 – Expansion GND
 P4.4 – Expansion CAN Lo

Specifications

MECHANICAL

Dimensions (WxHxD)	144 x 216 x 120 mm
Weight	1.1 kg
Material	Plastic (PC/ASA)
Color	Grey – RAL 7021/7043
Mounting	Bulkhead / Direct or Bracket
Fixing	4 x M4 bolts
Access	Front
Cable Entry	Side / Bottom – through Glands (optional)
Connector Type	Terminals (P2.8/P2.9, screen P2.10)

ELECTRICAL

Power Supply	System / Line feed (Basic telephone operation). Additional 24V/1.5A input for call relay and amplifier for external loudspeaker.
Line Format	UpN (Digital 2Wire – 2B+D)
Power Consumption	10W (max – external loudspeaker)
Termination	Line: RJ45, two center cores. External loudspeaker/external signal device, etc: clamp terminals.
Compass Safe Distance	>5 m
External loudspeaker	8W / 20Ω
External signal device, Call relay	6.3A (max)

ENVIRONMENTAL

Temperature	-25°C to +55°C
Humidity	+93% (at +40°C)
Ingress Protection Rating	IP-56 (exposed)
UL94	V0