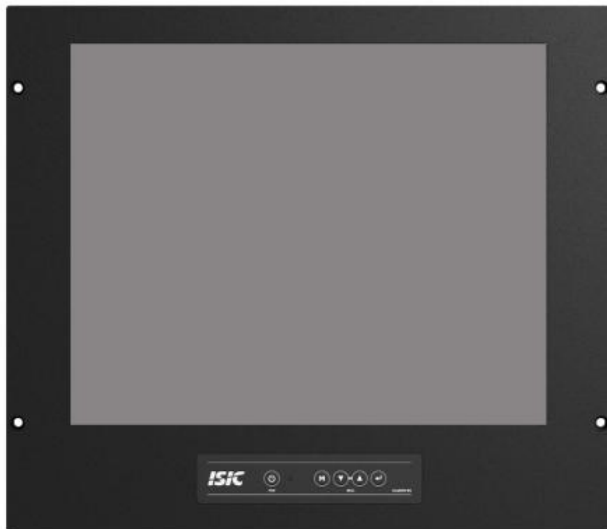


2310102127

DuraMON 19 inch Marine Display

19" Monitor



- ✓ 19" LCD display
- ✓ 1280 x 1024
- ✓ 4:3 format
- ✓ LED backlight
- ✓ Low Power consumption

Description

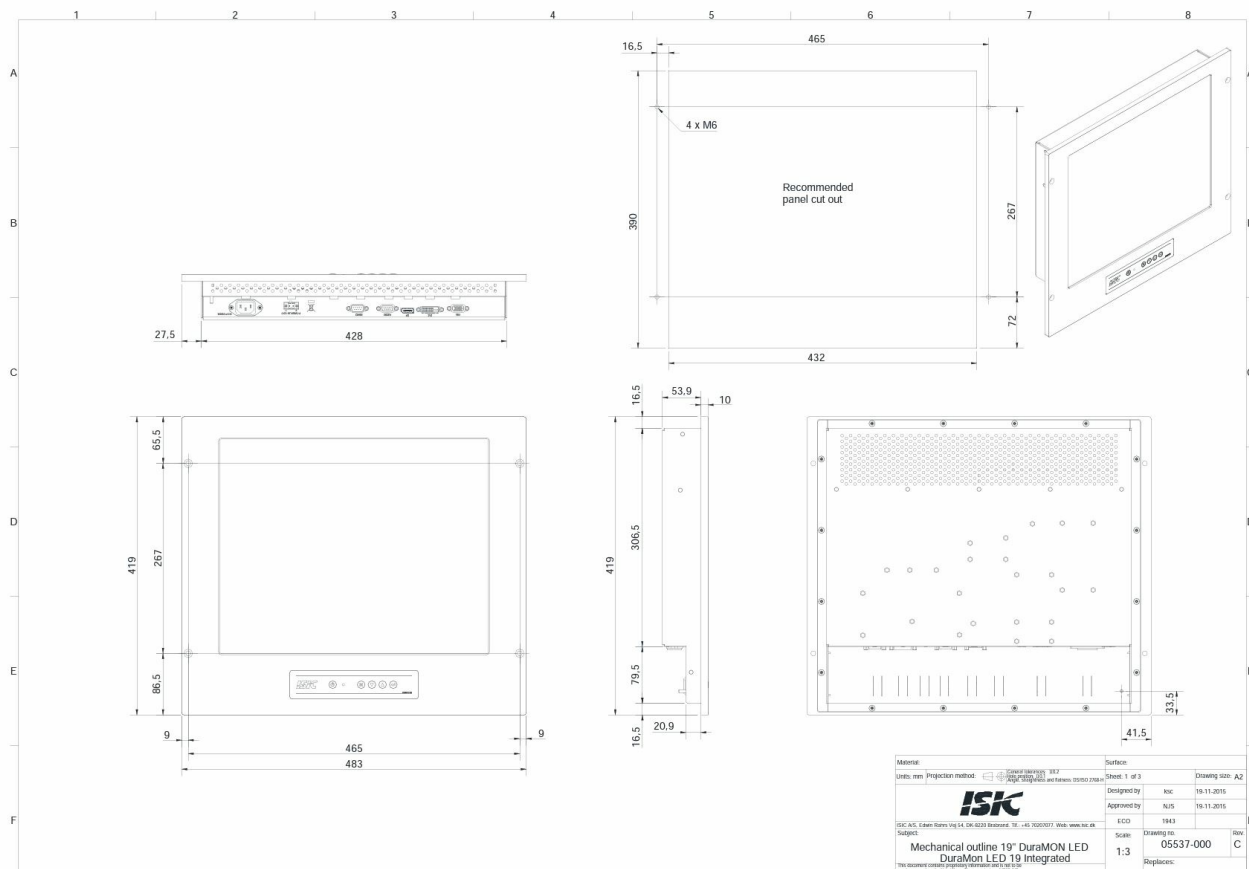
The DuraMON 19 inch Marine Display is designed for marine application with a 80° - 89° (L/R/T/B) typical viewing angle and sea water resistant aluminum with black power coating RAL 9005 on the front and rear.

DuraMON 19 inch Marine Display

It is designed for critical marine applications with its simplicity in operation, modularity, and space saving design. The monitor has easy integration, low weight, and long up time with less need for service. Additionally, it has low power consumption and zero mercury.

Technical Dimensions

6.8 Mechanical outline DuraMON 19"



Specifications

GENERAL DISPLAY

Display Size- Active area (Aspect)	19" - 376 x 301 mm (4/3)
Luminance	300 Cd/m2
Contrast	2000:1
Resolution	1280 x 1024
View angle	80° - 89° (L/R/T/B) (typical)
Materials	Front and Rear: Sea Water Resistant Aluminum w. black power coating RAL 9005
Window	Anti Reflection coated front glass
Protection	IP65 front – IP20 rear

INPUT / OUTPUT

Video Inputs- RGB:	Analogue 0.7 Vpp positive at 75Ω
	Separate sync or sync on green
	Generally all VESA compatible video modes are supported up to 165MHz (up to UXGA 60Hz and WUXGA 60Hz reduced blanking).
	Horizontal sync: 15-100 kHz (automatic)
Video Inputs- DVI:	Vertical sync: 30-85 Hz up to 1280x1024, 30-60 Hz up to 1920x1200
	Generally all VESA compatible video modes are supported up to 160MHz (up to UXGA 60Hz and WUXGA 60Hz reduced blanking).
	Special modes supported on request.
	Option available for S-video and Composite video.
Control inputs	1x RS232 – for remote control
	Option available for Touch 1x RS232
	Option available for integrated Alarm Buzzer

POWER SUPPLY OPTIONS

Standard	90-264Vac. 50-60Hz Input
Optional	18-36Vdc Input

ENVIRONMENTAL CONDITIONS

Operating Temperature	-15 to 55 °C
Storage Temperature	-25 to 70 °C
Relative Humidity	8 to 90 %

APPROVALS

CE Mark	EN61000-6-2 & EN61000-6-4
Marine	IACS E10 Rev. 5 & IEC 60945 Ed. 4
ECDIS	IEC 61174
Radar / Navigation	IEC 62388 and IEC 62288

PHYSICAL DIMENSIONS

Size	483 (W) x 419 (H) x 64 (D)
Weight	app. 9 kg