

2310111131

Wall Mount for Autodome IP 5000i

Wall mount



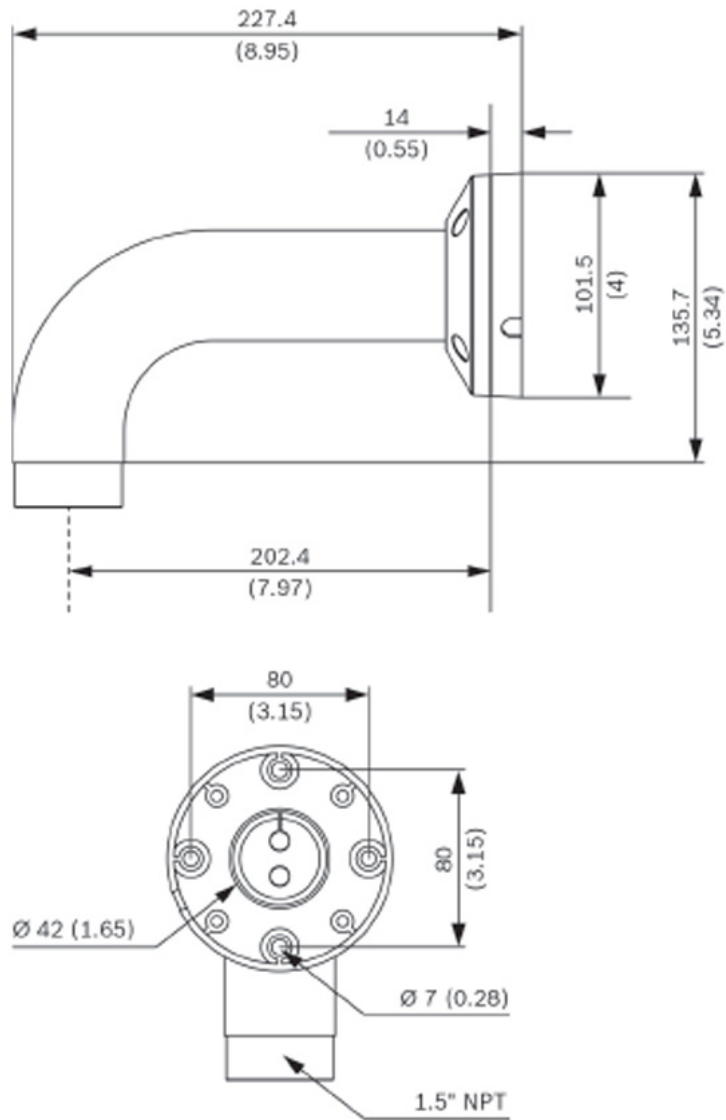
- ✓ Integrated swivel function
- ✓ Modular design for fast and easy installation
- ✓ Weather resistant finish to maintain cosmetic appearance
- ✓ Vandal resistant design for indoor and outdoor use



Description

The Wall Mount for Autodome IP 5000i supports multiple installation scenarios including direct installation to a wall, pole, or corner through the use of a suitable adapter. The integrated swivel function ensures the installed camera is always level. The mount allows easy cable management or it can be combined with additional surface mount boxes to cater for conduit connections.

Technical Dimensions



***NDA-U-WMT Pendant wall mount
Dimensions in mm (inch)***

Specifications

MECHANICAL

Dimensions (connection plate)	Φ 101.5 mm
Dimensions (W x H)	227.4 x 155.7 mm
Weight	650 g
Standard Color	White (RAL 9003)
Construction Material	Aluminum alloy

PARTS INCLUDED

	1 Wall mount
	4 M5 x 16mm pan head Torx screw with Zinc coating
	1 Thread seal tape: PTFE tape
	1 IP rubber plug
	1 T25 Torx key

CERTIFICATIONS AND APPROVALS

Salt mist	IEC60068-2-52
Vibration	NEMA TS2
Shock	IEC60068-2-27
Impact	IK10