



1002000200

## ICX-510

Server for Zenitel Connect Pro, providing HD voice and video communications



- ✓ Made to provide audio critical communication in any environment
- ✓ Supports up to 50 concurrent calls, 200 devices (IP-speakers, intercoms etc) per server
- ✓ Environmentally friendly and energy saving - max. 15 W
- ✓ Secure boot, hardware Root of Trust
- ✓ High speed network ports to support multiple video calls
- ✓ Large memory supports future feature expansion and new services
- ✓ Memory extension via SD card and USB
- ✓ 1U high, fanless design, vibration proof

 UL Certified Intercom  HD Voice

## Description

ICX-510 is the server hardware for Zenitel Connect Pro. Zenitel Connect Pro is the singular communication platform that is designed to cater to business, security, and safety communication needs. It empowers security teams with an easy-to-configure, easy-to-use platform for day-to-day operations.

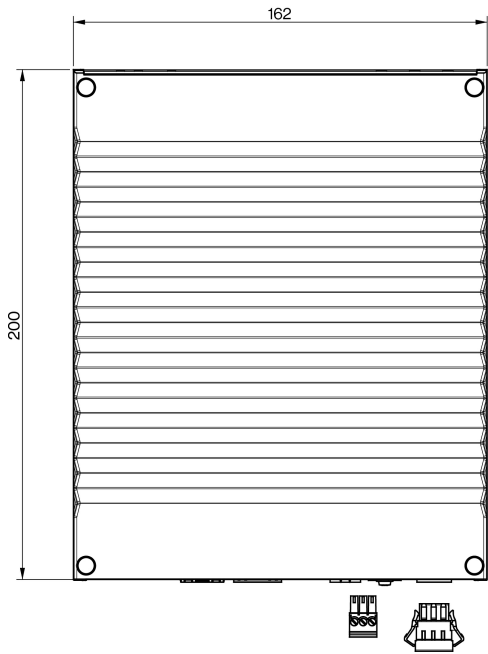
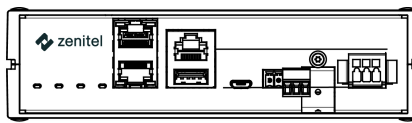
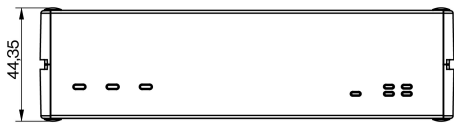
Zenitel Connect Pro is designed to complement your video, access control, and other security systems with unified critical communications; enhancing situational awareness, reducing response time, and optimizing overall security posture. Thanks to its Open Standard design, Zenitel Connect Pro is ready for integration with world leading security and communication platforms. Zenitel Connect Pro is developed with a strong focus on simplified deployment & integration, cybersecurity, and regulatory compliance.

ICX-510 is designed to operate in high demanding electrical, mechanical and operational environments. ICX-510 delivers a high level of system uptime even during a software upgrade where downtime is kept to the minimum possible.

Power supply, mounting equipment, and licenses not included. See *Accessories* and *Used With* tabs for more information.

Read [additional information here](#).

## Technical Dimensions



all dimensions in mm

# Specifications

## MECHANICAL & ENVIRONMENTAL

Dimensions (WxHxD)	162 x 44.5 x 200 mm / 6.38 x 1.75 x 7.87 inches
Weight	1 kg / 2.2 lbs
Power	Nominal 24VDC - 48VDC, 15 W (min/max: 20VDC-63VDC)
Mounting	Wallmount or 19" rack
Processor subsystem	NXP LS1043
Storage subsystem	Solid state (4096 MB Flash). MicroSD, USB
Temperature Range	-15°C to +55°C
Relative Humidity	<95%

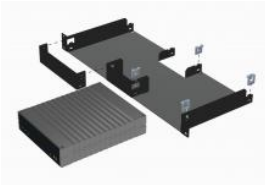
## FEATURES

Memory	4096 MB SDRAM, 4096 MB NAND Flash, 128 MB NOR Flash
Network capacity	2x 1Gbit Ethernet ports
Subscriber Capacity	200 IP devices per server
Busy Hour Call	15 000 BHCA
Number of simultaneous calls	50 simultan calls
Software Integrity Check	SHA256
IP Priority	DiffServ, IP TOS
IP Security	Hardware root of trust, SSH, HTTPS, firewall, authentication and authorization
SIP	RFC 3261, SIP INFO, RE-Invite. RFC 2833, RFC 4733,
Data interface for integration	Zenitel Link - RESTAPI and Publish/Subscribe API
Configuration	System Configuration via an easy to use web interface
Monitoring and Logging	Web
SW Upgrade of Zenitel Connect	Web
SW Recovery	Recovery via 2nd partition
VoIP Audio	HD Voice - G.722 (7 KHz), Telephone Audio - G.711 (3.4 KHz)
Call Modes	Open mode, ringing mode, call request mode with priority and call escalation

## CERTIFICATIONS

EMC	IEC/EN 61000-6-2 Industrial Immunity
	IEC/EN 61000-6-4 Industrial Emissions
	IEC/EN 61000-6-1 Light Industrial Immunity
	IEC/EN 61000-6-3 Light Industrial Emission
	EN 55032 class B Multimedia equipment
Maritime	IEC/EN 60533 Maritime
	IEC/EN 60945
Vibration	2Hz-100Hz (IEC/EN 60068-2-6)
Dry heat	55°C (IEC/EN 60068-2-2)
Low Temperature	-15°C (IEC/EN 60068-2-2)
Damp Heat, Cyclic	40°C / 93%RH (IEC/EN 60068-2-2)
Safety	UL62368-1 certification
	CB certification to IEC62368-1

## Accessories



IA-RS1

Rack Shelf for ICX-500/510 - 19"

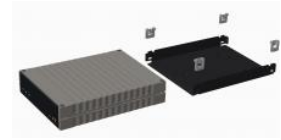


IPS-AC1

PSU for ICX-500/510



Power Supply 100-240VAC/48VDC 2A



IA-MB1

Mounting Bracket for ICX-500/510

## Used With



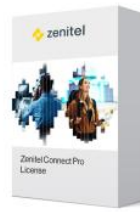
**Zenitel Connect Pro - Device license - ZCL-IC1**

Device license for Device group 1



**Zenitel Connect Pro - Integration license - ZCL-API**

License for integration via REST API and PubSub API



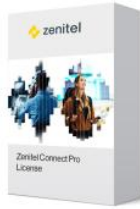
**Zenitel Connect Pro - iPBX trunk - ZCL-PBX**

Device license per defined trunk



**Zenitel Connect Pro Core for x64 - ZCC\_x64**

Unified Critical Communication Platform with integrated security



**Zenitel Connect Pro Software Maintenance Subscription - ZCUL-IC**

Upgrade subscription, per connected device - 3 years