

2310131045

## Ex Proof Communication Box MBX2MAA

EXPLOSION-PROOF COMMUNICATION BOX IN STAINLESS STEEL



- ✓ Certifications for use in Zones 1 and 21IC Group (Gas) and in Zones 21 and 22 IIIC Group (Dust); ambient temperature up to +80°C (+176°F)
- ✓ AISI 316L stainless steel construction
- ✓ Designed to work exclusively with Videotec products and accessories
- ✓ 2 bypass for analog video signals with BNC connectors
- ✓ 2 bypass for I / O signals with multi-pin connectors

---

### Description

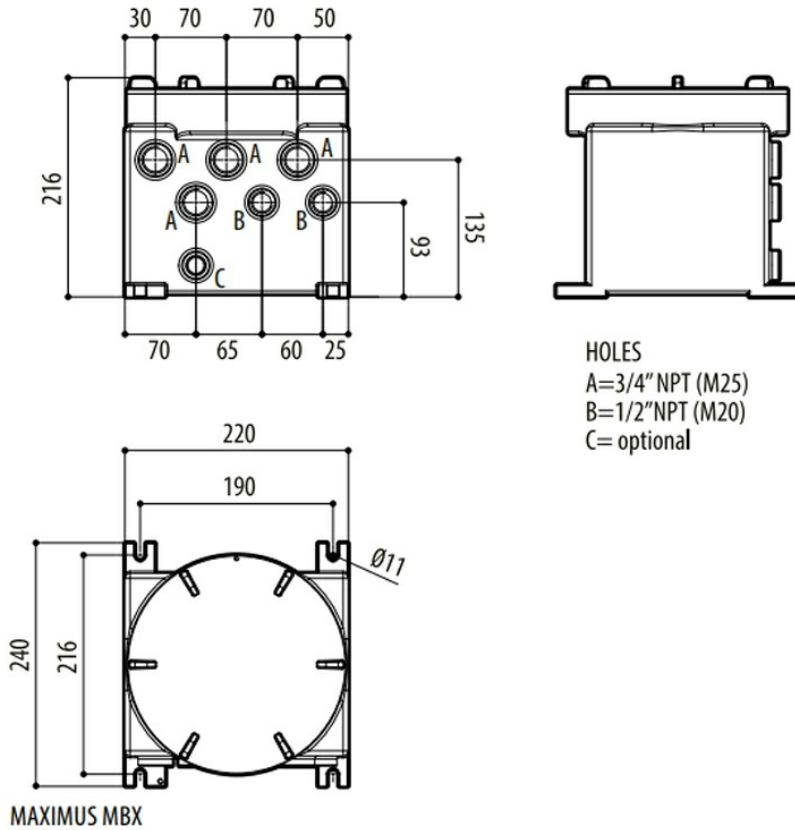
The Ex Proof Communication Box MBX2MAA is designed to integrate seamlessly with one or more IP or analogue cameras from the Pelco ExSite Enhanced 2 Series, Existe Pro, MAXIMUS MHX, WASEX range. This device can connect a 24Vac-powered PTZ and its washing kit, or two fixed cameras equipped with washing kits.

The Ex Proof Communication Box MBX2MAA provides the devices that it connects to with a low-voltage local power supply. It also offers a Fast Ethernet connection thanks to the integrated Ethernet switch that is equipped with 3 RJ45 ports and an SFP port for fiber optic connection. The SFP module can be chosen according to the requirements of the installation. It has been designed so that the inside gives easy access to cables, making connection effortless. The internal circuitry also makes it possible to bypass analogue video signals and all input/output connections available across the Pelco ExSite Enhanced 2 Series, Existe Pro, MAXIMUS MHX, WASEX range.

### Technical Dimensions

## TECHNICAL DRAWINGS

The indicated measurements are expressed in millimetres.



Used With



MVX2P0WF001A

High-Spec Ex-Proof Day/Night Camera in a Compact Design



MVX-HD2-F0WAZ01A

Explosion-Proof IP Camera, 1080p, 30x zoom, Wiper



MVX-HD210-WAZ00B Explosion-proof camera

Maximus MVX Delux Explosion-proof FULL HD CCTV camera



MPXHD21A000C Series2 EX PTZ Camera

MPX Series 2 Delux IP PTZ Ex camera, super low-light, full HD