

2131000147

CL-135T-MED

5" Ceiling Speaker 100V, 6W, fire dome



- ✓ MED approved
- ✓ Miniature design
- ✓ Steel back box to reduce fire risk and spread
- ✓ Supports loop wiring with 2 x M20 back box glands



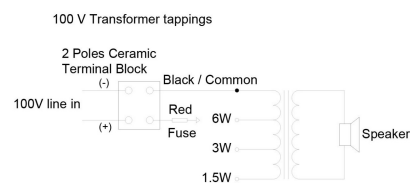
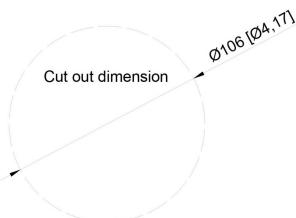
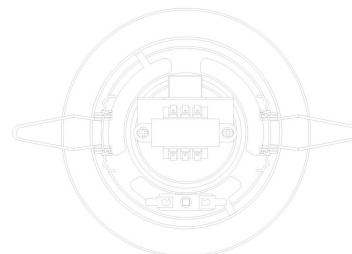
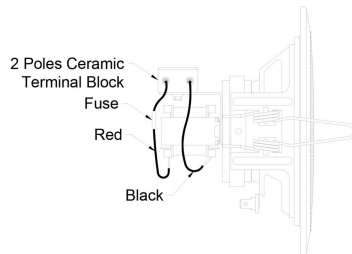
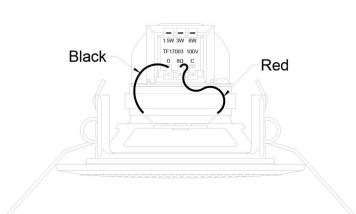
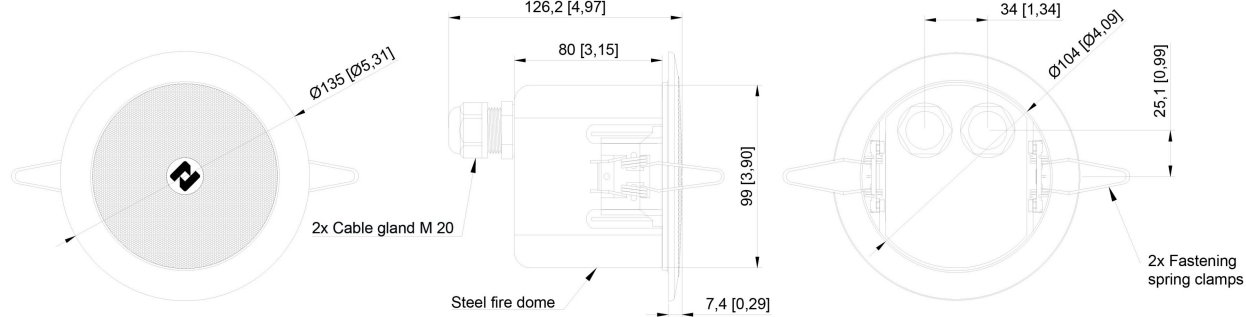
MED Certification

Description

5" miniature speaker for small rooms or where space for mounting speakers is limited.

The speaker has a robust, yet discreet design, and installation is easy with two spring clamps.

Technical Dimensions



Specifications

GENERAL

Dimensions (Diameter x Depth)	Ø135 x D82mm
Cut Out Dimension (Dia.)	Ø106
Mounting	Flush mounted – ceiling or wall by spring clamp
Operating temperature range	-20 ~ + 70
Fuse	Thermal fuse
Rated Power	6W
Max Power	10W
Power tapings	6W - 3W - 1.5W
Frequency response	65 Hz - 20 KHz
Sensitivity	83 dB ± 3dB, 1W/1M
Maximum SPL	91 dB
Rated Voltage	100 V
Termination	Ceramic Terminal Block With thermal fuse
Baffle Material	Steel , RAL 9010
Mesh Grille	Steel , RAL 9010
Weight	0,52 kg
Environmental Condition	Protected
Compass safe distance	150 cm

Installation and operation:

1. Mount cable through cable gland and connect cable leads to 100V line in + - terminals
2. Select required loudspeaker tapping with red cable on the transformer
3. Fasten the back box onto front of loudspeaker
4. Fasten cable gland(s) and ensure the cable leads are not placing strain on the terminals
5. Place the loudspeaker in front of ceiling cut-out. Hold the fastening spring clamps aligned with back box and push loudspeaker into correct position. Make sure front grille is surface with ceiling for correct mounting
6. Once installed the loudspeaker can be used

Maintenance:

1. No scheduled maintenance is required
2. For any kind of maintenance secure loudspeaker is not energized
3. Loudspeaker is equipped with fuse. If fuse broken pull out loudspeaker from ceiling and remove back box from front loudspeaker to access