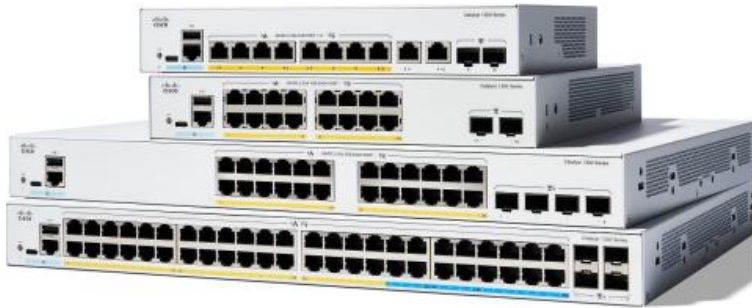


2220012280

C1300-48T-4G

Cisco C1300 48-port 1G switch with 4x1G SFP



Description

The Cisco Catalyst 1300 Series Switches are fixed, managed, enterprise-class Gigabit Ethernet Layer 3 switches designed for small and medium-sized business and branch offices. These simple, flexible, and secure switches are ideal for deployment out of the wiring closet. The Catalyst 1300 Series operates on customized Linux OS software, with an intuitive dashboard that simplifies network setup and advanced features that accelerate digital transformation, while pervasive security protects business-critical transactions. The 1300 Series switches provide the ideal combination of affordability and capabilities for branches and growing networks and help you create a more efficient, better-connected workforce. When your business needs advanced networking features and security for the digital transformation, yet value is still a top consideration, you're ready for the Cisco Catalyst 1300 Series Switches.

Cisco Catalyst C1300-48T-4G is managed 48-port switch with 48 auto-sensing 10/100/1000 ports and 4x Gigabit Ethernet SFP ports .

Specifications

PORTS

10/100/1000 RJ45	48
SFP	4
Console ports	1x RJ45 and USB type C Port

ENVIRONMENT

Operating temperature	-5°to 50°C
Operating relative humidity	10% to 90%, relative, non-condensing

ELECTRICAL CHARACTERISTICS

Frequency	50 to 60 Hz
Maximum heat dissipation	132.39 BTU/hr
AC voltage	100 to 240 VAC
Maximum power Consumption	110V = 38.8W 220V = 38.07W

DIMENSIONS & WEIGHT

Dimensions (W x D x H)	445 x 288 x 44 mm
Weight	3.95 kg
Mounting	Rack Mountable, 1HU

Accessories



MGBLX1

1000BASE-LX SFP
transceiver Single-mode for
SF300 and SF302



MGBSX1

1000BASE-SX SFP
transceiver Multimode for
SF300 and SF302



GLC-SX-MMD

Cisco 1000Base-SX SFP
Transceiver Module for
MultiMode Fiber - IEC60945
Compliant



GLC-LH-SMD

Cisco 1000BASE-LX/LH
SFP for Both Multimode and
Single-Mode Fibers



GLC-TE

Cisco GLC-TE 1000BASE-T
1G SFP Transceiver - RJ45