

2810011077

CAB-AVF-S-115

Active ventilation for CABxx with a steel door, 115 VAC



- ✓ The package consists of:
 - ✓ Fan-and-Filter Unit: front-door mounting, 148.5x148.5 mm, 115 VAC
 - ✓ Internal Thermostat (with mounting plate)
 - ✓ Roof Air Outlet (non-powered)
- ✓ IP22

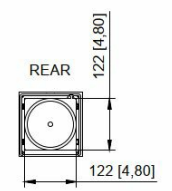
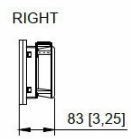
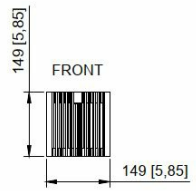
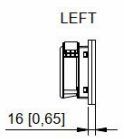
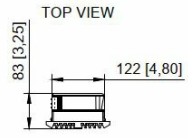
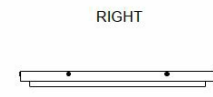
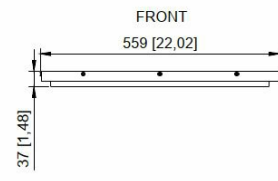
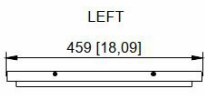
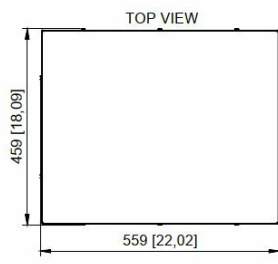
Description

The CAB-AVF-S-115 active ventilation package is a cost-effective solution designed for the CABxx series steel-door cabinets. It offers easy installation and simple maintenance, making it suitable for both new and existing enclosures. The fan-and-filter unit supports multiple mounting positions—front, side, or rear—allowing flexible integration based on airflow needs. This package provides reliable airflow management and helps maintain stable operating temperatures inside the different cabinets.

Note: For CAB24-FWD-V2, please add one additional fan:

- ✓ 2810011033 - Fan-and-Filter Unit: front-door mounting, 148.5x148.5 mm, 115 VAC

Technical Dimensions



Specifications

GENERAL (FAN-AND-FILTER UNIT)

Rated operating voltage	115 V, 1~, 50/60 Hz
Power consumption	At 50 Hz: 15.4 W / At 60 Hz: 15.8 W
Rated current max.	At 50 Hz: 0.2 A / At 60 Hz: 0.21 A
Air throughput, unimpeded airflow (with chopped-fibre filter)	At 50 Hz: 53 m ³ /h / At 60 Hz: 64 m ³ /h
Air throughput, unimpeded airflow (with pleated filter)	At 50 Hz: 63 m ³ /h / At 60 Hz: 72 m ³ /h
Air throughput with matching outlet filter including chopped-fibre filter	At 50 Hz: 40 m ³ /h / At 60 Hz: 46 m ³ /h
Pre-fuse	Miniature circuit-breaker/fuse: 4 A
IP protection category to IEC 60 529	IP 54-56 (depending on filter type)
Dimensions W x D x H	148.5 x 82.5 x 148.5 mm
Installation depth	64 mm
Weight	0.859 kg

GENERAL (INTERNAL THERMOSTAT)

Rated operating voltage	24-230 VAC, 1~ / 24-60 VDC
Dimensions W x D x H	71 x 33.5 x 71 mm
Weight	0.12 kg

GENERAL (ROOF AIR OUTLET)

Dimensions W x D x H	559 x 37 x 459 mm
IP Protection	IP22

Used With



CAB42F-V2

Floor cabinet 19" 42HU
600x600x2000mm fixed frame

Item Number: 2810010113



CAB42FW-V2

Floor cabinet 19" 42HU
800x600x2000mm fixed frame

Item Number: 2810010114



CAB42FWD-V2

Floor cabinet 19" 42HU
800x800x2000mm fixed frame

Item Number: 2810010115



CAB42SWD-V2

Floor cabinet 19" 42HU
800x800x2000mm swing frame

Item Number: 2810010120



CAB42FD-V2

Floor cabinet 19" 42HU
600x800x2000mm fixed frame

Item Number: 2810010121



CAB42FWDD

Floor cabinet 19" 42HU
800x1000x2000mm fixed frame

Item Number: 2810010123