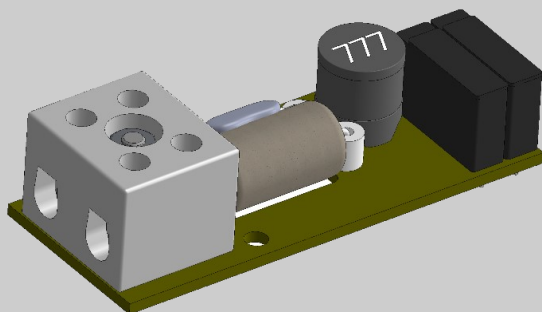


EOLZ01



- LOUDSPEAKER CIRCUIT MONITORING DEVICE
- V2000 COMPATIBLE
- THERMAL FUSE
- CERAMIC TERMINAL BLOCK
- IDEAL FOR BOTH RETROFIT & NEW INSTALLATIONS

OVERVIEW

The EOLZ01 is a tuned load for use with V2000, D Series amplifiers and LSZDC amplifier interface and enables end-of-line loudspeaker circuit monitoring. By installing the EOLZ01 after the last loudspeaker, open/short circuit surveillance is reliably achieved to the end of each speaker circuit.

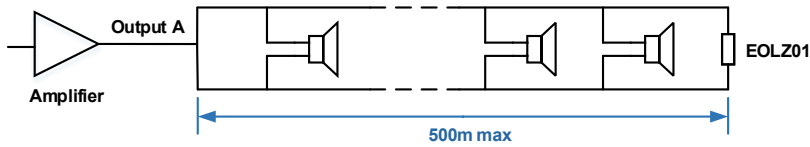
The EOLZ01 is ideal for both new and retrofit applications, since it does not require any additional hardware to be fitted either to loudspeakers or loudspeaker circuits.

To prevent the EOLZ01 short from circuiting a speaker circuit in the event of a fire, loudspeaker cable is connected via a ceramic terminal block and a thermal fuse protects PCB mounted components.

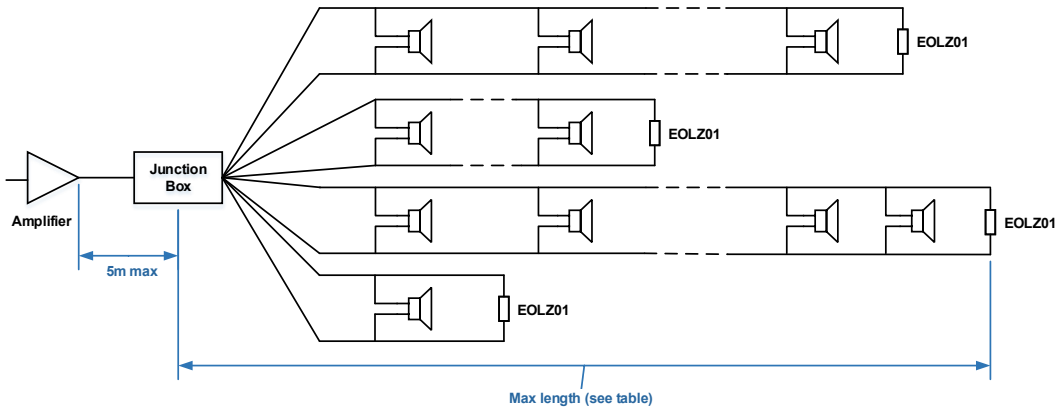
Loudspeaker circuits up to 500m in length can be monitored. Up to 4 EOLZ01 can be monitored by each LSZDC. If A and B circuits are driven by a single amplifier the number of EOLZ01 devices must be equal on each circuit. As the number of circuits from each amplifier increases, the maximum length of any single monitored leg reduces. Please see the diagrams below and installation guide for more information.

TYPICAL ARCHITECTURES

Single Circuit



Star Circuit

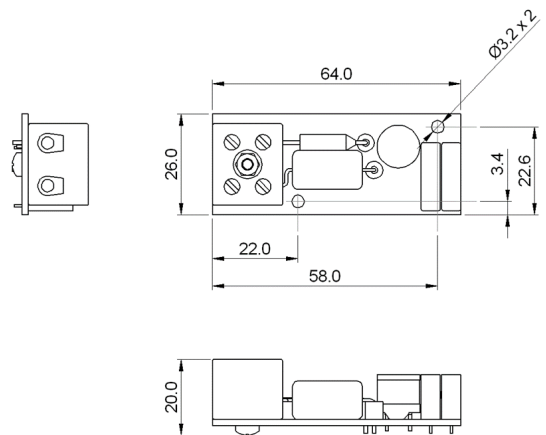


| EOLZ Qty | Max Length |
|----------|------------|
| 1 | 500m |
| 2 | 400m |
| 3 | 300m |
| 4 | 200m |

Please note, other design restrictions apply. For more detailed design requirements, please see the Installation Guide, ASL document reference: U-0623-0640.

SPECIFICATION

Operating and Storage Temperature..... -5 to 55°C
 Humidity Range.....0% to 93% non-condensing
 Dimensions (H x W x D)..... 20.0mm x 26.0mm x 64.0mm
 Weight.....31g



This equipment is designed and manufactured to conform to the following EC standards:
 EMC: EN55103-1/E1, EN55103-2/E5, EN50121-4, ENV50204
 Safety: EN60065

Manufacturer

Application Solutions (Safety and Security) Limited
 Unit 17 - Cliffe Industrial Estate - Lewes - East Sussex - BN8 6JL - U.K.
 Tel: +44(0)1273 405411

www.asl-control.co.uk

All rights reserved.

Information contained in this document is believed to be accurate, however no representation or warranty is given and Application Solutions (Safety and Security) Limited assumes no liability with respect to the accuracy of such information.



Assessed to ISO 9001
 LPCB Cert No: C1043