

EN54 BASS REFLEX CEILING SPEAKER

- BASS REFLEX
- 15W 100V LOUDSPEAKER
- SIZE 5" (130MM)
- QUICK MOUNT
- WEATHERPROOF TO IP21C
- IMPACT RESISTANT ABS
- EXCELLENT SOUND QUALITY
- FULLY CERTIFIED TO EN54-24



OVERVIEW

The SPCB-15W-50-EN54 is a 15W 100V 2-way bass reflex ceiling loudspeaker with neodymium tweeter. It has a 5" (130mm) loudspeaker chassis providing excellent sound quality for speech and background music. Certified to EN54-24 the speaker is fitted with a 100V transformer with four power level adjustment tapings of 15W, 7.5W, 3.75W and 1.9W. Low impedance operation is also possible.

The impact-resistant ABS housing in RAL 9016 guarantees long-term stability. For additional reliability, a thermal fuse and a strain relief fitting are provided. The speaker is protected to class IP 21C and the speaker chassis is treated against damp. Easy installation is made possible through a simple screw mounting system.

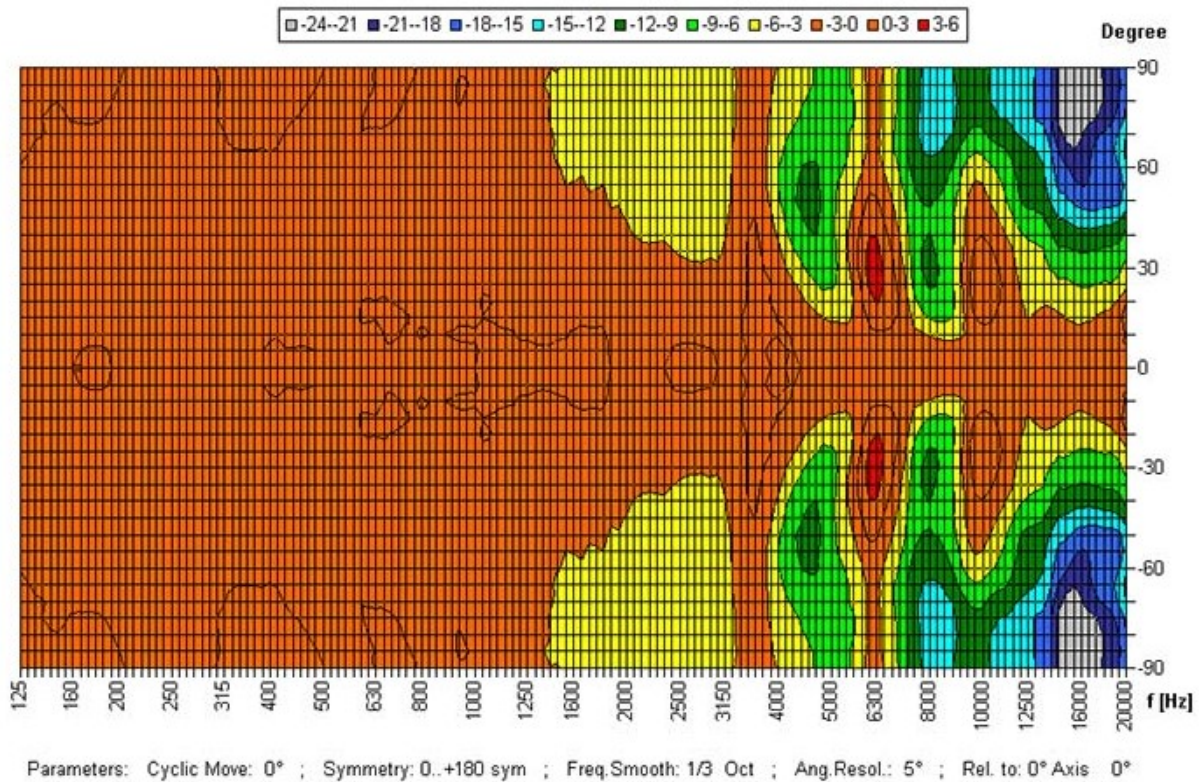
The loudspeaker is optionally available with a DC blocking capacitor fitted, in order to provide compatibility with DC loudspeaker line monitoring systems. The part number for this DC monitoring compatible version is SPCB-15W-50-EN54-DC.

EASE data is available for this speaker on request.

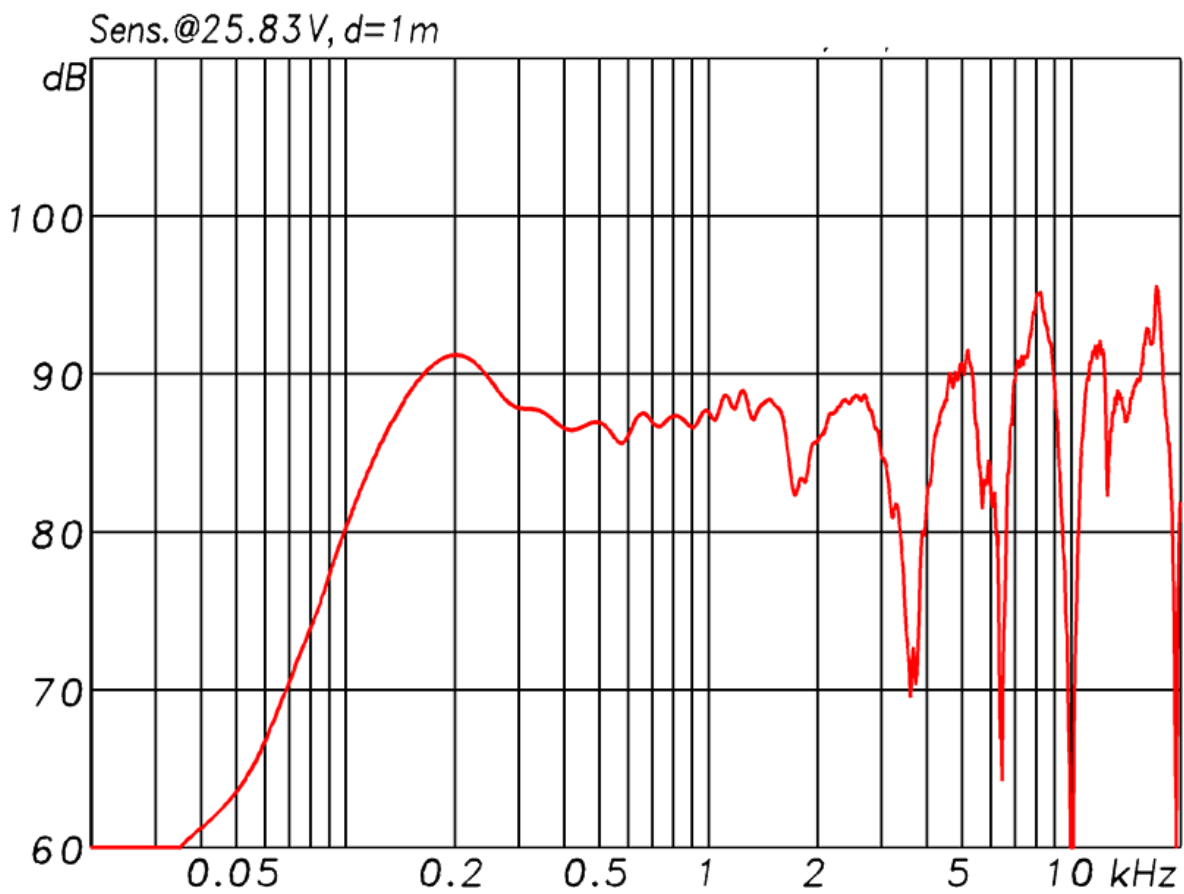
PRODUCT ATTRIBUTES

Power Tappings	15 / 7.5 / 3.75 / 1.9 W (8)	
Impedance (100V)	667 / 1333 / 2667 / 5263 ohm	
Frequency Range	100 - 22,800 Hz	
Frequency Response	100 - 22,800 Hz	
SPL 1W / 1m, peak	92.9 dB	
SPL 1W / 4m, peak	80.9 dB	
SPL Pmax / 4m, peak	92.9 dB	
Sensitivity EN54-24, 1W / 4m; 1W / 1m	74.2 dB	86.2 dB
Dispersion (-6dB, 500Hz)	180°	
Dispersion (-6dB, 1KHz)	180°	
Dispersion (-6dB, 2KHz)	145°	
Dispersion (-6dB, 4KHz)	95°	
Temperature Range	-20 / +80 °C	
Dimensions	213 x 115 mm	
Ceiling Cut-out	178 mm	
Weight (net)	1.73 kg	
Colour	RAL 9016 'Traffic White'	
Connector	4-pin screw terminal	
Mounting	Quick-mount clamps	
IP Rating	IP21	
Packing Unit	8	
Maximum cable cross section	4.9mm ²	
Maximum cable cross section loop	2 x 4.9mm ²	

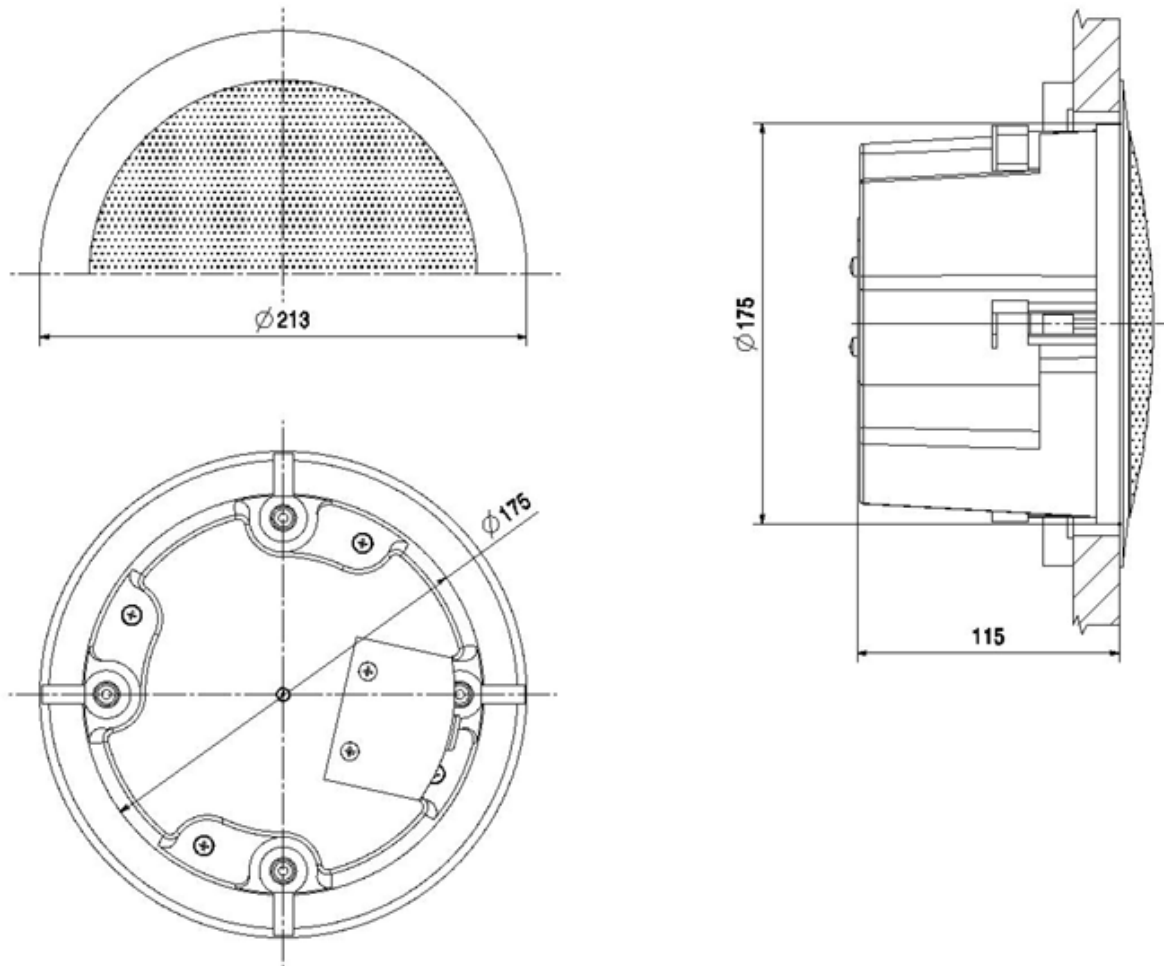
POLAR DIAGRAM



FREQUENCY RESPONSE DIAGRAM



DIMENSIONAL DIAGRAM



Measurements according to DIN IEC 268-5
 RoHS compliant (2011/65/EU & 2015/863/EU)



This equipment is designed and manufactured to conform to the following EU Directives:

Low Voltage: 2014/35/EU
 Restriction of Hazardous Substances (RoHS): 2011/65/EU & 2015/863/EU

Manufacturer

Application Solutions (Safety and Security) Limited
 Unit 17 - Cliffe Industrial Estate - Lewes - East Sussex - BN8 6JL - U.K.
 Tel: +44(0)1273 405411

www.asl-control.co.uk

All rights reserved.

Information contained in this document is believed to be accurate, however no representation or warranty is given and Application Solutions (Safety and Security) Limited assumes no liability with respect to the accuracy of such information.



Assessed to ISO 9001
 LPCB Cert No: C1043