

EN54 CEILING SPEAKER

- 6W 100V LOUDSPEAKER
- SIZE 6.5" (165MM)
- QUICK MOUNT
- SHOCK-RESISTANT HOUSING
- INGRESS PROTECTION IP55C
- HIGH EFFICIENCY
- EXCELLENT SOUND QUALITY
- FULLY CERTIFIED TO EN 54-24



OVERVIEW

The SPCF-06W-65-EN54 is a 6W 100V flush mount ceiling loudspeaker, which has a 6.5" (165mm) full-range chassis providing excellent sound quality with speech and background music, and which is certified to EN 54-24. The speaker is fitted with a 100V transformer which has three power adjustment tapings of 6W, 3W, and 1.5W.

The SPCF-06W-65-EN54 has a powder coated metal chassis and grille, with the high quality finish giving good long-term protection and resistance to corrosion. The speaker is supplied with a rear fire dome, and its enclosure is ingress protection rated to IP55C. As standard the speaker is coloured to match RAL9010 'Pure White', however the speakers can be supplied in any four-digit RAL or NCS colour, as a special order.

Quick and easy ceiling mounting is provided through the use of spring clamps, with a possible ceiling thickness of between 2mm and 45mm, and an inner ring attachment prevents the grille from falling. The 100V loudspeaker line cabling is connected by means of a two-pin ceramic block, with rubber grommets being provided for the cable connections. For additional reliability, a thermal fuse is provided and the speaker chassis is damp-resistant.

Please note that although very thin ceilings can be used as a mounting surface, it should be ensured that the ceiling thickness and strength are appropriate to the weight of the speaker, and to the thickness and weight of the 100V line cables.

Enhanced Acoustic Simulator for Engineers (EASE) data for this loudspeaker is available on request.

PRODUCT ATTRIBUTES

Power Tappings	6W / 3W / 1.5W
Impedance (100V)	1667 / 3333 / 6667 Ohms
Loudspeaker Impedance	8 Ohms
Frequency Range	404 – 10,100 Hz
Frequency Response	80 – 24,000 Hz
SPL 1W / 1m, peak	102.5 dB
SPL 1W / 4m, peak	90.5 dB
SPL Pmax / 4m, peak	98.2 dB
SPL, EN 54-24 rated noise power / 4m	89.0 dB
Sensitivity EN 54-24, 1W / 4m	80.0 dB
Sensitivity IEC 60268-5, 1W / 1m	93.0 dB
Dispersion (-6dB, 500Hz) Horizontal / Vertical Plane*	180° / 180°
Dispersion (-6dB, 1KHz) Horizontal / Vertical Plane*	175° / 175°
Dispersion (-6dB, 2KHz) Horizontal / Vertical Plane*	100° / 100°
Dispersion (-6dB, 4KHz) Horizontal / Vertical Plane*	50° / 50°
Temperature Range	-10 / +55 °C
Dimensions	220 x 109 mm
Weight (net)	1.36 kg
Colour	RAL 9010 'Pure White'
Connector	2-pin ceramic block
Mounting	Quick fit mounting
Ceiling Cut-out	198 mm
Maximum cable cross section	8mm ²
Maximum cable cross section loop	2 x 2mm ²
Verified IP Rating / EN 54 Speaker Type & Minimum Rating	IP55C / Type A (Indoors), minimum rating IP21C
Packing Unit	12

*** EN 54-24 Definitions for Speaker Reference Axis, Point, Plane + Horizontal & Vertical Planes:**

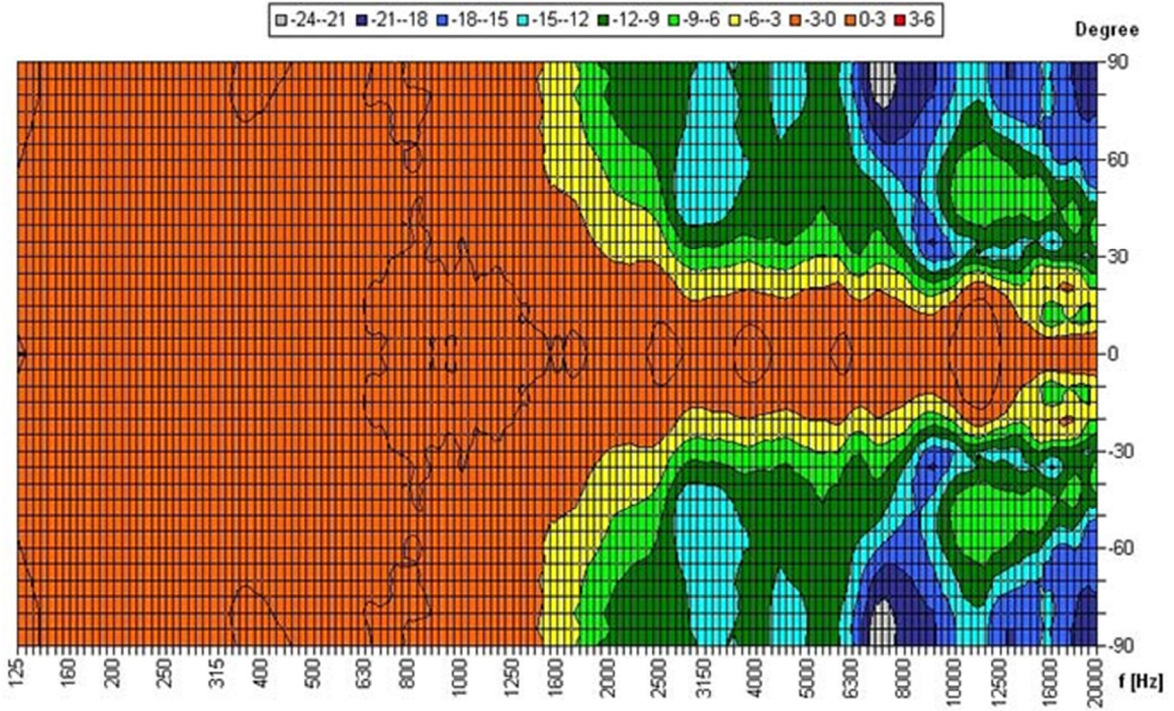
- Reference Axis: Axis is through the centre of the speaker grille surface and is perpendicular to the grille surface.
- Reference Plane: Plane is across the front of the speaker grille surface and is perpendicular to the reference axis.
- Horizontal Plane: Plane contains the reference axis and is perpendicular to the reference plane.
- Vertical Plane: Plane contains the reference axis and is perpendicular to the reference plane.
- Reference Point: Point is at the centre of the front of the speaker grille surface where all the above intersect.

All measurements in the table above relate to the Reference Axis unless otherwise stated

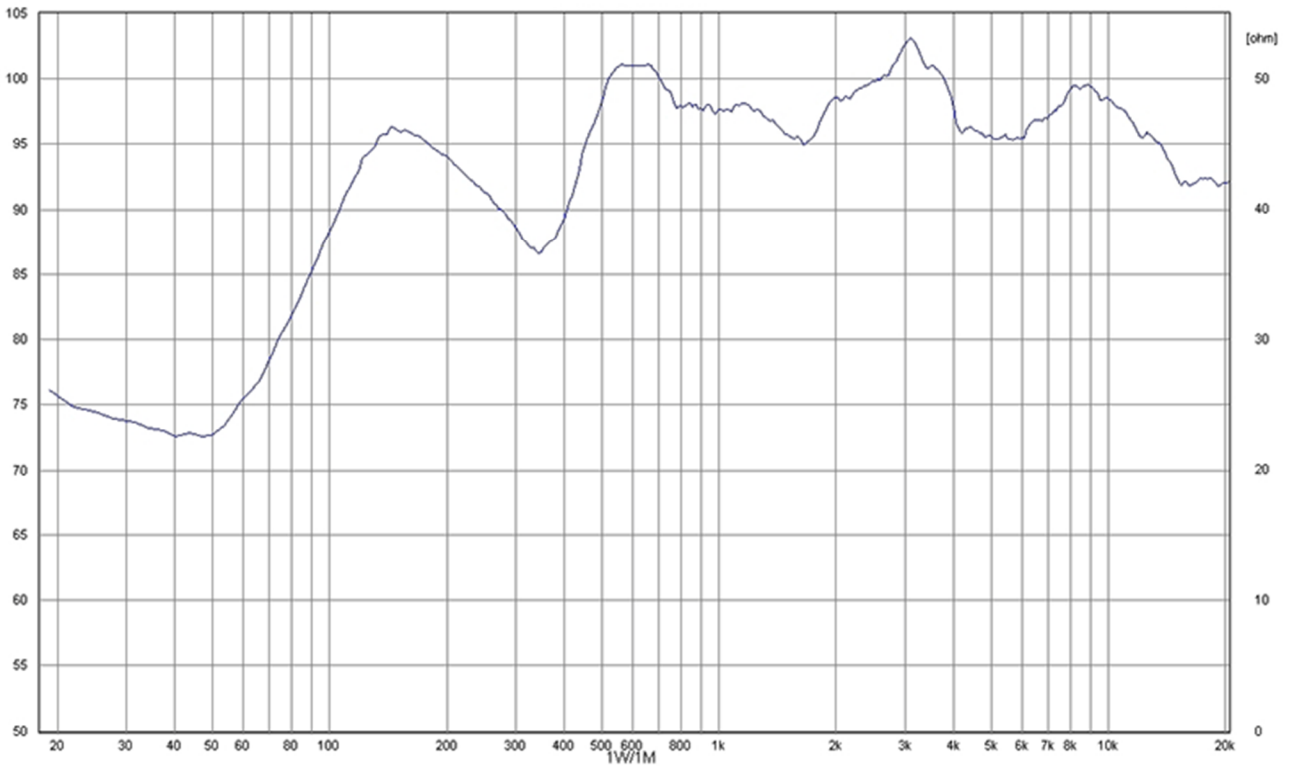
EN 54-24 Annex A, Measurement Environments:

Flush-mounted loudspeakers e.g. ceiling loudspeakers, shall be measured under half-space free field conditions.
All other speakers shall be measured under free-field conditions or in a ground plane arrangement that simulates a free-field condition.

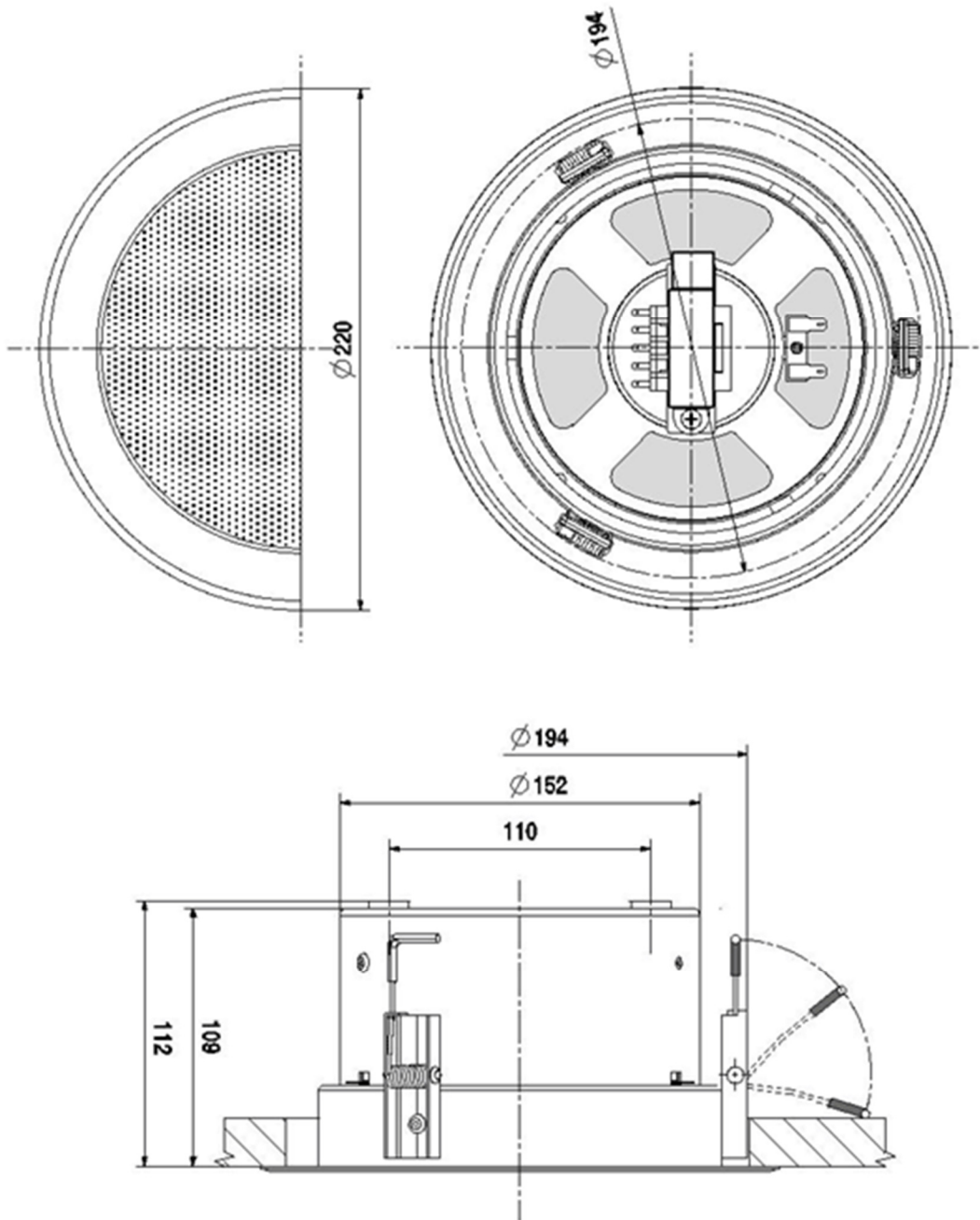
POLAR DIAGRAM



FREQUENCY RESPONSE DIAGRAM



DIMENSIONAL DIAGRAM



This equipment is designed and manufactured to conform to the following EU Directives:
 Electromagnetic Compatibility (EMC): 2014/30/EU
 Low Voltage: 2014/35/EU
 Restriction of Hazardous Substances (RoHS): 2011/65/EU & 2015/863/EU

Made for:

Application Solutions (Safety and Security) Limited
 Unit 17 - Cliffe Industrial Estate - Lewes - East Sussex - BN8 6JL - U.K.
 Tel: +44(0)1273 405411

www.asl-control.co.uk

All rights reserved.

Information contained in this document is believed to be accurate, however no representation or warranty is given and Application Solutions (Safety and Security) Limited assumes no liability with respect to the accuracy of such information.



Assessed to ISO 9001
LPCB Cert No: C1043