

EN54 CEILING SPEAKER

- 25W 100V LOUDSPEAKER
- SIZE 5" (130 MM)
- QUICK MOUNT
- MAGNETIC FASTENING GRILLE
- WEATHERPROOF TO IP21C
- IMPACT RESISTANT ABS
- EXCELLENT SOUND QUALITY
- FULLY CERTIFIED TO EN54-24



OVERVIEW

The SPCM-25W-50-EN54 is a 25W 100V 2-way ceiling loudspeaker fitted with a firedome for voice alarm applications. It has a 5" (130mm) loudspeaker chassis with a high quality tweeter providing excellent sound quality for speech and background music.

Certified to EN54-24 the speaker is fitted with a 100V transformer with three power level adjustment tapings of 25W, 12.5W and 6.25W. Low impedance operation is also possible.

The impact-resistant ABS housing in RAL 9016 guarantees long-term stability. For additional reliability, a thermal fuse is provided. The speaker is protected to class IP 21C and the speaker chassis is treated against damp.

Easy installation is made possible through a simple screw mounting system. Using a magnetic fastening, the finely perforated speaker grille can be removed quickly for access or it can be easily replaced by a different coloured grille, even after installation.

EASE data is available for this speaker on request.

PRODUCT ATTRIBUTES

Description	SPCM-25W-50-EN54
Power Tappings or Low Impedance Setting	25W / 12.5W / 6.25W or 8 Ohms
Transformer Impedance	400 / 800 / 1600 Ohms
Loudspeaker Impedance	8 Ohms (midrange driver), 4 Ohms (tweeter driver)
Frequency Range	104 - 22,700 Hz
Frequency Response	111 - 21,600 Hz
SPL 1W / 1m, peak	92.1 dB
SPL 1W / 4m, peak	80.1 dB
SPL Pmax / 4m, peak	90.2 dB
SPL, EN 54-24 rated noise power / 4m	90.2 dB
Sensitivity EN54-24, 1W / 4m	75.8 dB
Sensitivity IEC 60268-5, 1W / 1m	87.8 dB
Dispersion (-6dB, 500Hz) Horizontal / Vertical Plane*	180° / 180°
Dispersion (-6dB, 1KHz) Horizontal / Vertical Plane*	180° / 180°
Dispersion (-6dB, 2KHz) Horizontal / Vertical Plane*	110° / 110°
Dispersion (-6dB, 4KHz) Horizontal / Vertical Plane*	72° / 72°
Temperature Range	-10 / +55 °C
Dimensions	216.5 x 141mm
Ceiling Cut-out	186mm
Weight (net)	1.80 kg
Colour	RAL 9016 (Traffic White)
Connector	5-pin screw terminal
Mounting	Screws
EN 54 Speaker Type & Minimum Rating	Type A (Indoors), minimum rating = IP21C
Maximum cable cross section	4.9mm ²
Maximum cable cross section loop	2 x 4.9mm ²
Packing Unit	8

*** EN 54-24 & ISO 7240-24 Definitions for Speaker Reference Axis, Point, Plane + Horizontal & Vertical Planes:**

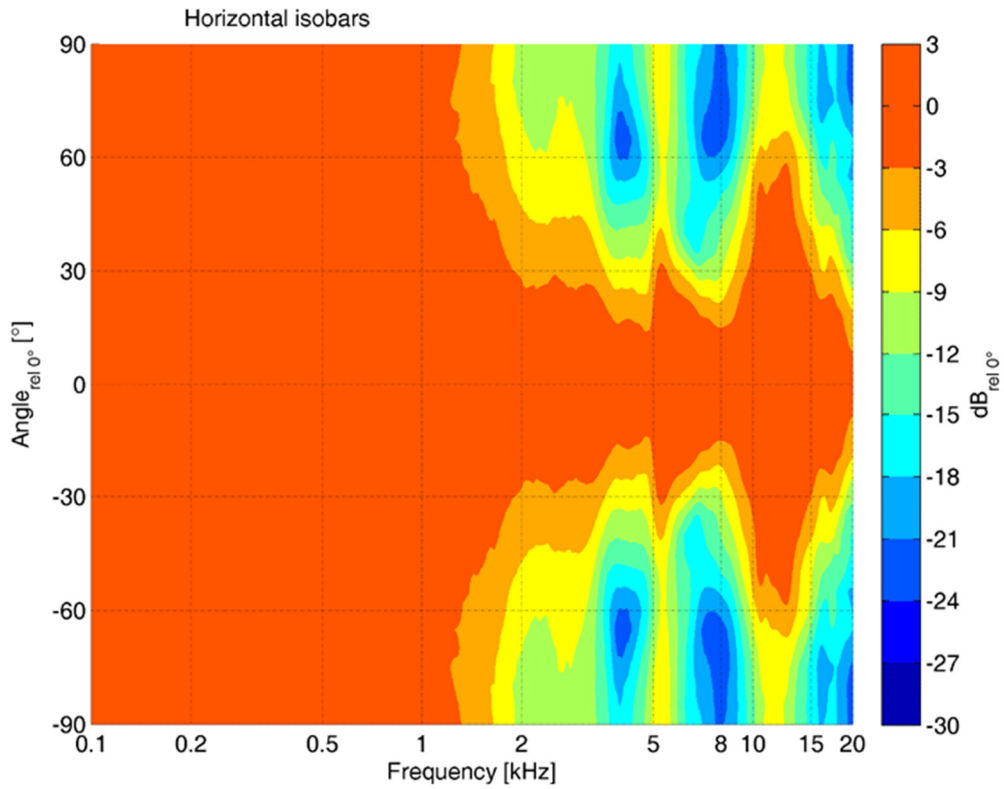
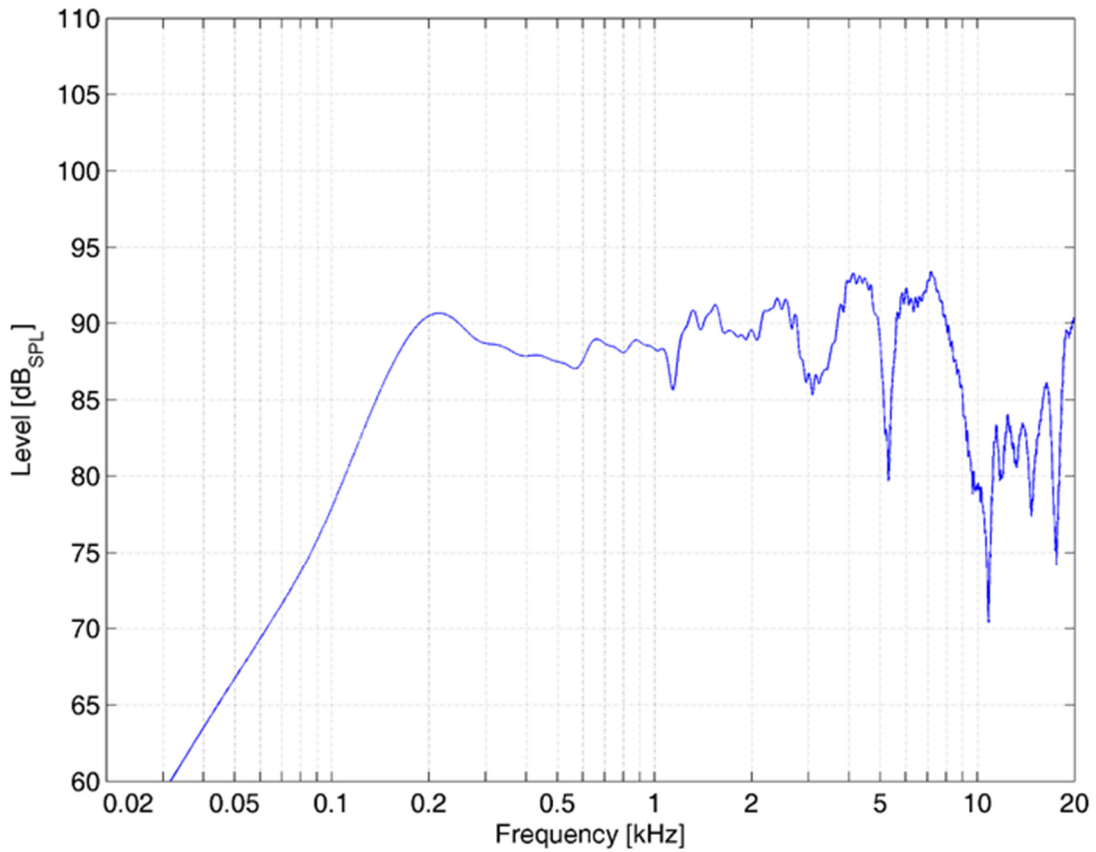
- Reference Axis: Axis is through the centre of the speaker grille surface and is perpendicular to the grille surface.
- Reference Plane: Plane is across the front of the speaker grille surface and is perpendicular to the reference axis.
- Horizontal Plane: Plane contains the reference axis and is perpendicular to the reference plane.
- Vertical Plane: Plane contains the reference axis and is perpendicular to the reference plane.
- Reference Point: Point is at the centre of the front of the speaker grille surface where all the above intersect.

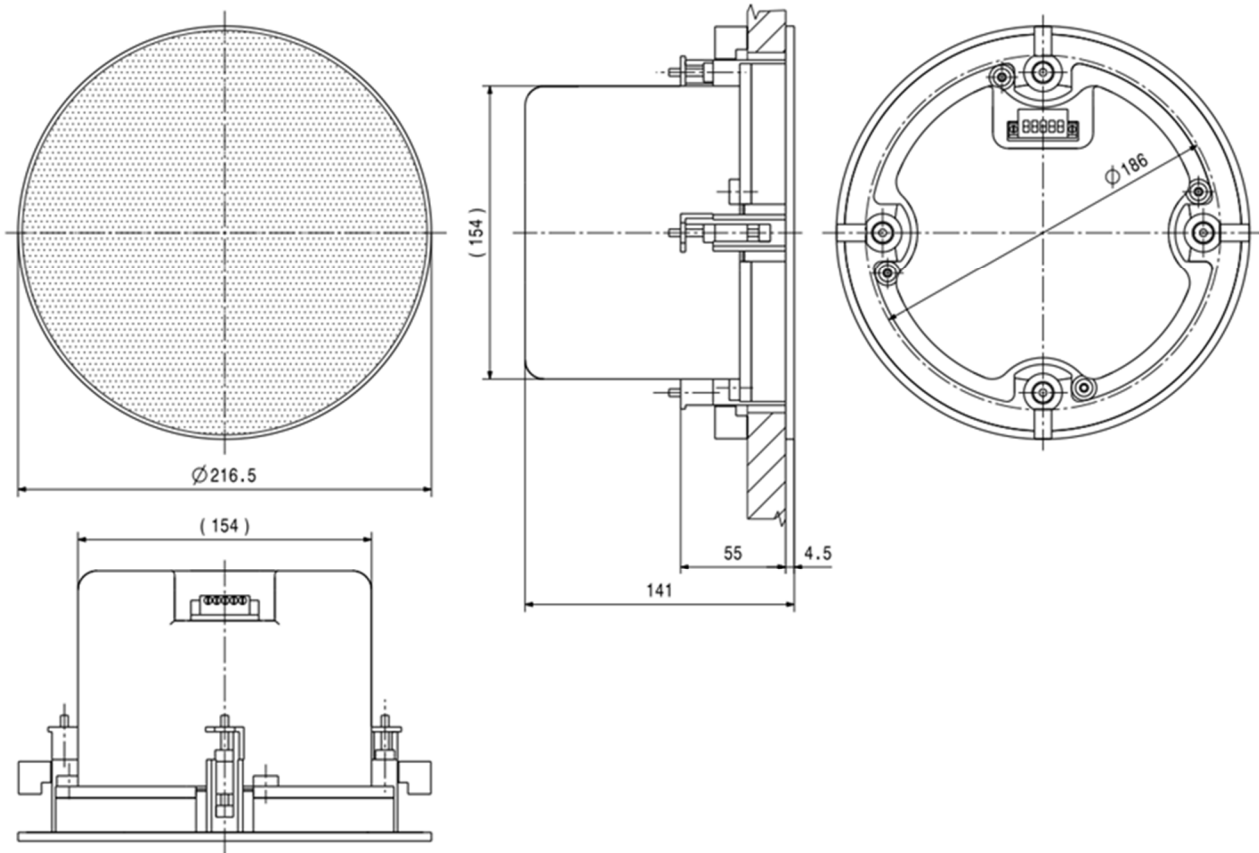
All measurements in the table above relate to the Reference Axis unless otherwise stated

EN 54-24 Annex A, Measurement Environments:

Flush-mounted loudspeakers e.g. ceiling loudspeakers, shall be measured under half-space free field conditions.

All other speakers shall be measured under free-field conditions or in a ground plane arrangement that simulates a free-field condition.

POLAR DIAGRAM

FREQUENCY RESPONSE DIAGRAM


DIMENSIONAL DIAGRAM


Measurements according to DIN IEC 268-5



This equipment is designed and manufactured to conform to the following EU Directives:

Electromagnetic Compatibility (EMC):	2014/30/EU
Low Voltage:	2014/35/EU
Restriction of Hazardous Substances (RoHS):	2011/65/EU & 2015/863/EU

Manufacturer

Application Solutions (Safety and Security) Limited
 Unit 17 - Cliffe Industrial Estate - Lewes - East Sussex - BN8 6JL - U.K.
 Tel: +44(0)1273 405411

www.asl-control.co.uk

All rights reserved.

Information contained in this document is believed to be accurate, however no representation or warranty is given and Application Solutions (Safety and Security) Limited assumes no liability with respect to the accuracy of such information.



Assessed to ISO 9001
LPCB Cert No: C1043