

EN54 PENDANT CEILING SPEAKER

- 20W 100V LOUDSPEAKER
- 6.5" (165MM)
- PENDANT MOUNTING
- WEATHERPROOF TO IP35
- METAL CHASSIS
- EXCELLENT SOUND QUALITY
- FULLY CERTIFIED TO EN54-24



OVERVIEW

The SPCP-20W-65-EN54 is a 20W 100V pendant ceiling mount loudspeaker. It has a 6.5" (165mm) full-range loudspeaker chassis providing excellent sound quality with speech and background music. Certified to EN54-24. The speaker is fitted with a 100V transformer which has five power adjustment tapings of 20W, 15W, 10W, 5W and 2.5W. Low impedance operation is also possible.

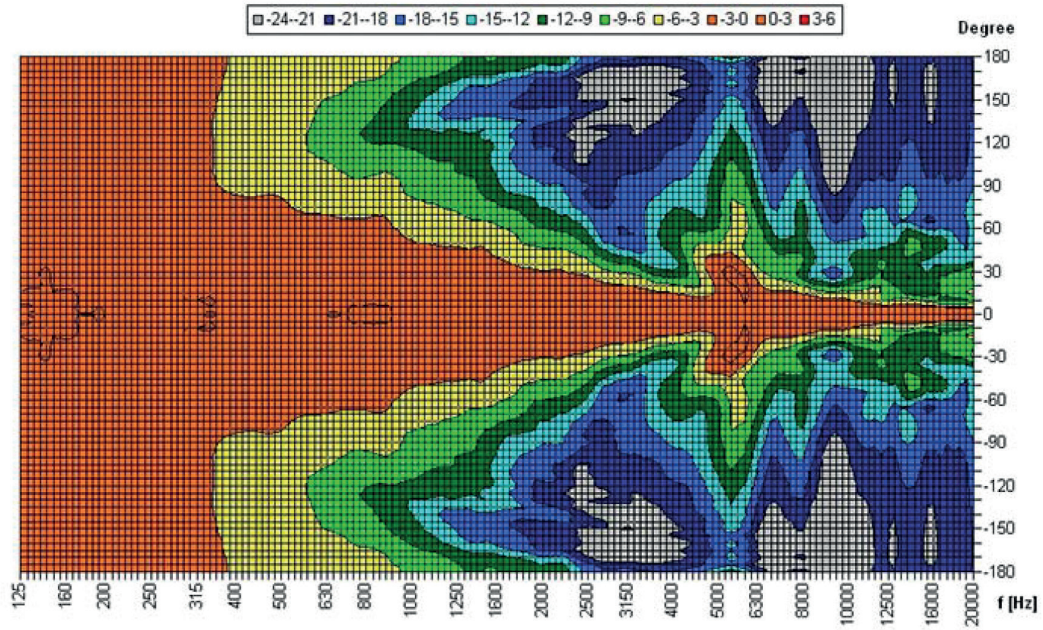
The SPCP-20W-65-EN54 has a sturdy, UV-resistant ABS housing rated to UL94-V0, with an ingress protection rating of IP35, and is coloured to match RAL9016 'Traffic White'. However, the speakers can be supplied in any four digit RAL or NCS colour, as a special order.

The 100V loudspeaker line connection is provided via a 5m long 5-core cable, which is terminated to the 100V loudspeaker line site cabling using a two-pin ceramic block, housed within the speaker's ceiling mounting rose. For additional reliability a thermal fuse is provided and the speaker chassis is damp-resistant.

The loudspeaker is optionally available with a DC blocking capacitor fitted, in order to provide compatibility with DC loudspeaker line monitoring systems. The part number for this DC monitoring compatible version is SPCP-16W-50-EN54-DC.

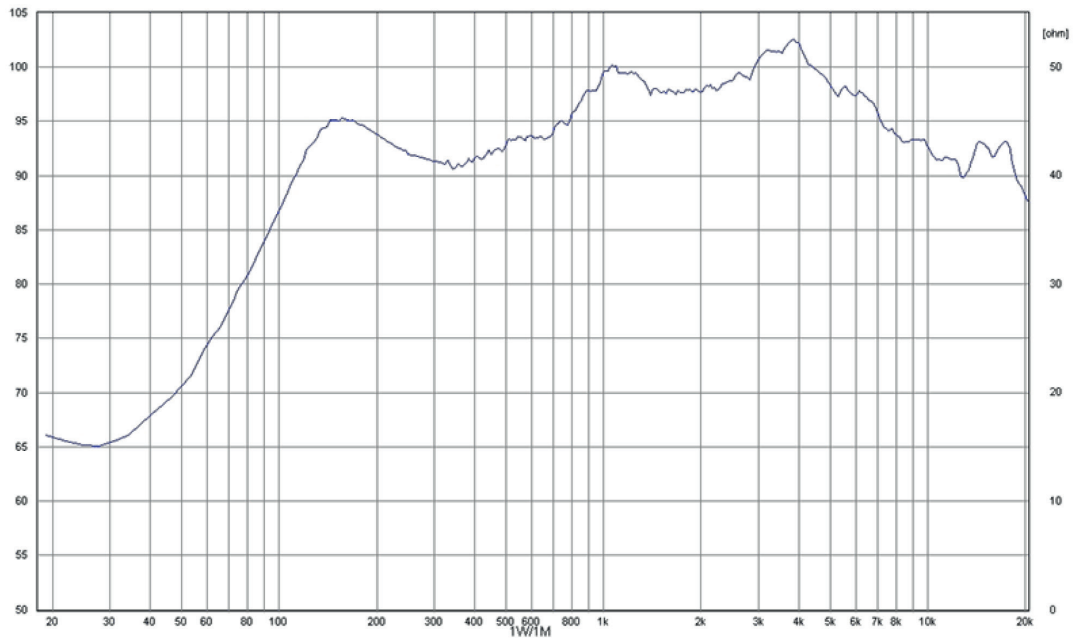
EASE data is available for this speaker on request.

POLAR DIAGRAM



Parameters: Cyclic Move: 0° ; Symmetry: average sym ; Freq.Smooth: 1/3 Oct ; Ang.Resol.: 5° ; Rel. to: 0° Axis 0°

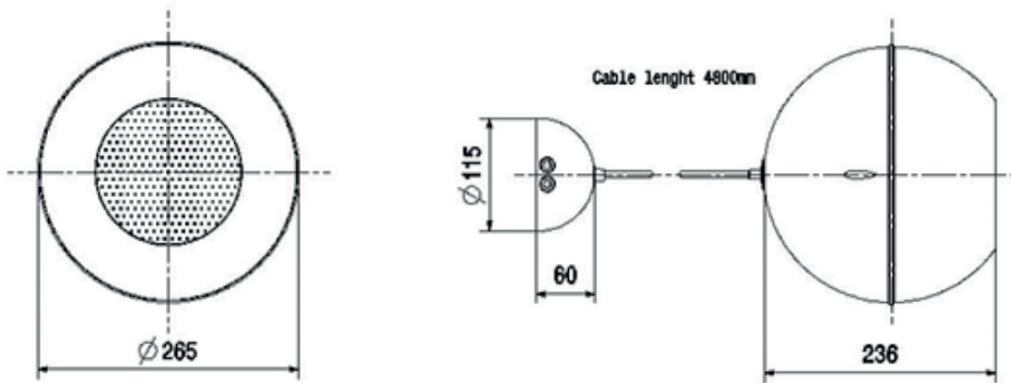
FREQUENCY RESPONSE DIAGRAM



PRODUCT ATTRIBUTES

Description	SPCP-20W-65-EN54
Power	20 / 15 / 10 / 5 / 2.5 (8)W
Impedance (100V)	500 / 667 / 1000 / 2000 / 4000 ohm
Frequency Range	128 - 17,900 Hz
Frequency Response	83 - 23,500 Hz
SPL 1W/1m, peak	100.8 dB
SPL , 1W/4m, peak	88.8 dB
SPL Pmax/4m, peak	101.8 dB
Sensitivity EN54-24, 1W/4m	79.5 dB
Sensitivity IEC 268-5, 1W/1m	91.5 dB
Dispersion -6dB, 500Hz	360°
Dispersion -6dB, 1KHz	163°
Dispersion -6dB, 2KHz	90°
Dispersion -6dB, 4KHz	40°
Dimensions	260 x 245mm
IP Rating	IP35
Weight (net)	2.20 kg
Temperature range	-20 / +80 °C
Mounting	Mounting hook
Connector	2-pin ceramic block
Maximum cable cross section	8mm ²
Max. cable cross section loop	2 x 2mm ²
Colour	RAL 9016

DIMENSIONAL DIAGRAM



Measurements according to DIN IEC 268-5

RoHS compliant (2011/65/EU)



This equipment is designed and manufactured to conform to the following EU Directives:
 Electromagnetic Compatibility (EMC): 2014/30/EU
 Low Voltage: 2014/35/EU
 Restriction of Hazardous Substances (RoHS): 2011/65/EU

Manufacturer:

Application Solutions (Safety and Security) Limited
 Unit 17 - Cliffe Industrial Estate - Lewes - East Sussex - BN8 6JL - U.K.

Tel: +44 (0) 1273 405411

www.asl-control.co.uk

All rights reserved.

Information contained in this document is preliminary, no representation or warranty is given and Application Solutions (Safety and Security) Limited assumes no liability with respect to the accuracy of such information.



Assessed to ISO 9001
 LPCB Cert No: C1043