

EN54 CEILING SPEAKER

- 10W 100V LOUDSPEAKER
- SIZE 6.5" (165MM)
- SURFACE MOUNT
- EXCELLENT SOUND QUALITY
- QUICK AND EASY MOUNTING
- VANDAL AND SHOCK-RESISTANT METAL ENCLOSURE TO IK08
- SPEAKER CHASSIS IMPREGNATED AGAINST WETNESS
- ENVIRONMENTAL INGRESS PROTECTION TO IP21C
- CERAMIC BLOCK CONNECTOR WITH THERMAL FUSE
- FIREDOME
- COMPLIANT TO BS 5839-8
- FULLY CERTIFIED TO EN54-24



OVERVIEW

The SPCS-10W-65-EN54 is a 10W 100V surface mount ceiling loudspeaker, which has a 6.5" (165mm) full-range chassis providing excellent sound quality with speech and background music. The loudspeaker is fully certified to EN 54-24 and is also compliant to the requirements of BS 5839-8. The loudspeaker is fitted with a 100V transformer which has four power adjustment tapings of 10W, 6W, 3W and 1.5W.

The SPCS-10W-65-EN54 has a powder coated metal housing and grille, with the high quality finish giving good long-term protection and resistance to corrosion.

The loudspeaker's housing has environmental ingress protection rated to IP21C and is also vandal and shock-resistant to IK code IK08.

As standard the loudspeaker is coloured to match RAL9010 'Pure White', however they can be supplied in any four-digit RAL or NCS colour, as a special order.

The 100V loudspeaker line cabling is connected by means of a two-pin ceramic block. For additional reliability a thermal fuse is provided and the loudspeaker chassis is damp-resistant.

The loudspeaker is optionally available with a DC blocking capacitor fitted, in order to provide compatibility with DC loudspeaker line monitoring systems. The part number for this DC monitoring compatible version is SPCS-10W-65-EN54-DC.

EASE data is available for this speaker on request.

PRODUCT ATTRIBUTES

Power Tappings 10W / 6W / 3W / 1.5W

Frequency Range 290 – 23,400 Hz

Frequency Response 230 – 24,000 Hz

SPL 1W / 1m, peak 102.2 dB

SPL 1W / 4m, peak 90.2 dB

SPL Pmax / 4m, peak 100.2 dB

Sensitivity EN54-24, 1W / 4m 81 dB

Dispersion (-6dB, 500Hz) 180°

Dispersion (-6dB, 1KHz) 180°

Dispersion (-6dB, 2KHz) 105°

Dispersion (-6dB, 4KHz) 50°

Temperature Range -10 / +55 °C

Dimensions Ø170 x 75 mm

Weight (net) 1.23 kg

Colour RAL 9010 'Pure White'

Connector 2-pin ceramic block

Mounting Screws

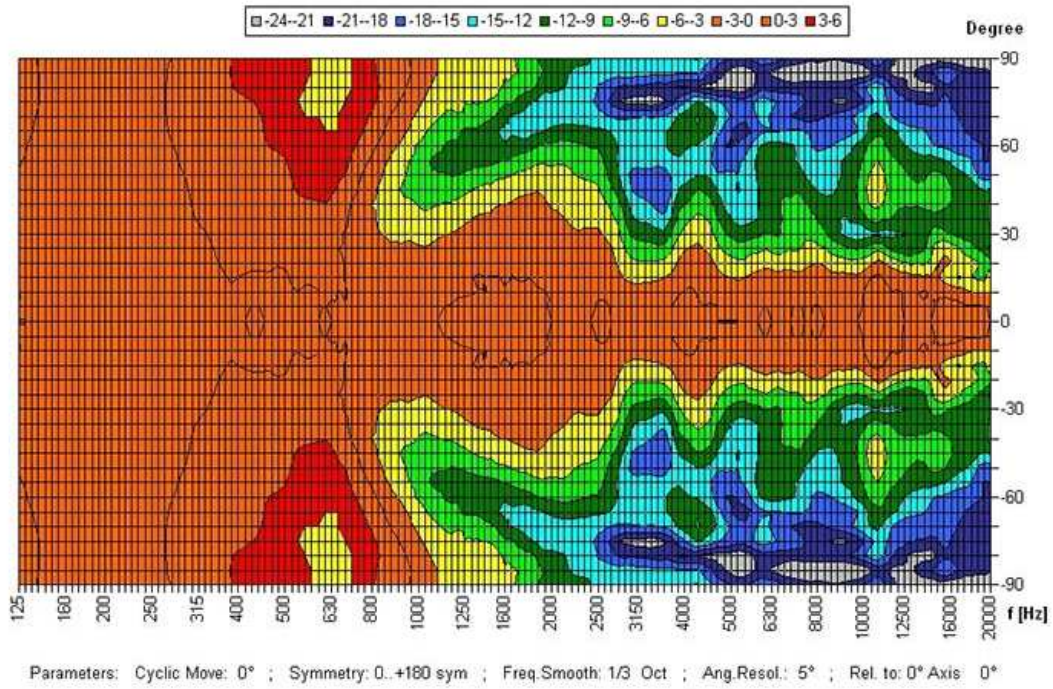
IP Rating IP21

Packing Unit 12

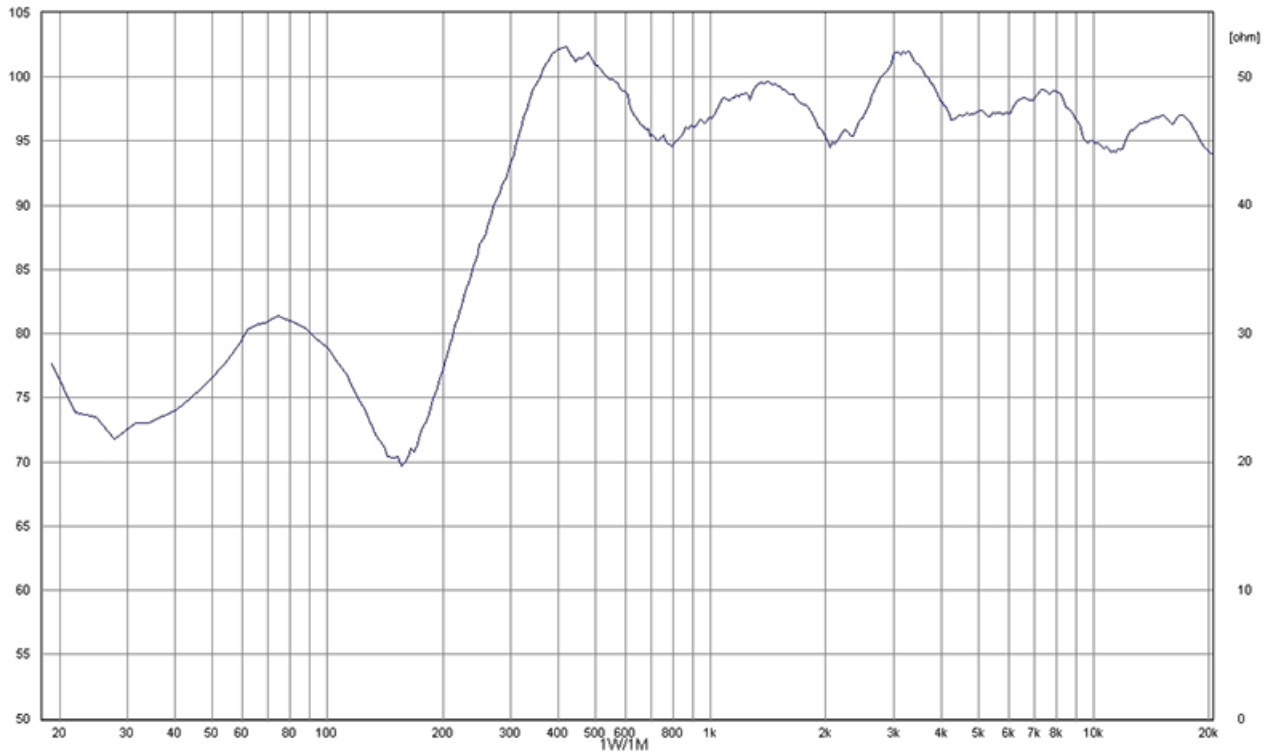
Maximum cable cross section 8mm²

Maximum cable cross section loop 2 x 2mm²

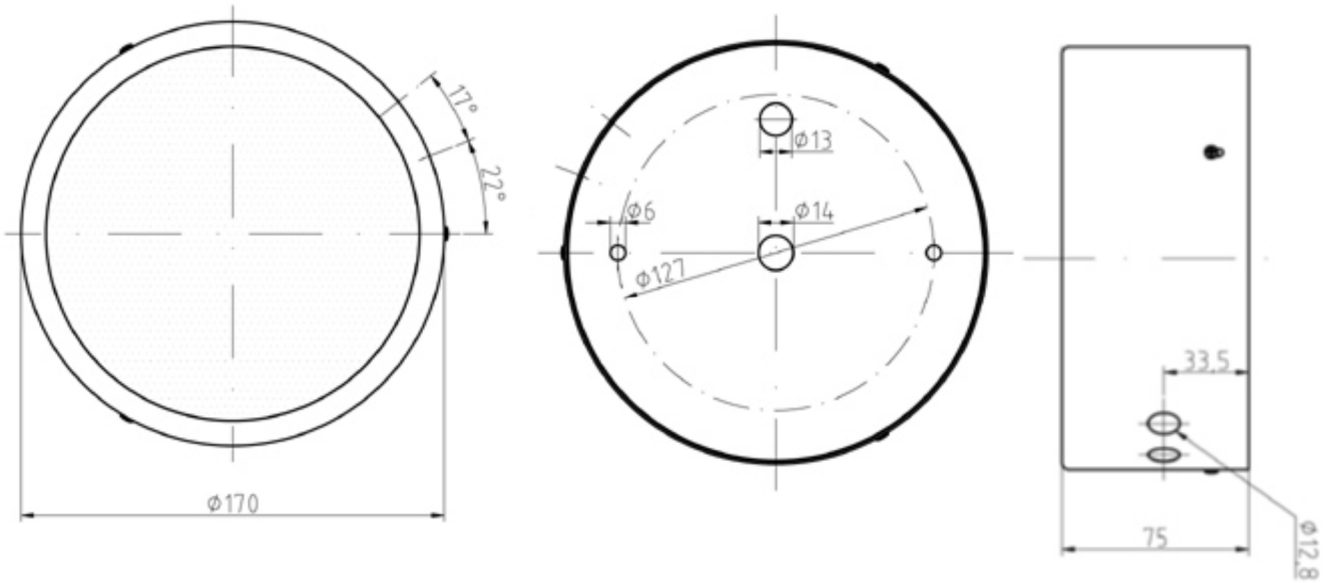
POLAR DIAGRAM



FREQUENCY RESPONSE DIAGRAM



DIMENSIONAL DIAGRAMS



ADDITIONAL PICTURES



Measurements according to DIN IEC 268-5

RoHS complaint (2011/65/EU)



This equipment is designed and manufactured to conform to the following EU Directives:
 Low Voltage: 2014/35/EU
 Restriction of Hazardous Substances (RoHS): 2011/65/EU & 2015/863/EU

Manufacturer

Application Solutions (Safety and Security) Limited
 Unit 17 - Cliffe Industrial Estate - Lewes - East Sussex - BN8 6JL - U.K.
 Tel: +44(0)1273 405411

www.asl-control.co.uk



Assessed to ISO 9001
 LPCB Cert No: C1043

All rights reserved.
 Information contained in this document is believed to be accurate, however no representation or warranty is given and Application Solutions (Safety and Security) Limited assumes no liability with respect to the accuracy of such information.