

EN 54 WEATHERPROOF HORN SPEAKER

- 100W 100V Loudspeaker
- Size 48"x 33"x17" (1228 x 832 x 413mm)
- High Sound Pressure Level
- Excellent Sound Quality
- Indoor or Outdoor Use, Including Tunnels
- Weatherproof to IP65
- UL 94-V0 Speaker Housing
- Thermal Fuse and Ceramic Terminals
- Certified to EN 54-24



OVERVIEW

The SPHW-100W-480-EN54 100V weatherproof horn loudspeaker is suitable for indoor or outdoor use in Voice Alarm and Public Address applications. It is built to withstand corrosive atmospheric contaminants, high moisture levels and temperature extremes, and is suitable for use in environments such as tunnels.

The horn provides an enormous sound pressure level, providing a maximum average SPL of at least 135dB Pmax/1m which enables intelligible voice announcements over a large area using a minimum number of loudspeakers.

The SPCW-100W-480-EN54 has an asymmetric hyperbolic horn geometry; a very balanced frequency response; a very low distortion (using a high quality 100W horn driver with a high performance CCAR voice coil) and can make intelligible Voice Alarm and Public Address announcements over distances of 90 to 300 metres.

The loudspeaker housing for the horn and driver cover are made from an UL 94-V0 flame retardant and impact resistant plastic, coloured RAL 7023 Concrete Grey, with rust-free stainless steel fastenings.

Two mounting kit options are available for installing the loudspeaker to ceilings, both containing high quality V4A/A4 Austenitic Stainless Steel Brackets and Screws. The SPAC-V4A-HW4 kit includes 4 Brackets. The SPAC-V4A-HWP kit includes 3 pieces which are assembled to create a premium speaker bracket which can be installed by one person. Both kits include M8x20 screws to fix the speaker to the brackets.

No additional equalizer is needed to ensure the speaker's frequency response meets the requirements of the EN 54-24 standard.

The recommended settings of EQ / DSP when using a STIPA test signal at maximum load are:
High pass (HP) 300 Hz to 400 Hz with 12 dB slew rate (Butterworth)

Enhanced Acoustic Simulator for Engineers (EASE) data for this loudspeaker is available on request.

PRODUCT ATTRIBUTES

Power Tappings	100W / 50W / 25W
Impedance	100 / 200 / 400 Ω
Frequency Range	280 - 9,000 Hz
Frequency Response	250 – 10,000 Hz
SPL 1W / 1m, peak	119.0 dB
SPL 1W / 4m, peak	107.0 dB
SPL Pmax / 4m, peak	127.0 dB
SPL, rated noise power / 4m	119.0 dB
Sensitivity EN 54-24, 1W / 4m	101.9 dB
Sensitivity IEC 268-5, 1W / 1m	113.9 dB
Dispersion (-6dB, 500Hz) Horizontal / Vertical Plane*	58° / 35°
Dispersion (-6dB, 1KHz) Horizontal / Vertical Plane*	35° / 25°
Dispersion (-6dB, 2KHz) Horizontal / Vertical Plane*	40° / 20°
Dispersion (-6dB, 4KHz) Horizontal / Vertical Plane*	54° / 15°
Temperature Range	-20 / +75 °C
Dimensions	Size 48" x 33" x 17" (1228 x 832 x 413mm)
Weight (net)	16.0 kg
Colour	RAL 7023 (Concrete Grey)
Connector	4-pin ceramic block
Mounting	SPAC-V4A-WH4 4 bracket mounting kit or SPAC-V4A-WHP Premium bracket mounting kit
Verified IP Rating / EN 54 Speaker Type & Minimum Rating	IP65 / Type B (Outdoors), minimum rating IP33C
Packing Unit	1

*** EN 54-24 Definitions for Speaker Reference Axis, Point, Plane + Horizontal & Vertical Planes:**

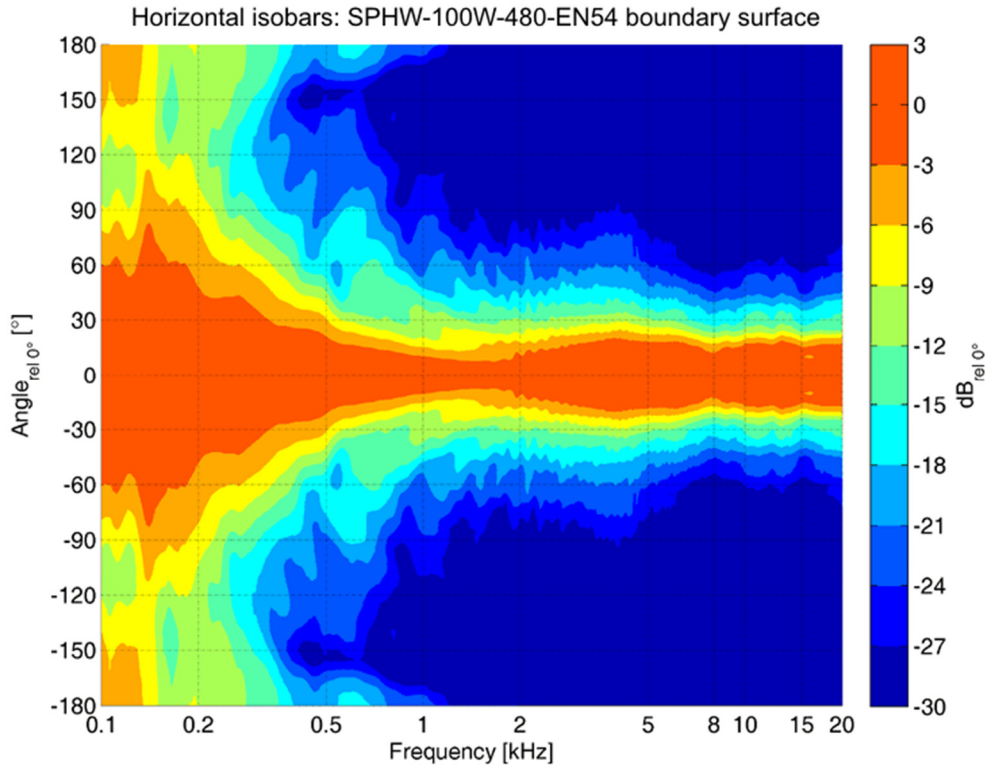
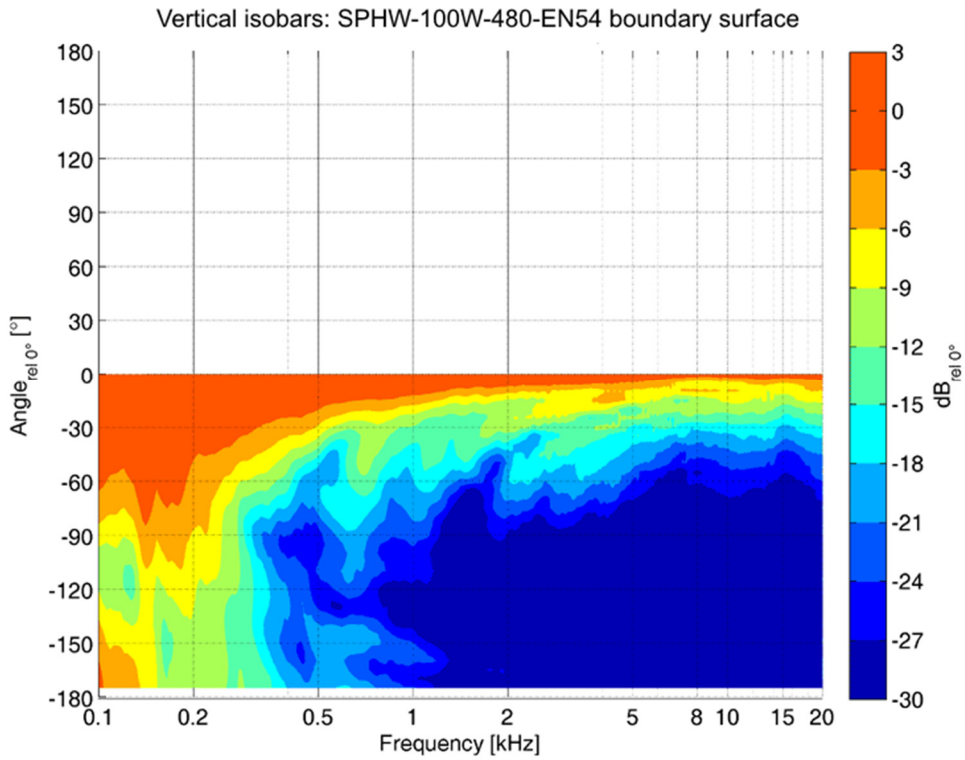
- Reference Axis: Axis is through the centre of the speaker grille surface and is perpendicular to the grille surface.
- Reference Plane: Plane is across the front of the speaker grille surface and is perpendicular to the reference axis.
- Horizontal Plane: Plane contains the reference axis and is perpendicular to the reference plane.
- Vertical Plane: Plane contains the reference axis and is perpendicular to the reference plane.
- Reference Point: Point is at the centre of the front of the speaker grille surface where all the above intersect.

All measurements in the table above relate to the Reference Axis unless otherwise stated

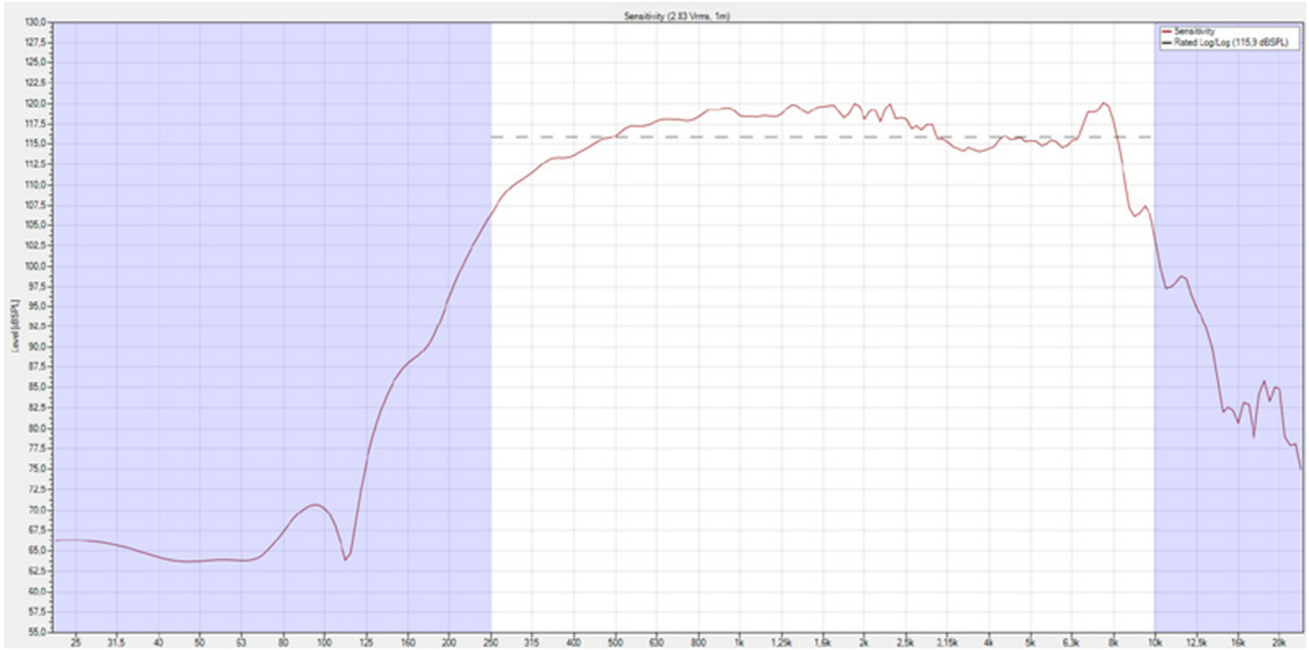
EN 54-24 Annex A, Measurement Environments:

Flush-mounted loudspeakers e.g. ceiling loudspeakers, shall be measured under half-space free field conditions.

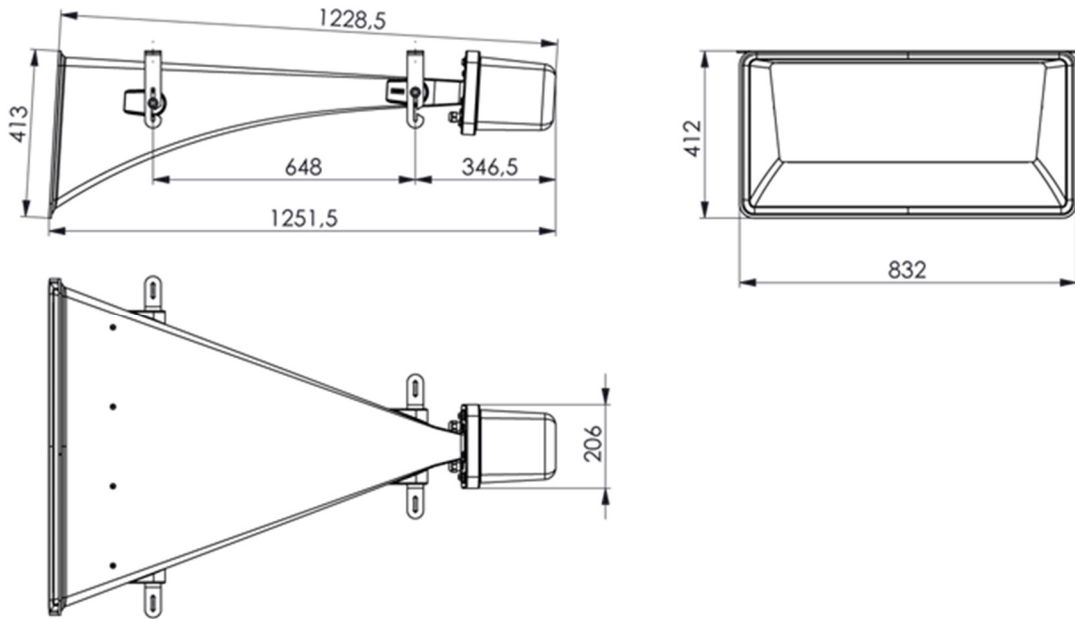
All other speakers shall be measured under free-field conditions or in a ground plane arrangement that simulates a free-field condition.

HORIZONTAL POLAR DIAGRAM

VERTICAL POLAR DIAGRAM


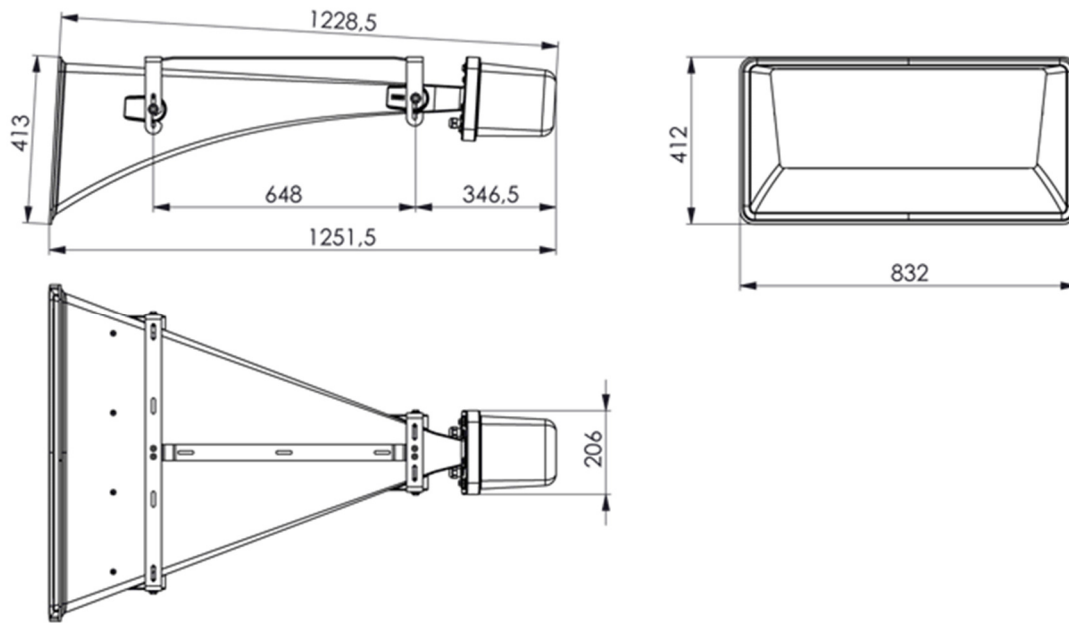
FREQUENCY RESPONSE DIAGRAM



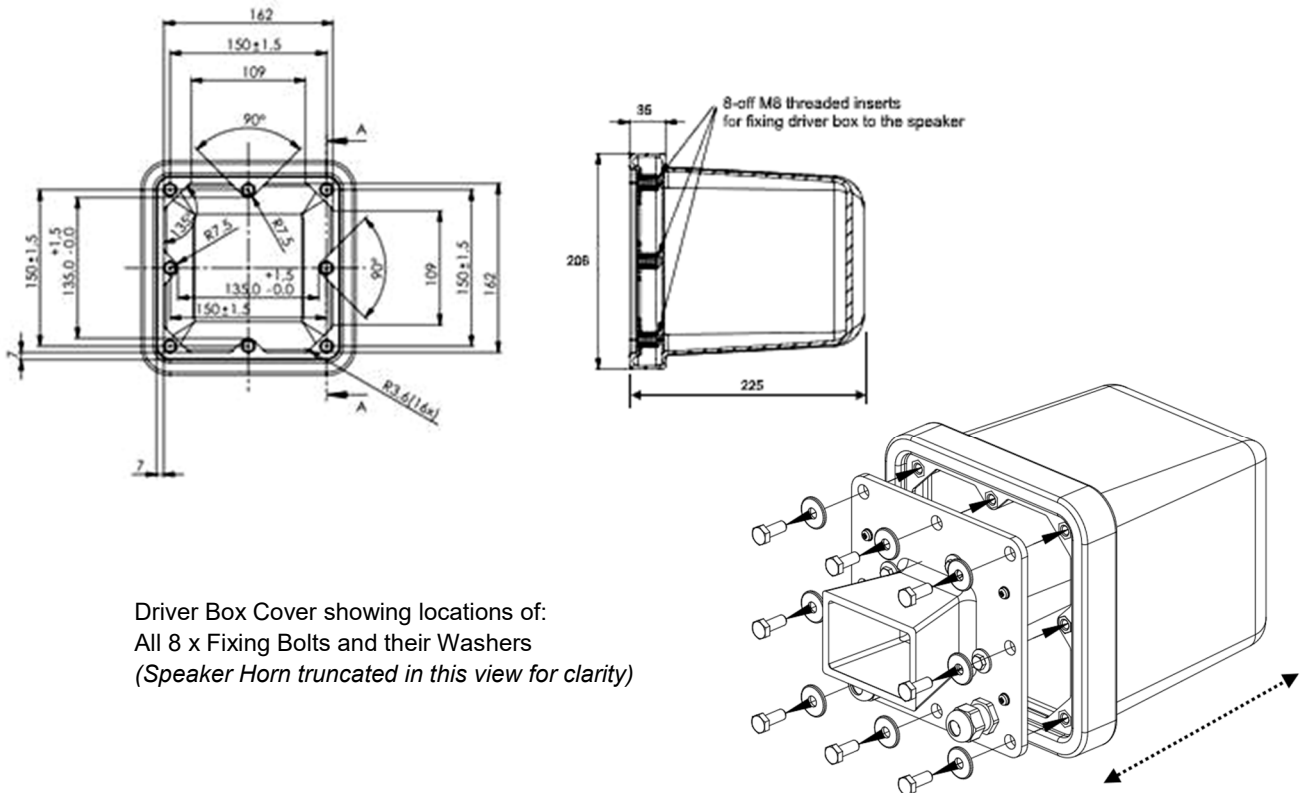
DIMENSIONAL DIAGRAM: SPHW-100W-480-EN54 WITH SPAC-V4A-HW4 (4-BRACKET MOUNTING SET)



DIMENSIONAL DIAGRAM: SPHW-100W-480-EN54 WITH SPAC-V4A-HWP (PREMIUM BRACKET MOUNTING KIT)



DIMENSIONAL DIAGRAM: DRIVER BOX COVER DETAIL & EXPLODED VIEW



Driver Box Cover showing locations of:
All 8 x Fixing Bolts and their Washers
(Speaker Horn truncated in this view for clarity)

CE This equipment is designed and manufactured to conform to the following EU Directives:
 Electromagnetic Compatibility (EMC) 2014/30/EU
 Low Voltage: 2014/35/EU
 Restriction of Hazardous Substances (RoHS): 2011/65/EU & 2015/863/EU

Manufacturer

Application Solutions (Safety and Security) Limited
 Unit 17 - Cliffe Industrial Estate - Lewes - East Sussex - BN8 6JL - U.K.
 Tel: +44(0)1273 405411

www.asl-control.co.uk

All rights reserved.

Information contained in this document is believed to be accurate, however no representation or warranty is given and Application Solutions (Safety and Security) Limited assumes no liability with respect to the accuracy of such information.



Assessed to ISO 9001
 LPCB Cert No: 1043