

EN54 MONITOR SPEAKER

- 15W 100V LOUDSPEAKER
- SWIVEL WALL BRACKET MOUNTING
- DISTINCTIVE DESIGN
- EXCELLENT SOUND QUALITY
- INGRESS PROTECTION IP65C
- FULLY CERTIFIED TO EN54-24



OVERVIEW

The SPMO-15W-WT-EN54 is a 15W 100V two-way monitor loudspeaker which has an attractive design, provides excellent sound quality, and is certified to EN54-24. The speaker is fitted with a 100V transformer which has four power adjustment tapings of 15W, 7.5W, 3.75W and 1.8W, plus a low-impedance setting (8ohm).

The SPMO-15W-WT-EN54's impact and UV resistant white ABS body provides good long-term stability, and is sealed to the IP65C environmental standard.

Mounting of the speaker is provided using an easy-mounting swivel bracket, which provides flexibility in the speaker orientation relative to the bracket position. The 100V loudspeaker line connection is provided via a six-way screw terminal, and for additional reliability a thermal fuse is provided and the speaker chassis is damp-resistant.

The loudspeaker is optionally available with a DC blocking capacitor fitted, in order to provide compatibility with DC loudspeaker line monitoring systems. The part number for this DC monitoring compatible version is SPMO-15W-WT-EN54-DC.

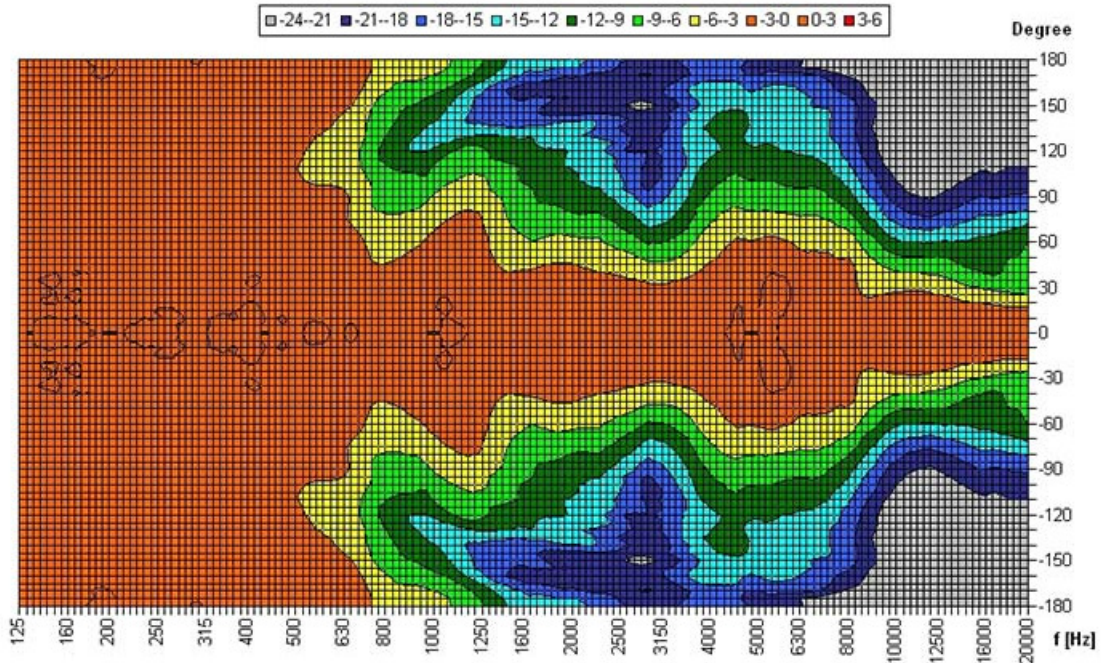
EASE data is available for this speaker on request.

PRODUCT ATTRIBUTES

Power Tappings	15W / 7.5W / 3.75W / 1.8 (8)W
Frequency Range	105 – 23,500 Hz
Frequency Response	82 – 23,500 Hz
SPL 1W / 1m, peak	89.1 dB
SPL 1W / 4m, peak	77.1 dB
SPL Pmax / 4m, peak	88.8 dB
Sensitivity EN54-24, 1W / 4m	69.7 dB
Dispersion (-6dB, 500Hz)	360° (horizontal) 360° (vertical)
Dispersion (-6dB, 1KHz)	186° (horizontal) 186° (vertical)
Dispersion (-6dB, 2KHz)	132° (horizontal) 115° (vertical)
Dispersion (-6dB, 4KHz)	147° (horizontal) 197° (vertical)
Temperature Range	-25 / +80°C
Dimensions	210 x 130 x 120 mm
Weight (net)	1.70 kg
Colour	White
Connector	6-pin screw terminal
Mounting	Swivel bracket
IP Rating	IP65C
Packing Unit	8
Maximum cable cross section	4.9mm ²
Maximum cable cross section loop	2x1.2mm ²

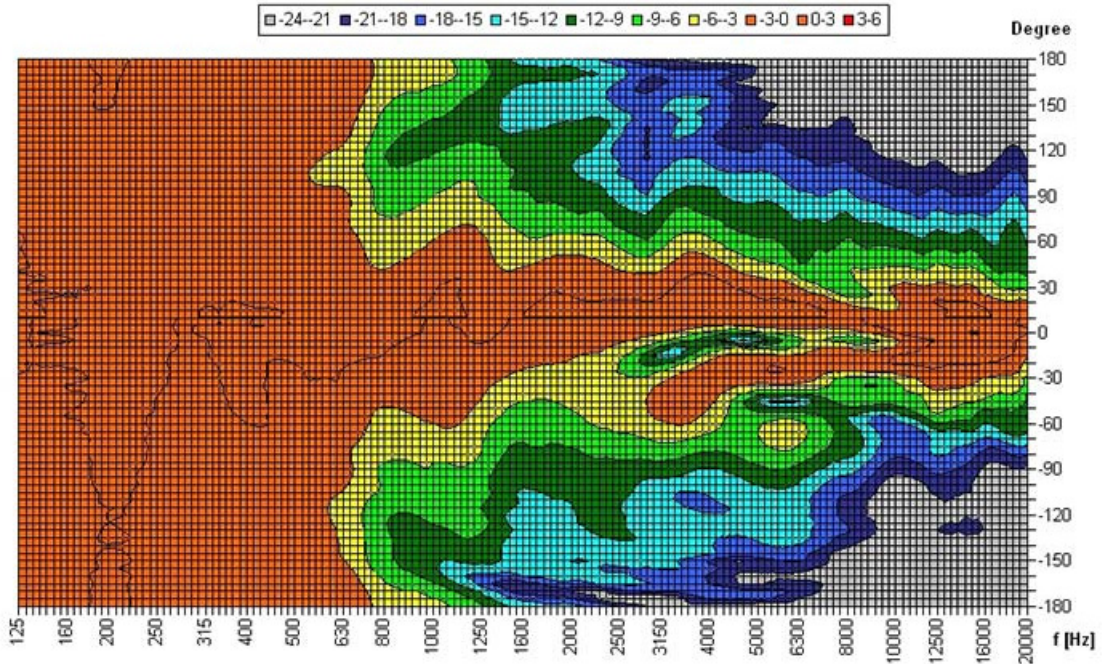
POLAR DIAGRAM

Horizontal Isobars



Parameters: Cyclic Move: 0° ; Symmetry: average sym ; Freq.Smooth: 1/3 Oct ; Ang.Resol.: 5° ; Rel. to: 0° Axis 0°

Vertical Isobars



Parameters: Cyclic Move: 0° ; Symmetry: average sym ; Freq.Smooth: 1/3 Oct ; Ang.Resol.: 5° ; Rel. to: 10° Axis 0°

FREQUENCY RESPONSE DIAGRAM

