

## EN54 MONITOR SPEAKER

- 50W 100V LOUDSPEAKER
- SWIVEL BRACKET MOUNTING
- WEATHERPROOF TO IP65C
- IMPACT RESISTANT ABS
- DISTINCTIVE DESIGN
- EXCELLENT SOUND QUALITY
- FULLY CERTIFIED TO EN54-24



### OVERVIEW

The SPMO-50W-BK-EN54 is a 50W 100V two-way monitor loudspeaker which has an attractive design providing excellent sound quality for speech and background music and is certified to EN54-24. The speaker is fitted with a 100V transformer with four power level adjustment tapings of 50W, 25W, 12.5W and 6.25W. Low impedance operation is also possible.

The SPMO-50W-BK-EN54's impact and UV resistant black ABS body provides good long-term stability, and is sealed to the IP33C environmental standard.

Mounting of the speaker is provided using an easy-mounting swivel bracket, which provides flexibility in the speaker orientation relative to the bracket position. The 100V loudspeaker line connection is provided via a six-way screw terminal, and for additional reliability a thermal fuse is provided and the speaker chassis is damp-resistant.

The loudspeaker is optionally available with a DC blocking capacitor fitted, in order to provide compatibility with DC loudspeaker line monitoring systems. The part number for this DC monitoring compatible version is SPMO-50W-BK-EN54-DC.

EASE data is available for this speaker on request.

**PRODUCT ATTRIBUTES**

Power Tappings 50W / 25W / 12.5W / 6.25W (8ohm)

Frequency Range 63 - 20,100 Hz

Frequency Response 53 - 20,300 Hz

SPL 1W / 1m, peak 88.2 dB

SPL 1W / 4m, peak 76.2 dB

SPL Pmax / 4m, peak 93.1 dB

Sensitivity EN54-24, 1W / 4m 76.7 dB

Sensitivity IEC 268-5, 1W/1m 88.7 dB

Dispersion (-6dB, 500Hz) 194° (h) 185° (v)

Dispersion (-6dB, 1KHz) 152° (h) 114° (v)

Dispersion (-6dB, 2KHz) 97° (h) 103° (v)

Dispersion (-6dB, 4KHz) 64° (h) 43° (v)

Temperature Range -25 / +80 °C

Dimensions 326 x 202 x 192mm

Weight (net) 3.65 kg

Colour Black

Connector 6-pin screw terminal

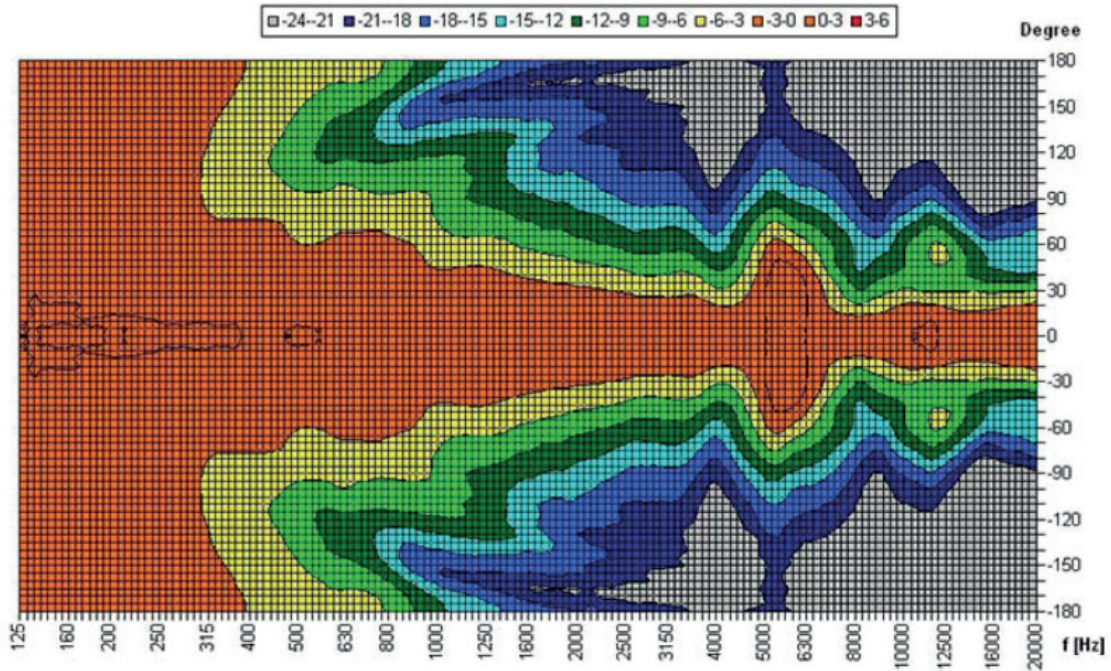
Mounting Swivel Bracket

IP Rating IP65C

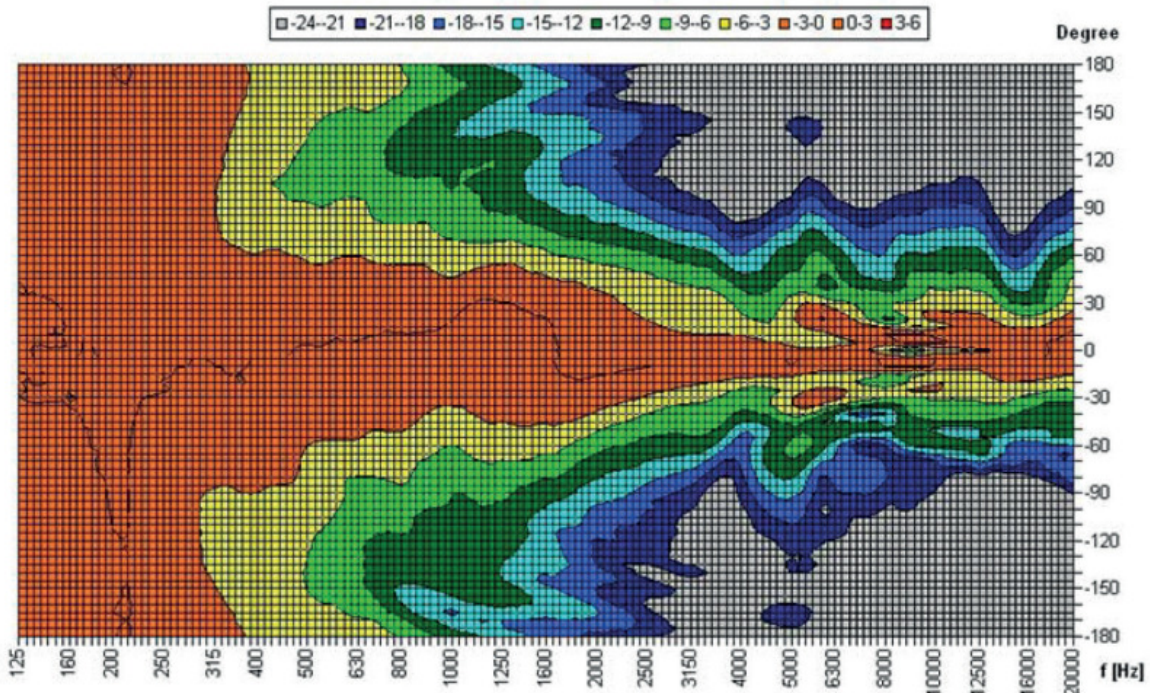
Packing Unit 8

Maximum cable cross section 4.9mm<sup>2</sup>

Maximum cable cross section loop 2 x 1.2mm<sup>2</sup>

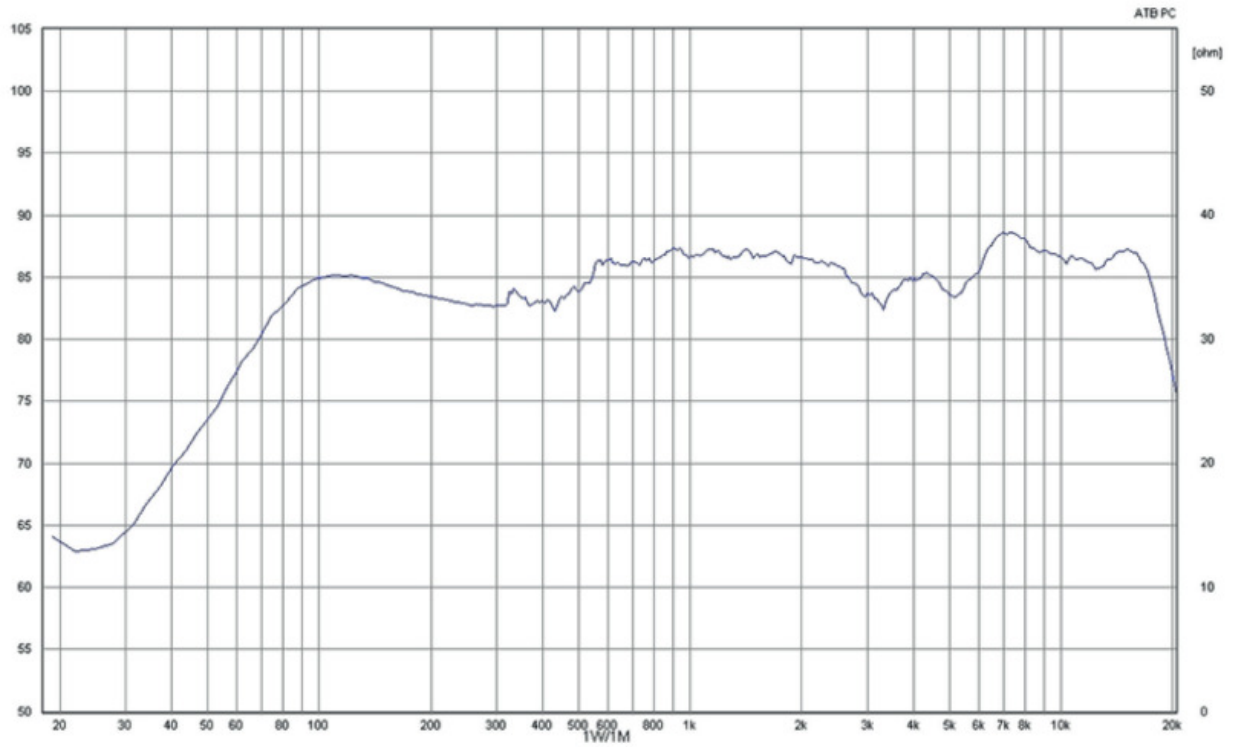
**POLAR DIAGRAM**
**Horizontal Isobars**


Parameters: Cyclic Move: 0° ; Symmetry: average sym ; Freq.Smooth: 1/3 Oct ; Ang.Resol.: 5° ; Rel. to: 0° Axis 0°

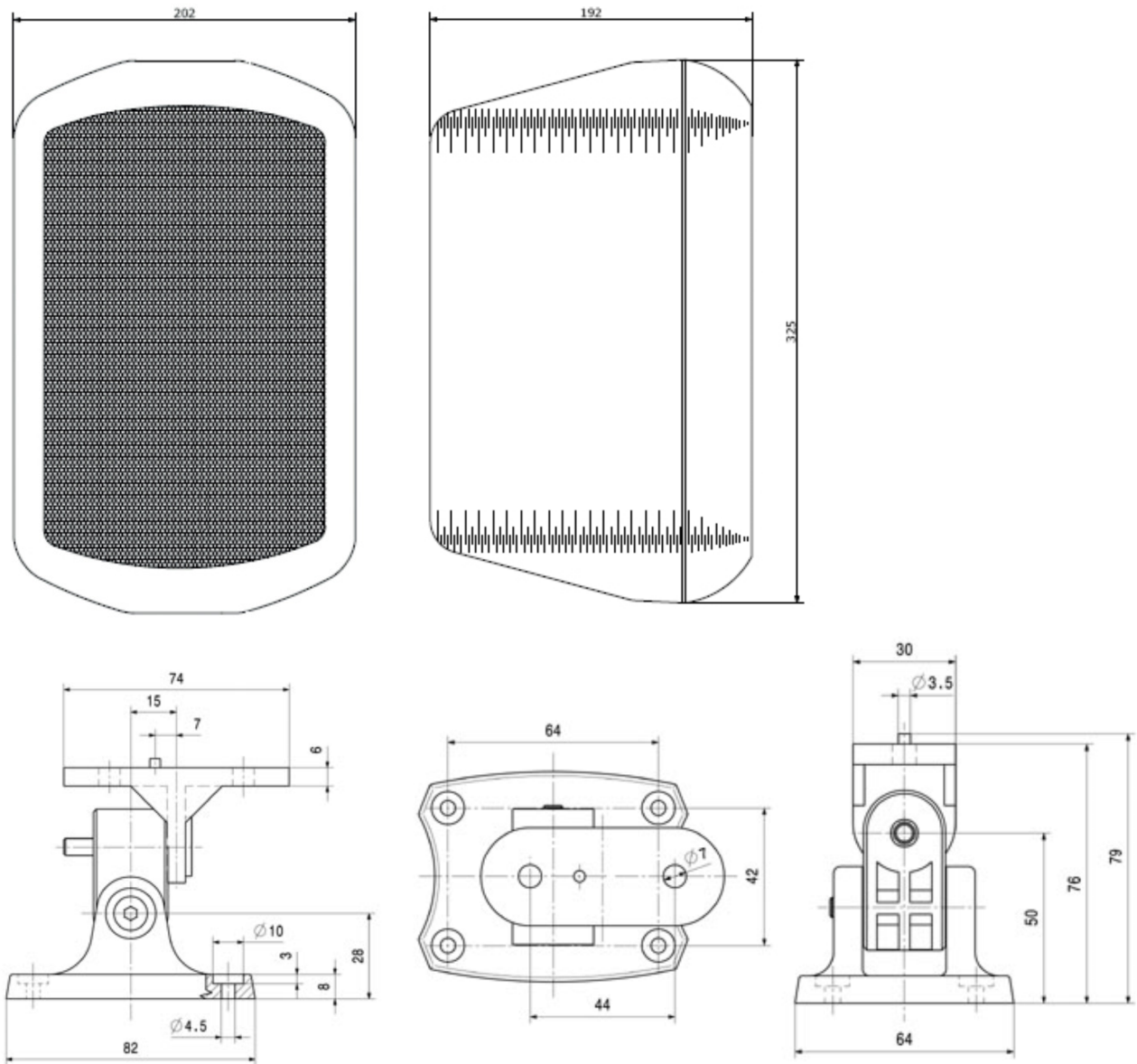
**Vertical Isobars**


Parameters: Cyclic Move: 0° ; Symmetry: no symmetry ; Freq.Smooth: 1/3 Oct ; Ang.Resol.: 5° ; Rel. to: -5° Axis 0°

## FREQUENCY RESPONSE DIAGRAM



**DIMENSIONAL DIAGRAM**



Measurements according to DIN IEC 268-5

RoHS compliant (2011/65/EU)



This equipment is designed and manufactured to conform to the following EU Directives:

Low Voltage: 2014/35/EU  
 Restriction of Hazardous Substances (RoHS): 2011/65/EU & 2015/863/EU

Manufacturer

Application Solutions (Safety and Security) Limited  
 Unit 17 - Cliffe Industrial Estate - Lewes - East Sussex - BN8 6JL - U.K.  
 Tel: +44(0)1273 405411

[www.asl-control.co.uk](http://www.asl-control.co.uk)

All rights reserved.

Information contained in this document is believed to be accurate, however no representation or warranty is given and Application Solutions (Safety and Security) Limited assumes no liability with respect to the accuracy of such information.



Assessed to ISO 9001  
 LPCB Cert No: C1043