

## EN54 WALL SPEAKER

- 6W 100V LOUDSPEAKER
- SIZE 2.5" (66MM)
- FLUSH MOUNT
- ALUMINIUM FRONT PANEL
- SUPERB SOUND COVERAGE
- EXCELLENT SOUND QUALITY
- FULLY CERTIFIED TO EN54-24



### OVERVIEW

The SPRF-06W-25-EN54 is a 6W 100V flush mount loudspeaker which has a 2.5" (66mm) full-range chassis providing superb sound coverage and excellent sound quality with speech and background music, and which is certified to EN54-24. The speaker is fitted with a 100V transformer which has three power tapings of 6W, 3W and 1.5W.

The SPRF-06W-25-EN54 has a sturdy natural coloured aluminium front panel and a high-impact black ABS rear housing, which provides a low resonance sound. The enclosure is ingress protection rated to IP21C.

The speaker is designed to be flush mounted in walls or suitable ceilings. The 100V loudspeaker line cabling is connected by means of a two-pin ceramic block, and for additional reliability a thermal fuse is provided and the speaker chassis is damp-resistant.

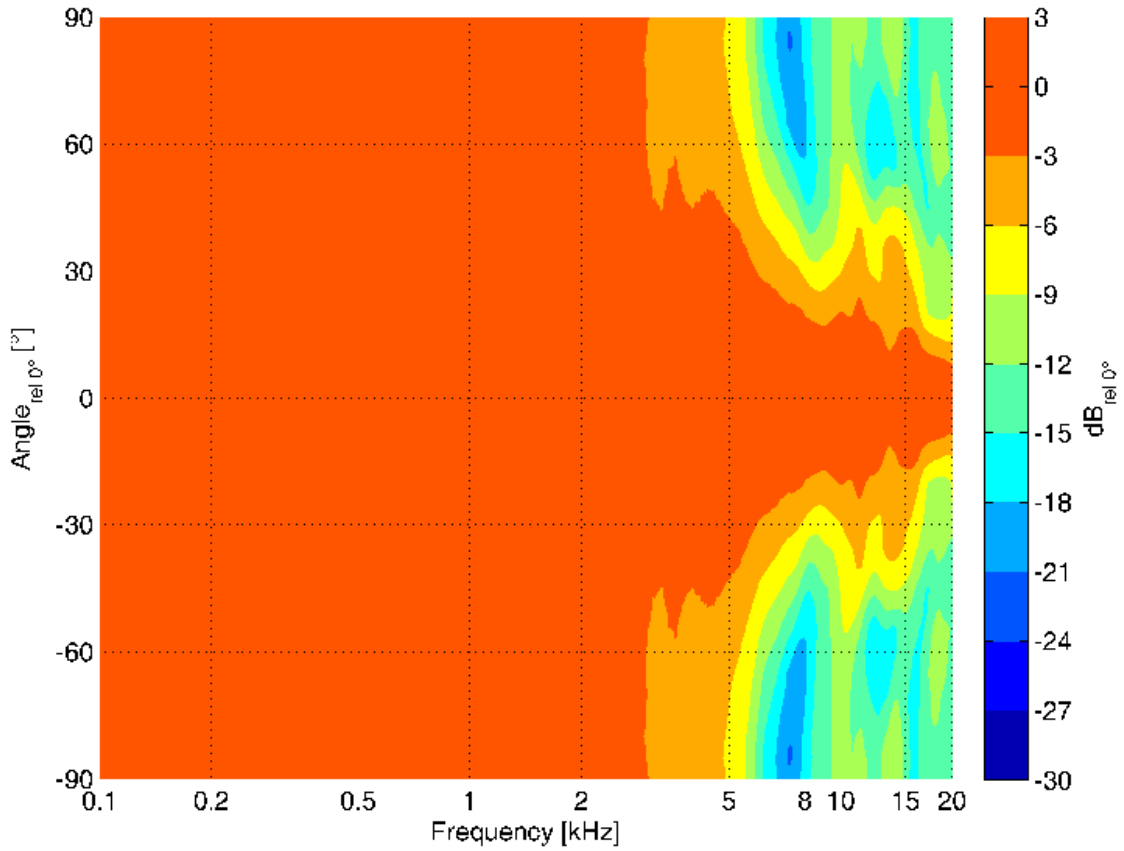
This loudspeaker is optionally available with a DC blocking capacitor fitted, in order to provide compatibility with DC loudspeaker line monitoring systems. The part number for the DC monitoring compatible version is SPRF-06W-25-EN54-DC.

EASE data is available for this speaker on request.

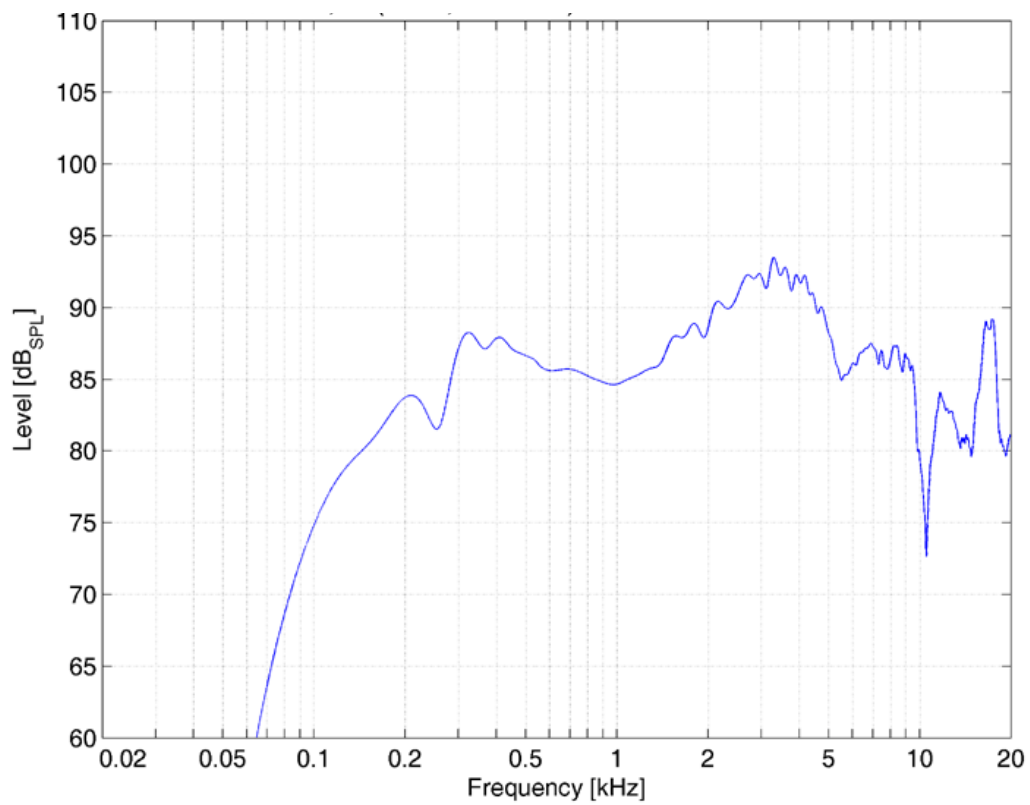
**TECHNICAL DATA**

Power Tappings	6W / 3W / 1.5W
Frequency Range	156 — 20,000 Hz
Frequency Response	119 — 21,700 Hz
SPL 1W / 1m, peak	92.0 dB
SPL , 1W / 4m, peak	80.0 dB
SPL Pmax / 4m, peak	87.7 dB
Sensitivity EN54-24, 1W / 4m	85.0 dB
Dispersion (-6dB, 500Hz)	180° (horizontal) / 180° (vertical)
Dispersion (-6dB, 1KHz)	180° (horizontal) / 180° (vertical)
Dispersion (-6dB, 2KHz)	180° (horizontal) / 180° (vertical)
Dispersion (-6dB, 4KHz)	180° (horizontal) / 180° (vertical)
Dimensions	120 x 120 x 102 mm
IP Rating	IP21
Weight (net)	0.90 kg
Temperature range	-20 / +80 °C
Connector	2-pin ceramic block
Mounting	Flush mounting
Colour	Aluminium

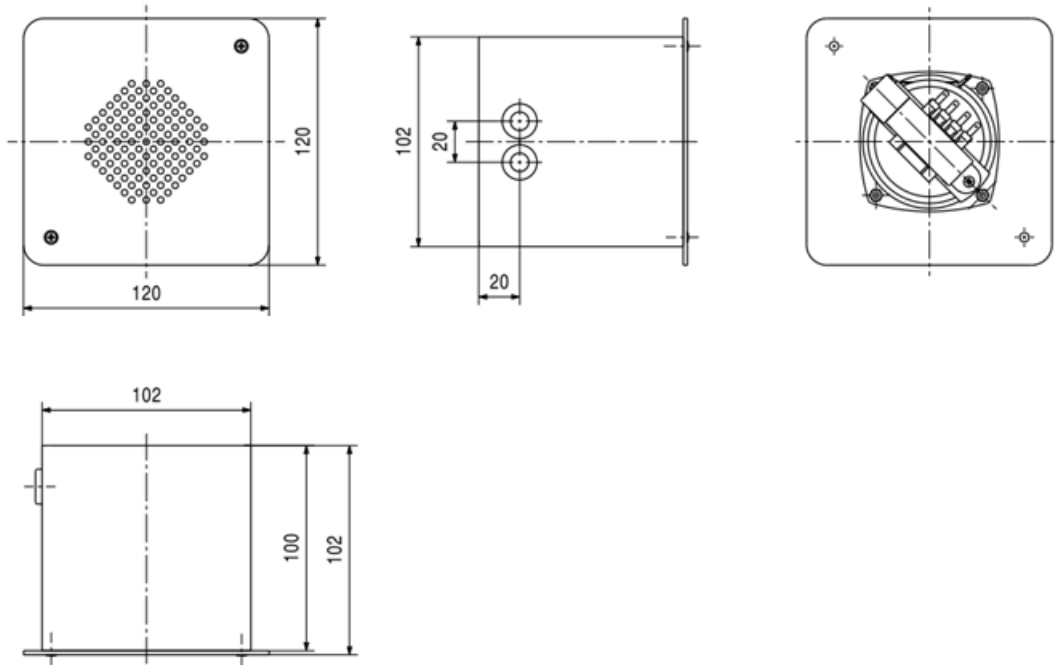
POLAR DIAGRAM



FREQUENCY RESPONSE DIAGRAM



**DIMENSIONAL DIAGRAM**



Measurements according to DIN IEC 268-5

RoHS compliant (2011/65/EU)



This equipment is designed and manufactured to conform to the following EU Directives:

- Electromagnetic Compatibility (EMC): 2014/30/EU
- Low Voltage: 2014/35/EU
- Restriction of Hazardous Substances (RoHS): 2011/65/EU

Manufacturer

Application Solutions (Safety and Security) Limited  
 Unit 17 - Cliffe Industrial Estate - Lewes - East Sussex - BN8 6JL - U.K.  
 Tel: +44(0)1273 405411

[www.asl-control.co.uk](http://www.asl-control.co.uk)

All rights reserved.

Information contained in this document is believed to be accurate, however no representation or warranty is given and Application Solutions (Safety and Security) Limited assumes no liability with respect to the accuracy of such information.



Assessed to ISO 9001  
 LPCB Cert No: C1043