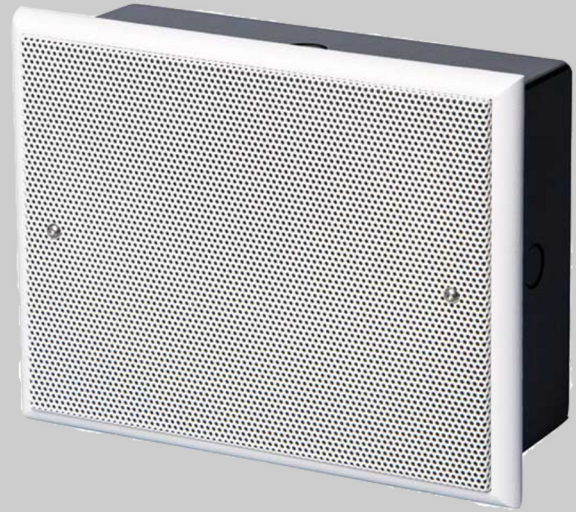


## EN54 WALL SPEAKER

- 6W 100V LOUDSPEAKER
- SIZE 6.5" (165MM)
- FLUSH MOUNT
- SOFTLINE-DESIGN
- WEATHERPROOF TO IP21C
- EXCELLENT SOUND QUALITY
- FULLY CERTIFIED TO EN54-24



### OVERVIEW

The SPRF-06W-65-EN54 is a 6W 100V flush mount loudspeaker which has a 6.5" (165mm) full-range chassis providing excellent sound quality with speech and background music, and which is certified to EN54-24. The speaker is fitted with a 100V transformer which has three power tapings of 6W, 3W and 1.5W.

The SPRF-06W-65-EN54 has a high-density, shock-resistant white ABS front panel which provides a low resonance sound. The speaker has a powder coated metal grille, with the high quality powder coated finish giving good long-term protection and resistance to corrosion. The enclosure is ingress protection rated to IP21C.

The speaker is designed to be flush mounted in walls or suitable ceilings. The 100V loudspeaker line cabling is connected by means of a two-pin ceramic block, and for additional reliability a thermal fuse is provided and the speaker chassis is damp-resistant.

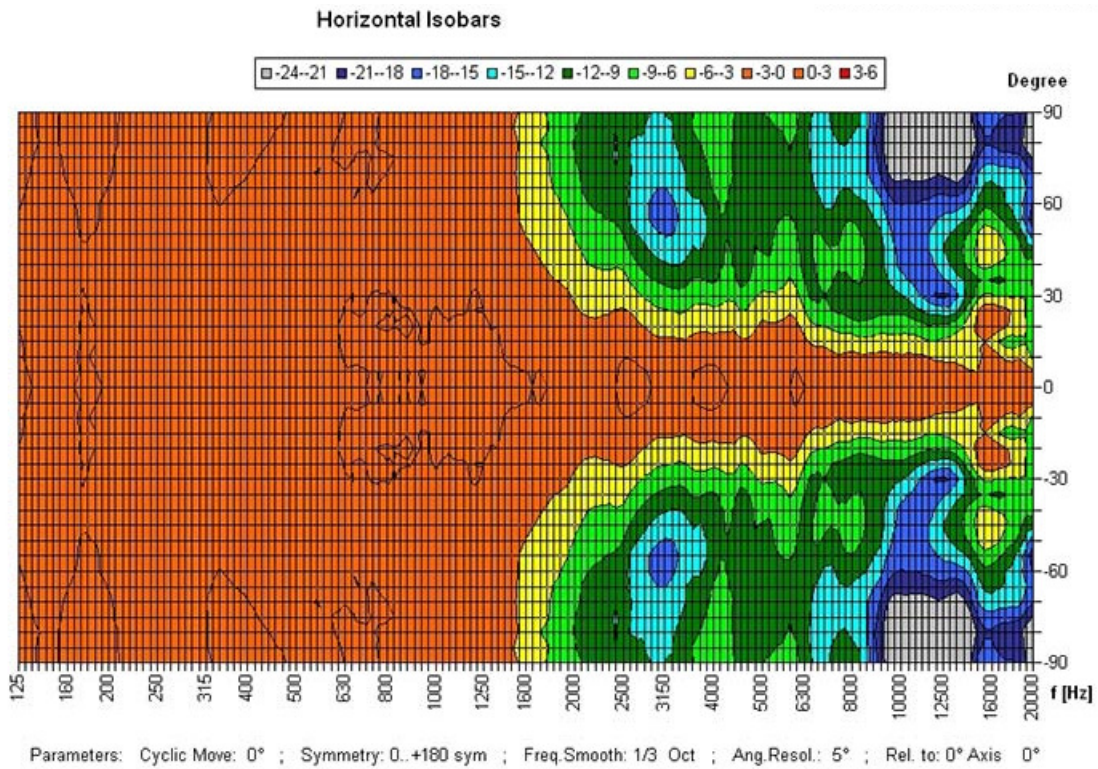
The loudspeaker is optionally available with a DC blocking capacitor fitted, in order to provide compatibility with DC loudspeaker line monitoring systems. The part number for this DC monitoring compatible version is SPRF-06W-25-EN54-DC.

EASE data is available for this speaker on request.

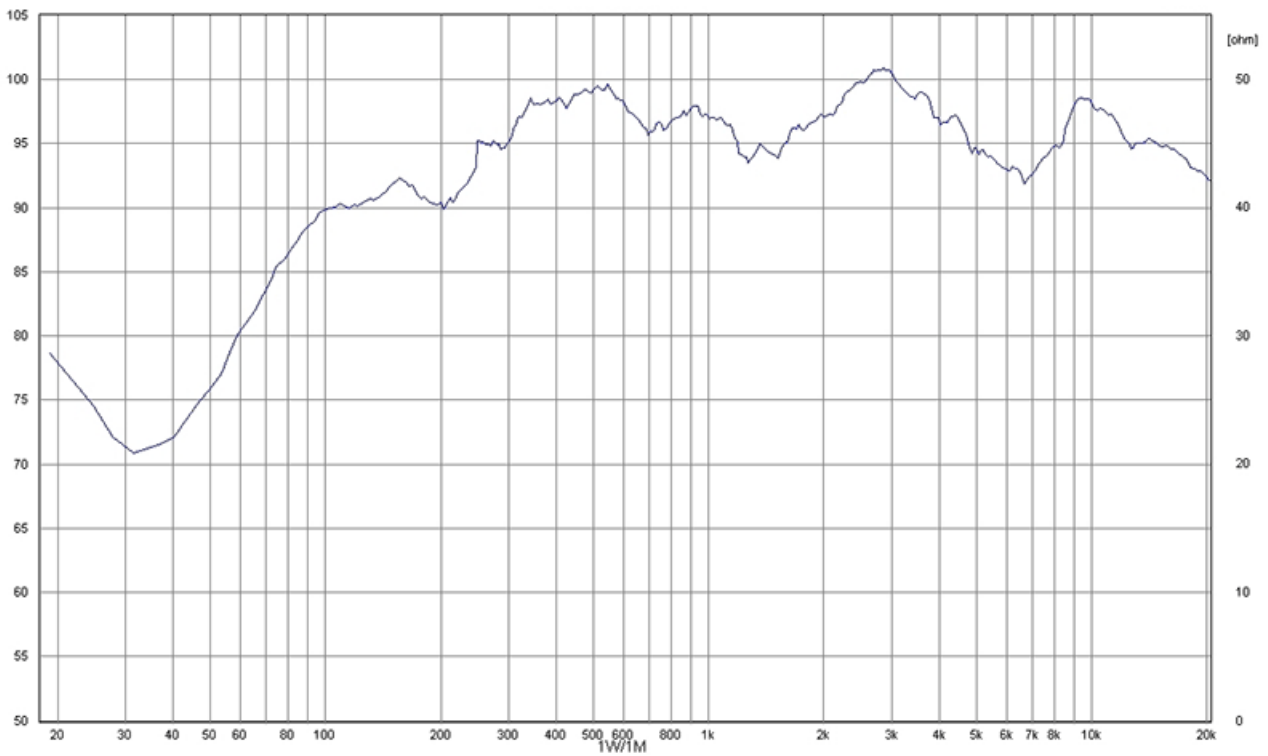
**TECHNICAL DATA**

Power Tappings	6W / 3W / 1.5W
Impedance (100V)	1667 / 3333 / 6667 ohm
Frequency Range	93 — 23,500 Hz
Frequency Response	72 — 23,500 Hz
SPL 1W / 1m, peak	99.1 dB
SPL , 1W / 4m, peak	87.1 dB
SPL Pmax / 4m, peak	94.8 dB
Sensitivity EN54-24, 1W / 4m	79.6 dB
Dispersion (-6dB, 500Hz)	180° (horizontal) / 180° (vertical)
Dispersion (-6dB, 1KHz)	180° (horizontal) / 170° (vertical)
Dispersion (-6dB, 2KHz)	120° (horizontal) / 130° (vertical)
Dispersion (-6dB, 4KHz)	50° (horizontal) / 60° (vertical)
Dimensions	255 x 195 x 88 mm
IP Rating	IP21
Weight (net)	1.40 kg
Temperature range	-20 / +80 °C
Connector	2-pin ceramic block
Mounting	Flush mounting
Maximum cable cross section	8mm <sup>2</sup>
Maximum cable cross section loop	2 x 2mm <sup>2</sup>
Colour	White

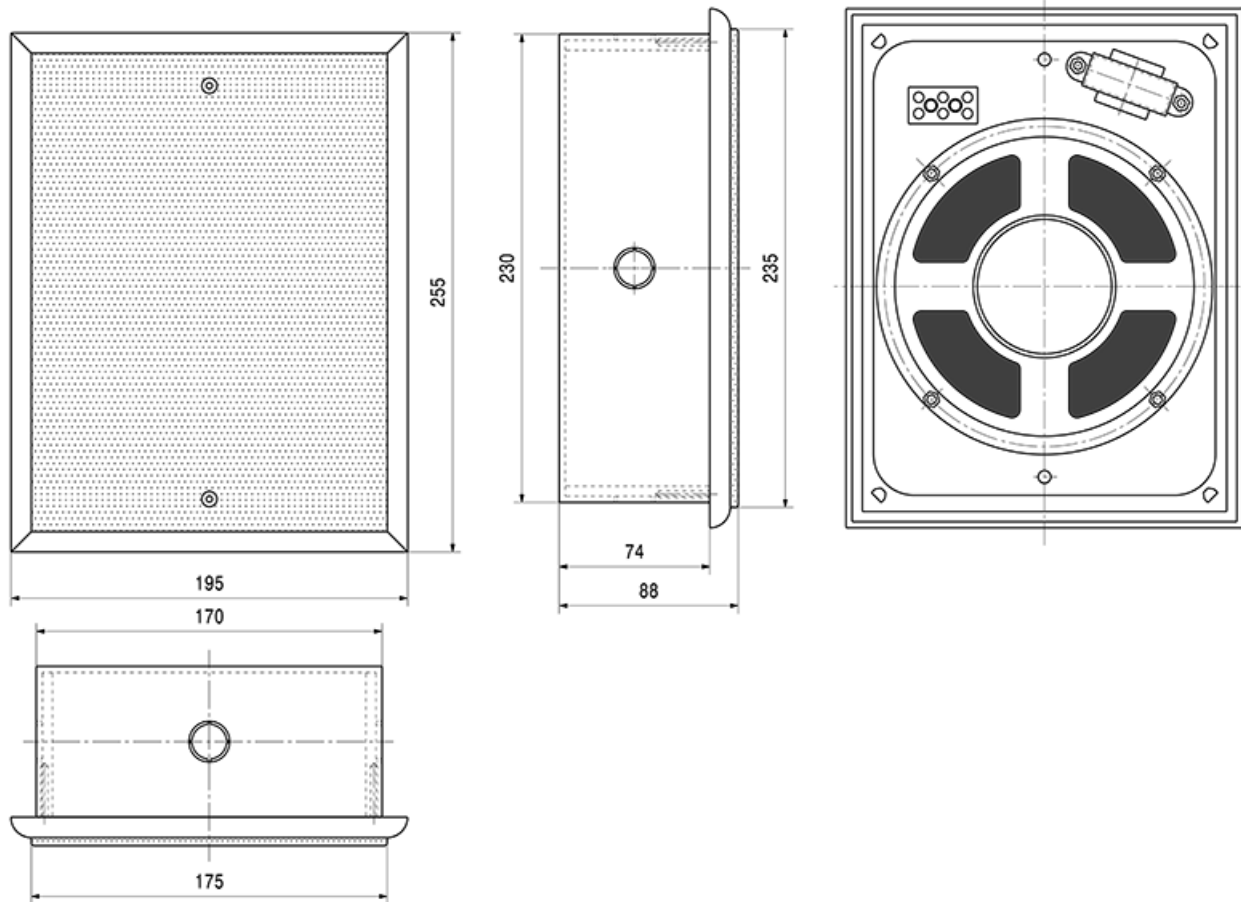
POLAR DIAGRAM



FREQUENCY RESPONSE DIAGRAM



**DIMENSIONAL DIAGRAM**



Measurements according to DIN IEC 268-5

RoHS compliant (2011/65/EU)



This equipment is designed and manufactured to conform to the following EU Directives:

- Electromagnetic Compatibility (EMC): 2014/30/EU
- Low Voltage: 2014/35/EU
- Restriction of Hazardous Substances (RoHS): 2011/65/EU

**Manufacturer**

Application Solutions (Safety and Security) Limited  
 Unit 17 - Cliffe Industrial Estate - Lewes - East Sussex - BN8 6JL - U.K.  
 Tel: +44(0)1273 405411

[www.asl-control.co.uk](http://www.asl-control.co.uk)

All rights reserved.

Information contained in this document is believed to be accurate, however no representation or warranty is given and Application Solutions (Safety and Security) Limited assumes no liability with respect to the accuracy of such information.



Assessed to ISO 9001

LPCB Cert No: C1043