

EN54 WALL / CEILING SPEAKER

- 6W 100V LOUDSPEAKER
- SIZE 6.5" (165MM)
- SURFACE MOUNT
- VANDAL-RESISTANT
- EXCELLENT SOUND QUALITY
- FULLY CERTIFIED TO EN54-24



OVERVIEW

The SPRS-S-06W-65-EN54 is a 6W 100V surface mount loudspeaker which has a 6.5" (165mm) full-range chassis providing excellent sound quality with speech and background music, and which is certified to EN54-24. The speaker is fitted with a 100V transformer which has three power adjustment tapings of 6W, 3W and 1.5W.

The SPRS-S-06W-65-EN54 has a rectangular powder coated metal chassis and grille, with the high quality powder coated finish giving good long-term protection and resistance to corrosion. The enclosure is ingress protection rated to IP21C and is coloured to match RAL9010 'Pure White'.

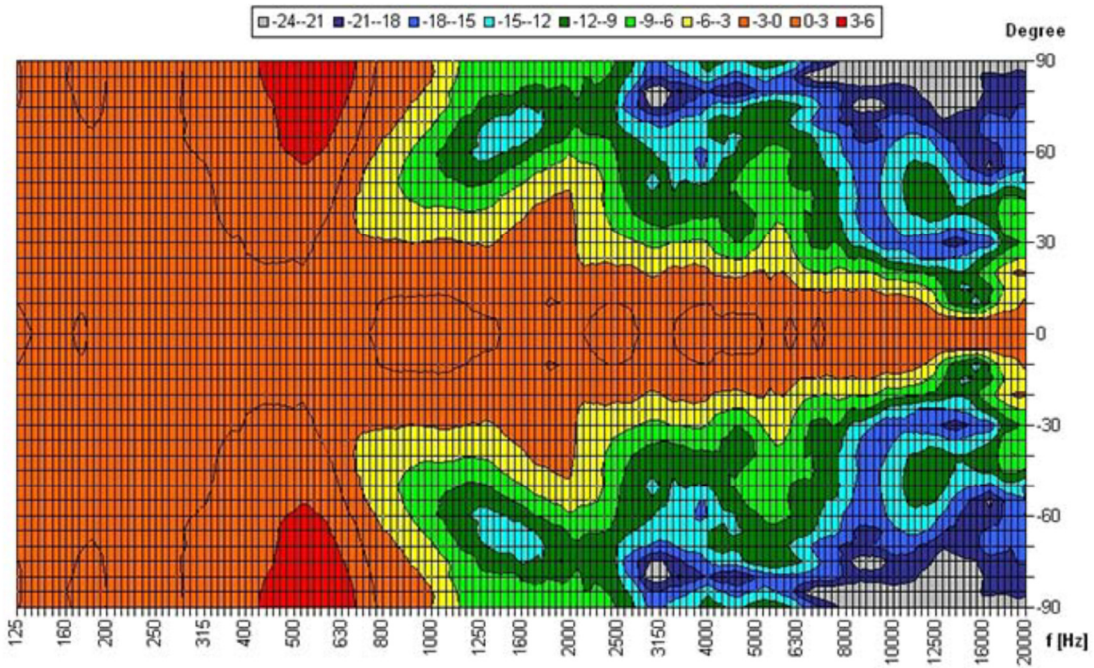
Surface mounting to a wall or ceiling is simply provided through the use of fixing screws, with the enclosure front attaching to the rear mounting panel with three screws. The 100V loudspeaker line cabling is connected by means of a two-pin ceramic block, and for additional reliability a thermal fuse is provided and the speaker chassis is damp-resistant.

This loudspeaker is optionally available with a DC blocking capacitor fitted, in order to provide compatibility with DC loudspeaker line monitoring systems. The part number for this DC monitoring compatible version is SPRS-06W-65-EN54-DC.

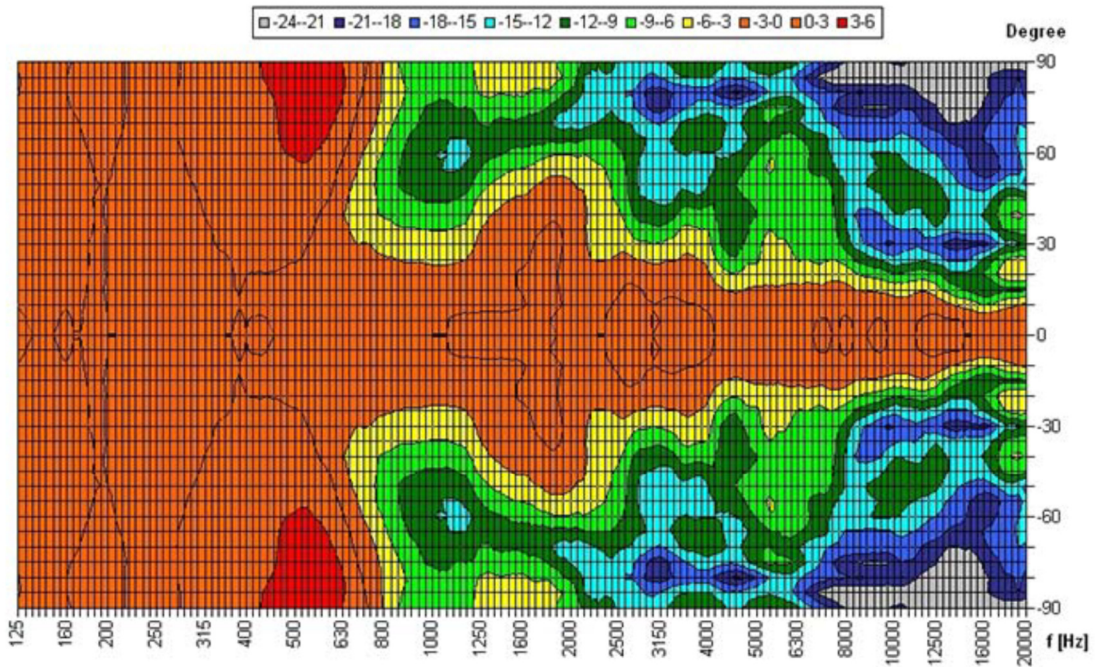
EASE data is available for this speaker on request.

TECHNICAL DATA

Power Tappings	6W / 3W / 1.5W
Frequency Range	170 — 18,500 Hz
Frequency Response	70 — 23,500 Hz
SPL 1W / 1m, peak	98.3 dB
SPL , 1W / 4m, peak	86.3 dB
SPL Pmax / 4m, peak	94.0 dB
Sensitivity EN54-24, 1W / 4m	79.6 dB
Dispersion (-6dB, 500Hz)	180° (horizontal) / 180° (vertical)
Dispersion (-6dB, 1KHz)	84° (horizontal) / 69° (vertical)
Dispersion (-6dB, 2KHz)	119° (horizontal) / 119° (vertical)
Dispersion (-6dB, 4KHz)	62° (horizontal) / 79° (vertical)
Temperature range	-20 / +80 °C
Dimensions	253 x 193 x 81.5 mm
Weight (net)	1.90 kg
Colour	RAL9010 'Pure White'
Connector	2-pin ceramic block
Mounting	Screws

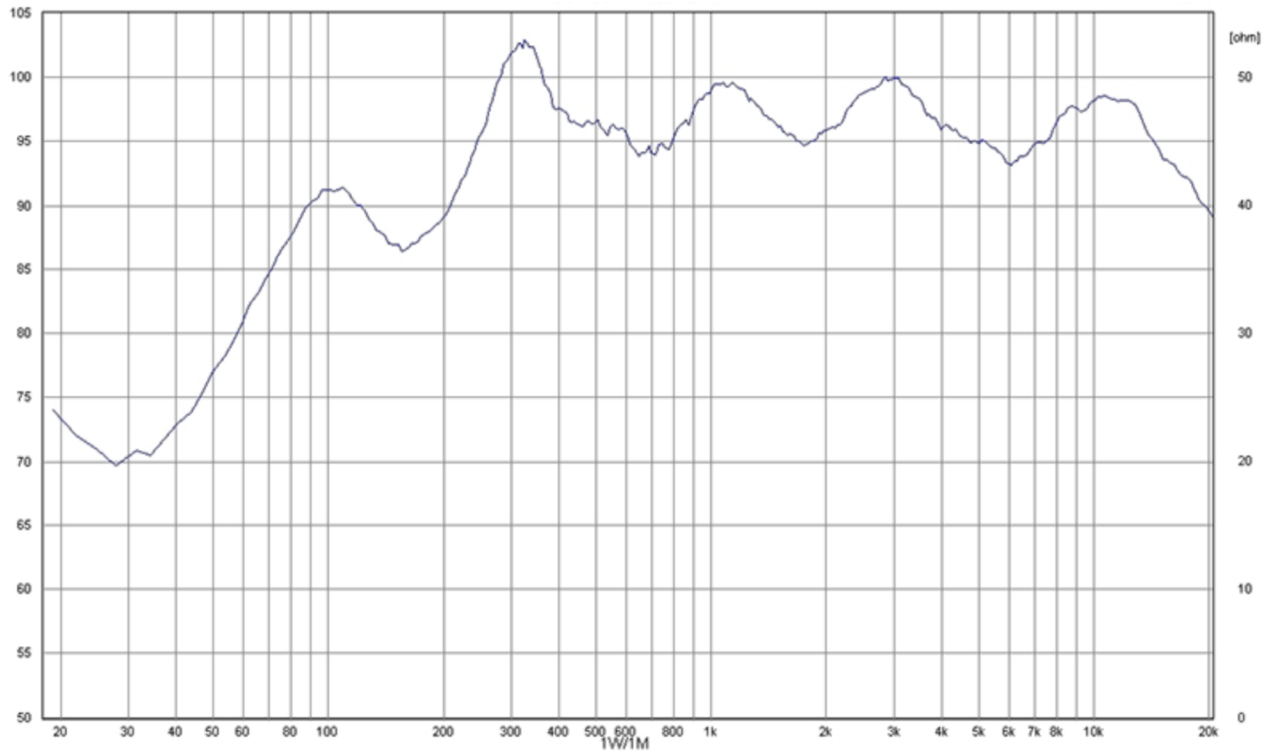
POLAR DIAGRAM


Parameters: Cyclic Move: 0° ; Symmetry: 0..+180 sym ; Freq.Smooth: 1/3 Oct ; Ang.Resol: 5° ; Rel. to: 0° Axis 0°

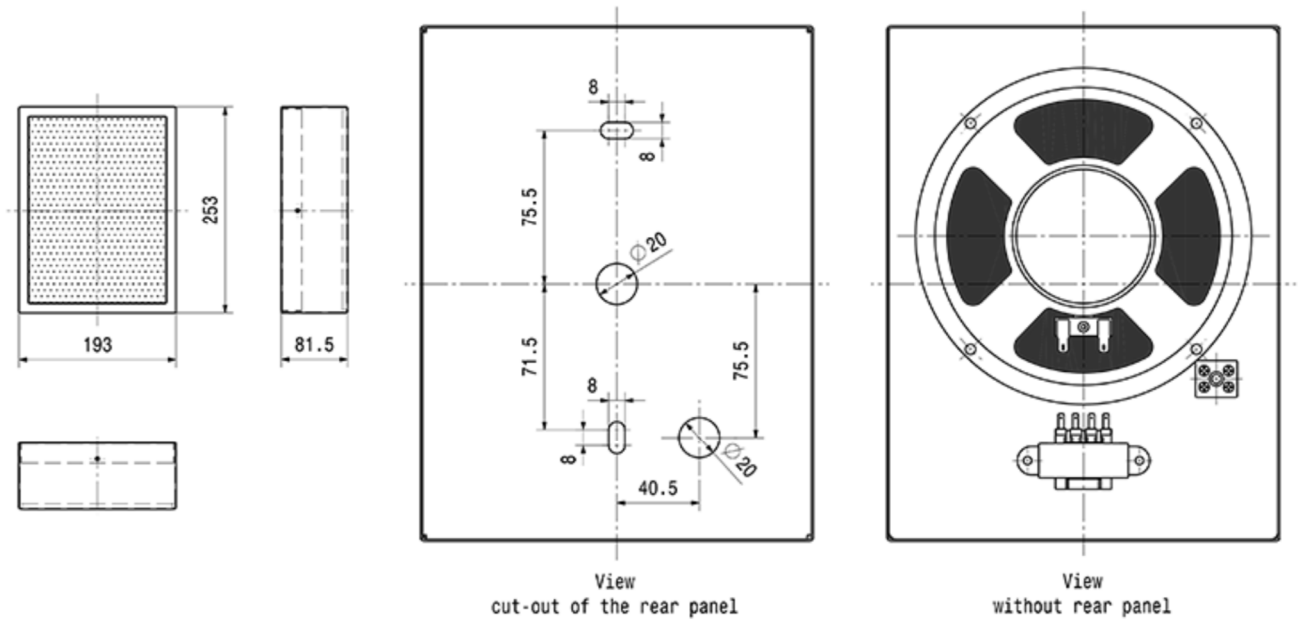


Parameters: Cyclic Move: 0° ; Symmetry: 0..+180 sym ; Freq.Smooth: 1/3 Oct ; Ang.Resol: 5° ; Rel. to: 0° Axis 0°

FREQUENCY RESPONSE DIAGRAM



DIMENSIONAL DIAGRAM



Measurements according to DIN IEC 268-5

RoHS complaint (2011/65/EU)

Made for:

Application Solutions (Safety and Security) Limited
 Unit 17 - Cliffe Industrial Estate - Lewes - East Sussex - BN8 6JL - U.K.
 Tel: +44(0)1273 405411
www.asl-control.co.uk



Assessed to ISO 9001

All rights reserved.

Information contained in this document is believed to be accurate, however no representation or warranty is given and Application Solutions (Safety and Security) Limited assumes no liability with