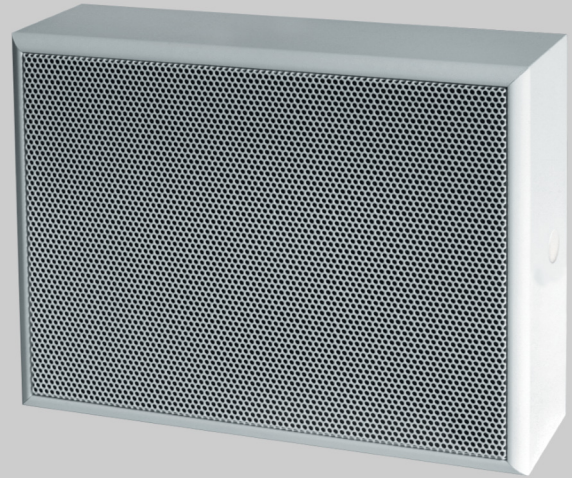


EN54 WALL / CEILING SPEAKER

- 6W 100V LOUDSPEAKER
- SIZE 6.5" (165MM)
- SURFACE MOUNT
- SOFTLINE DESIGN
- EXCELLENT SOUND QUALITY
- FULLY CERTIFIED TO EN54-24



OVERVIEW

The SPRS-W-06W-65-EN54 is a 6W 100V surface mount loudspeaker which has a 6.5" (165mm) full-range chassis providing excellent sound quality with speech and background music, and which is certified to EN54-24. The speaker is fitted with a 100V transformer which has three power adjustment tapings of 6W, 3W and 1.5W.

The SPRS-W-06W-65-EN54 has a high-density shock-resistant MDF wood housing which provides a low-resonance sound. The enclosure is ingress protection rated to IP54, and is coloured white.

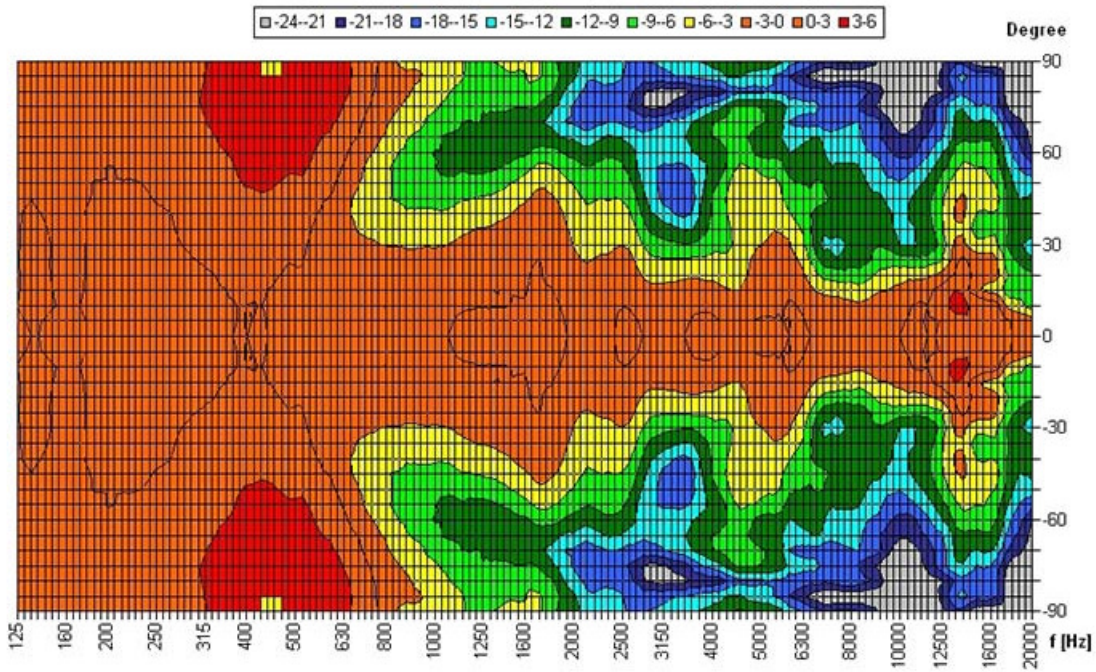
Surface mounting to a wall or ceiling is simply provided through the use of fixing screws, with the enclosure front attaching to the rear mounting panel with spring clips. The 100V loudspeaker line cabling is connected by means of a two-pin ceramic block, and for additional reliability a thermal fuse is provided and the speaker chassis is damp-resistant.

EASE data is available for this speaker on request.

TECHNICAL DATA

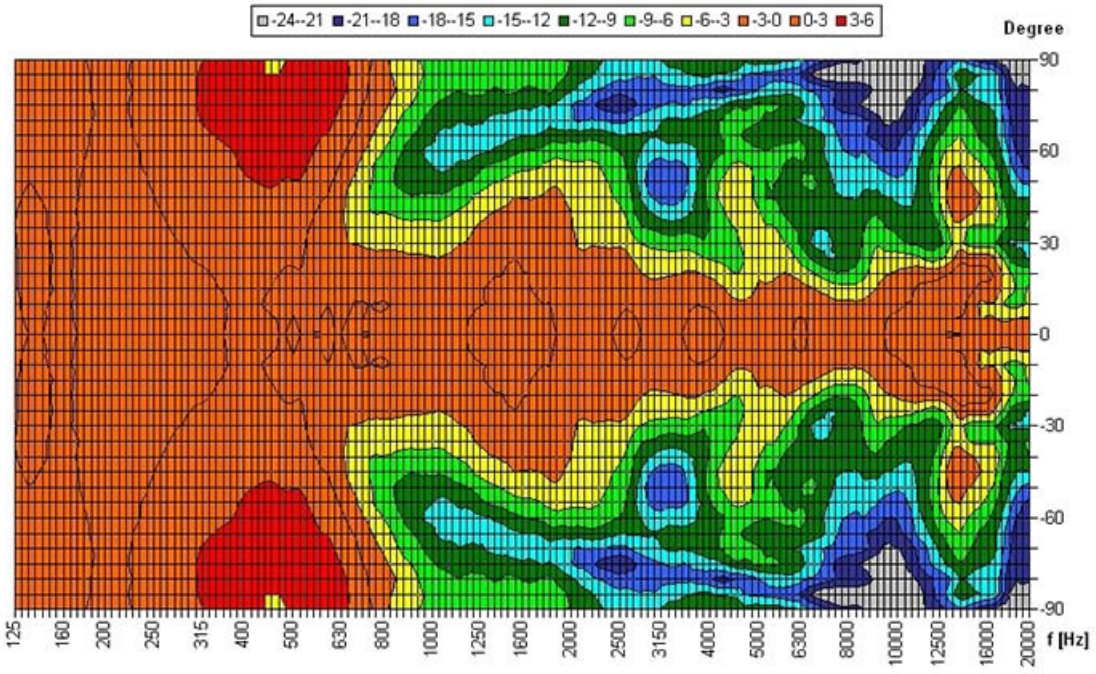
Power Tappings	6W / 3W / 1.5W
Frequency Range	197 — 21,900 Hz
Frequency Response	175 — 23,500 Hz
SPL 1W / 1m, peak	100.6 dB
SPL 1W / 4m, peak	88.6 dB
SPL Pmax / 4m, peak	96.3 dB
Sensitivity EN54-24, 1W / 4m	79.5 dB
Dispersion (-6dB, 500Hz)	180° (horizontal) / 180° (vertical)
Dispersion (-6dB, 1KHz)	83° (horizontal) / 74° (vertical)
Dispersion (-6dB, 2KHz)	100° (horizontal) / 115° (vertical)
Dispersion (-6dB, 4KHz)	55° (horizontal) / 53° (vertical)
Temperature range	-20 / +80 °C
Dimensions	252 x 192 x 82 mm
Weight (net)	1.99 kg
Colour	White
Connector	2-pin ceramic block
Mounting	Spring clamp
Maximum cable cross section	8mm ²
Maximum cable cross section loop	2 x 2mm ²
IP Rating	IP54
Packing Unit	8

POLAR DIAGRAM



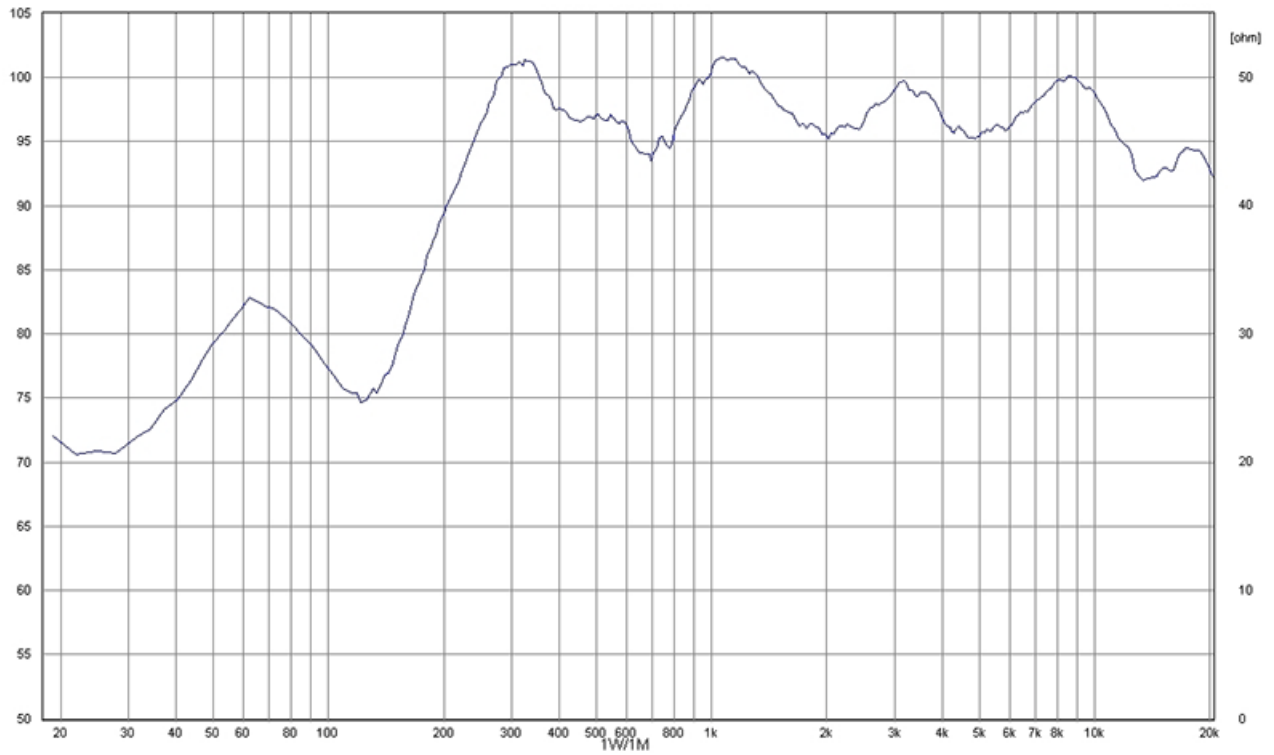
Parameters: Cyclic Move: 0° ; Symmetry: 0..+180 sym ; Freq.Smooth: 1/3 Oct ; Ang.Resol.: 5° ; Rel. to: 0° Axis 0°

Vertical Isobars

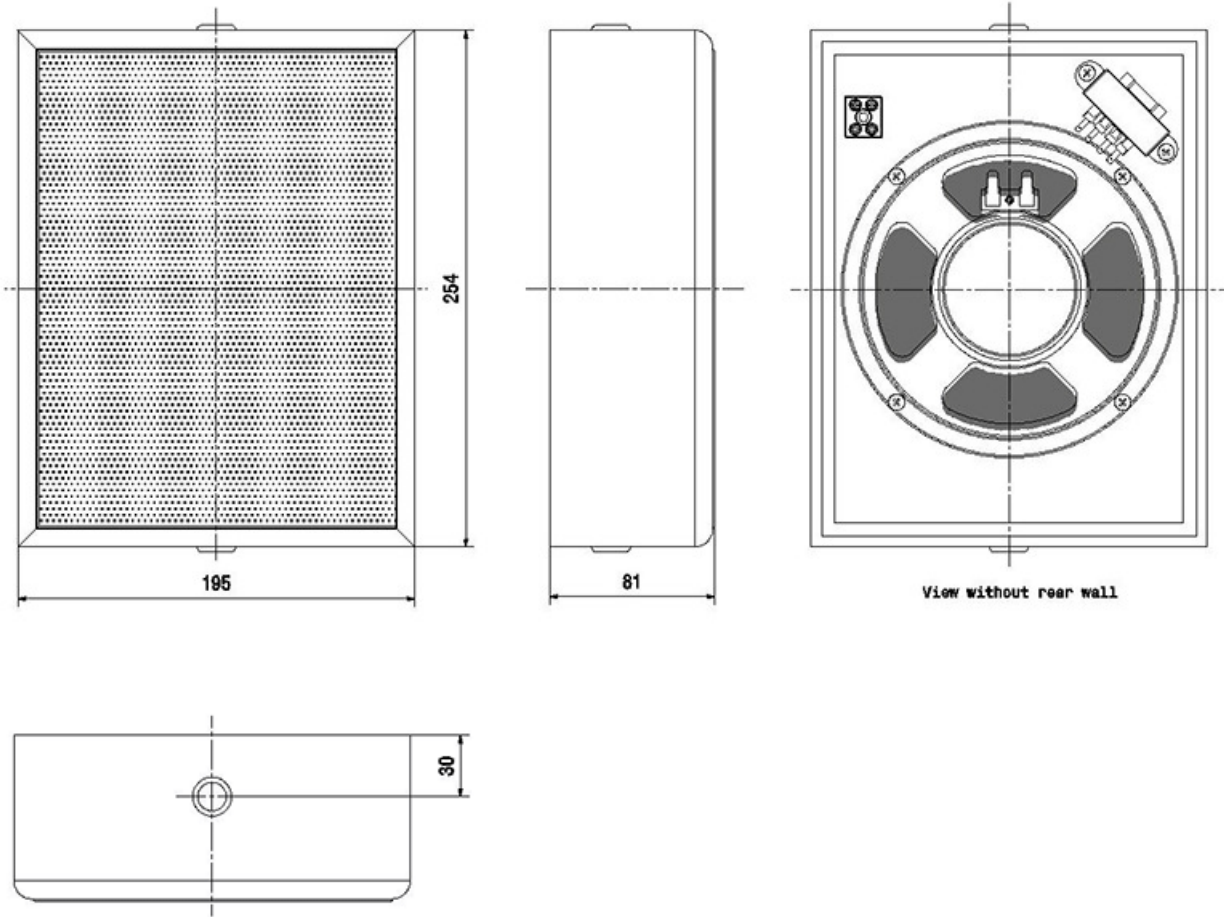


Parameters: Cyclic Move: 0° ; Symmetry: 0..+180 sym ; Freq.Smooth: 1/3 Oct ; Ang.Resol.: 5° ; Rel. to: 0° Axis 0°

FREQUENCY RESPONSE DIAGRAM



DIMENSIONAL DIAGRAM



Measurements according to DIN IEC 268-5

RoHS complaint (2011/65/EU)

Made for:

Application Solutions (Safety and Security) Limited
 Unit 17 - Cliffe Industrial Estate - Lewes - East Sussex - BN8 6JL - U.K.
 Tel: +44(0)1273 405411

www.asl-control.co.uk



Assessed to ISO 9001
LPCB Cert No: C1043

All rights reserved.

Information contained in this document is believed to be accurate, however no representation or warranty is given and Application Solutions (Safety and Security) Limited assumes no liability with respect to the accuracy of such information.