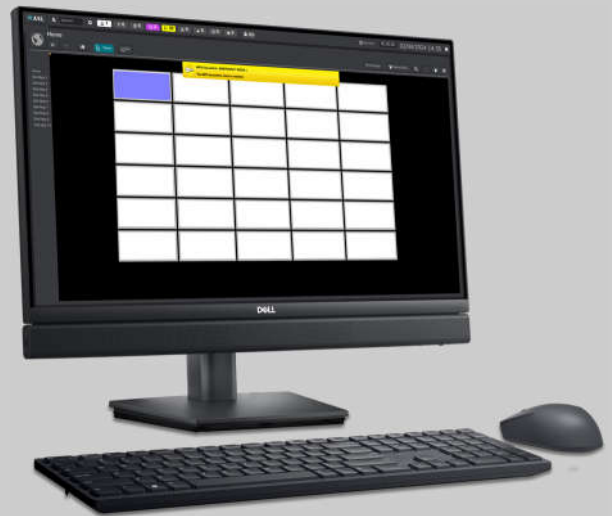


# PUBLIC ADDRESS TOUCHSCREEN WORKSTATION

- VERSATILE AND INTUITIVE PUBLIC ADDRESS CONTROL AND SUPERVISION FRONT END
- SUPPORTS UP TO 384 PAVA ZONES
- LIVE PAGING
- PAVA SYSTEM AUDIO MONITORING AND SUPERVISION
- MESSAGE MANAGEMENT, RECORDING, PLAYBACK AND SCHEDULING
- CUSTOMISABLE PA ZONE BUTTONS OR GRAPHICAL GUI



## OVERVIEW

ASL's VIPA-WS is a Linux-based touch screen workstation which provides a versatile and intuitive Graphical User Interface (GUI) for ASL Public Address systems. The workstation GUI is tailored for non-emergency control and monitoring of ASL's PA equipment. Its touch screen-friendly navigational structure and expansive target areas provide simple operation, whether each user prefers to operate the system with a mouse or their hands. The utilization of standard IP networking to connect to the IP enabled ASL PA equipment streamlines deployment in the field.

### Versatile Applications

Designed with diverse audiences in mind—integrators, maintainers, or operators—the VIPA-WS addresses their specific needs, values, and capabilities. It serves as an optimal choice for delivering flexible live paging and prerecorded message playback in simple installations. Simultaneously, its advanced feature set renders it equally suitable for complex applications necessitating message automation or detailed PAVA system supervision.

### Scalability

Sold as a pre-configured software and hardware combo, the VIPA-WS empowers control and monitoring of up to 384 zones, and multiple VIPA-WS units can be used with a single PAVA System. For large Multi Cluster Voice Alarm Public Address systems which exceed 384 zones or require enhanced capabilities, please contact Zenitel.

### Live Paging Capabilities

The VIPA-WS facilitates zone selection when employed alongside an ASL MPS desk microphone, empowering users to designate PA zones for live speech broadcast via the touchscreen. Furthermore, the Press To Talk (PTT) Speak Now button is provided on both the graphic display and on the microphone itself.

### Stored Audio Messages

The VIPA-WS enables the users to broadcast stored audio messages whenever required. The users can record and manage their own messages, as well as having a store for permanently saved standard message recordings. Stored messages can be included in schedules which automatically broadcast them into any selected PA zone or zones on a daily, weekly, or monthly time schedule. Broadcast schedules can be easily created and managed by the users, and can be turned on or off as required. The system shows a list of the automated broadcasts that will be made in the next hour to help the users stay in control of their announcements.

### Clear PAVA System Status, alarms, and Event Logging

The GUI's PA zone buttons clearly show the broadcast state of their associated amplifiers by showing different button colours for different types of broadcast, for instance, highlighting a zone button in red if there is an Emergency microphone broadcast happening in that zone, and showing Green for live speech announcements from the workstation itself. The VIPA-WS knows about all the devices in your ASL PAVA System, and also provides detailed fault monitoring, showing you in plain English if anything needs attention. For reference, the system keeps logs of its PA broadcasts and of the history of all of the alarms on the PA system.

### Customization Options

The built-in GUI editor can be used to fine-tune the basic PA zone button matrix to operate your own choice of one or more GUI graphic images, ensuring that even the largest systems are easily navigable and meaningful. This includes the ability to import your custom graphics, to map your PA zone button areas, and to use multiple background graphic images to the zone selection buttons.

## KEY FUNCTIONALITY

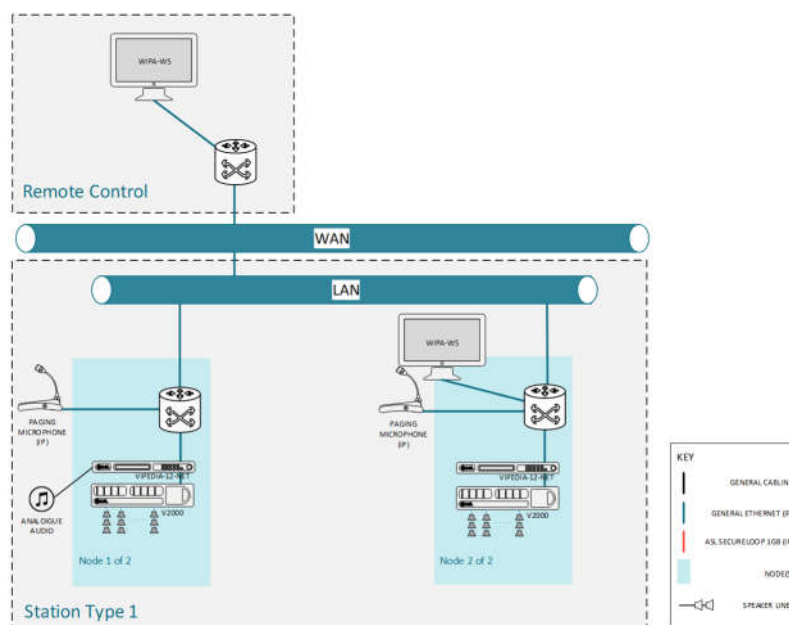
The VIPA-WS offers various features and functionality, providing the perfect value combination for your installation needs. These are detailed below

Feature / Function	Supported
One off License	USB dongle protected, supplied along with the hardware
Configuration	Configured by Zenitel to your agreed requirements before shipping
Display PAVA Alarm Status	Yes. Both as a prioritised filterable alarm list and status tree format, with an alarm summary and operators and maintainers information provided for every alarm.
Button Zones (Status and selection)	Yes. Broadcasting source priority denoted by zone colour.
Graphical GUI Images	Yes. The GUI graphics can be customized by Zenitel using customer-supplied .png image files.
Audio Monitoring	Yes. Listen into broadcasts being made in any PA zone.
Live Paging	Yes. Using an associated MPS Microphone.
Pre-recorded Message Management	Yes. Your standard messages can be pre-loaded by Zenitel.
Message Recording	Yes with the MPS Microphone
Pre-recorded Message Scheduler	Yes.
User Accounts	Yes. The default user roles include: Operator, Administrator, and Maintainer.

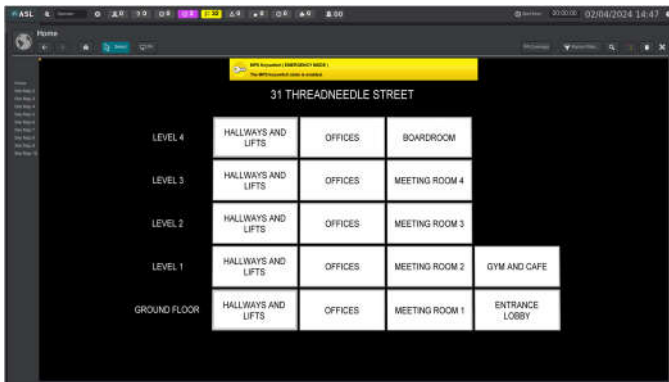
## SYSTEM ARCHITECTURE AND NETWORKING

Implemented as a separate layer of functionality independent of the core Voice Alarm capabilities of the PAVA System, the VIPA-WS ensures that entertainment features remain distinct while safeguarding the integrity of emergency functions. This approach offers users flexibility and control, providing reassurance that the emergency functions of the Voice Alarm system remain intact.

The PA equipment receives live voice audio streaming via the IP network, utilizing standard IPV4 UDP multicast with IGMPv3. Multicast transmissions enable multiple PA units to receive a single stream of data, reducing the required network transmission bandwidth. The quality of the streamed audio depends on the quality of the network communications.



EXAMPLE GUI



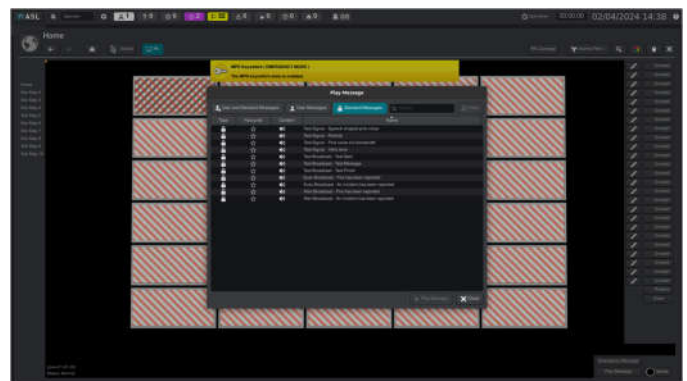
Example PA zone selection button matrix

**Customisable GUI**

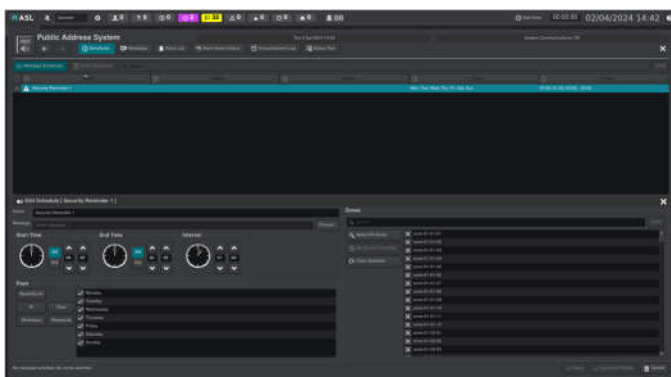
To ensure even the largest systems are recognisable, meaningful and easy to navigate, the editing suite allows Zenitel to tailor the basic button matrix to your requirements with the use of custom graphics in one or more GUI screens. For example, a stadium might have a top-level screen for simple grouped paging, with drill downs to additional screens offering selection of individual subzones for PA broadcast.

**Message Management**

Non-emergency messages are there for you to play. Simply select your zone(s), then select the required message from the message list. "Favourite" your frequently-used messages for even quicker access. You don't even have to wait between messages: The VIPA-WS works with your ASL System to intelligently queue playback. New audio messages can be recorded by the user, and routine operational and security messages can be scheduled to be automatically broadcast at set intervals.



Example PA Message Manager Window



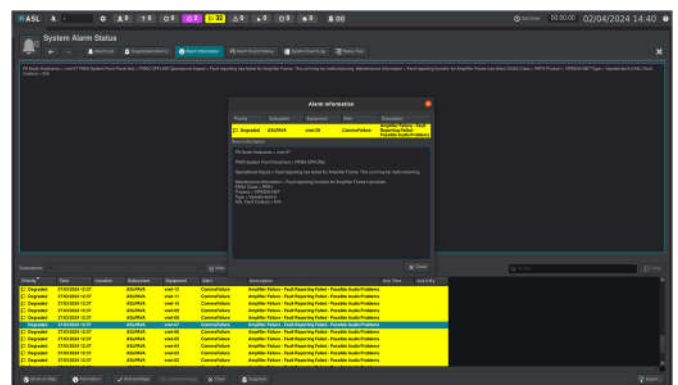
Example PA Scheduler Window

**Message Scheduler**

Designed to be easy and intuitive to use, the powerful scheduler allows message playback to operate automatically throughout the day. Schedules can run daily, or be restricted to certain days on a weekly or monthly schedule. The scheduler is great for notifying employees of break times.

**ASL PAVA System Status**

The VIPA-WS provides detailed fault monitoring on all of the devices in your ASL PAVA System, showing you in plain English if anything needs attention.



Example Alarm Log

## SPECIFICATION

### General

Format..... Touchscreen Workstation PC (Integrated Client Server)  
 Hardware Format .....All in one Desk Top  
 Model .....Dell OptiPlex All-in-One\*  
 Screen Size..... 23.8" FHD Touch\*  
 Workstation Speakers ..... Integrated as part of the display\*  
 Mouse and Keyboard ..... Supplied  
 Microphone ..... MPS01-G0-IP Sold Separately  
 Touchscreen Enabled ..... Yes  
 Operating System ..... Ubuntu Linux  
 Maximum Number of PAVA Zones ..... 384  
 Pre-configured User Accounts ..... 3

### Power Supply

Input Voltage ..... 100-240 V AC  
 Mains Plug ..... UK

### Connectivity

Ethernet Ports ..... 1x 100BASE-T  
 Audio and Control Protocol ..... PMC (48 kHz, 16 bit) & VIPA  
 NTP Server ..... Uses an External NTP Time Source  
 Protocols ..... UDP IP / Layer 2+3 / Multicast / Unicast

### GUI

Format..... Buttons or with user provided graphics  
 User Provided Graphic File Format..... PNG  
 User Provided Graphic File Size .....  
 ..... 1796 pixels wide x 875 pixels high

### Pre-Recorded Messages

Maximum Message Length ..... 60 seconds  
 Message format ..... WAV  
 Sample Rate ..... 48 kHz  
 Bit Depth ..... 16 Bit  
 Maximum Record Length ..... 60 seconds

### Mechanical

Refer to the PC manufacturer's datasheet \*

### Environmental

Refer to the PC manufacturer's datasheet \*

### Configuration and Software

Configuration .....  
 ..... Configured to your agreed requirements before shipping  
 Protection ..... USB Dongle protected  
 Software Package ..... V2≥

\*The hardware may be subject to change without notification due to obsolescence issues beyond our control. However, we will ensure that minimum functionality is maintained. PC Manufacturer's datasheet available on request at the time of order

## PRODUCT PART CODES

VIPA-WS ..... Public Address Touchscreen Workstation | Supporting up to 384 zones | Includes hardware, software and configuration  
 VIPA-WSCOM ..... Public Address Touchscreen Workstation | Supporting over 384 zones Includes hardware, software and configuration

## COMPATIBLE HARDWARE

VIPEDIA-12-NET / VIPEDIA-12-PRO ..... DSP Audio Controller / Router  
 INTEGRA / INTEGRA-PRO Ranges ..... Integrated Wall Mount PAVA System  
 MPS-IP Range ..... MPS Range of IP enabled microphones



### Supplier:

Zenitel GB Limited  
 Unit 17 Cliffe Industrial Estate  
 Lewes  
 East Sussex  
 BN8 6JL  
 UK

Tel: +44(0)1273 405411  
[www.zenitel.com](http://www.zenitel.com)